

Good Option for Sharing Maps

PDF format now supports layers

Export a map as a PDF in ArcGIS 9.2 and anyone using Adobe Acrobat Reader version 6 or higher will be able to view map layers and turn them on and off. PDFs are useful for distributing maps because this format was designed to be consistently viewable and printable across different platforms. Not only are PDFs commonly used for distributing documents on the Web but increasingly have become a standard interchange format for high-end printing. ArcMap PDFs are editable in many graphics applications and retain annotation, labeling, and most map layers from the map document's table of contents.

However, the layers ArcMap outputs in the PDF may not exactly match the map document's layers because of differences in the way some map elements are interpreted. Elements such as map annotation classes, neatlines, graphics, and other marginalia that are not contained in an ArcMap layer will appear as a separate layer called Other in the resulting PDF. Any graphic or text element added to the Data Frame's default graphics layer from the Data view will be placed in a layer called <Default>. The contents of multiple annotation groups in the Data view become a separate layer above

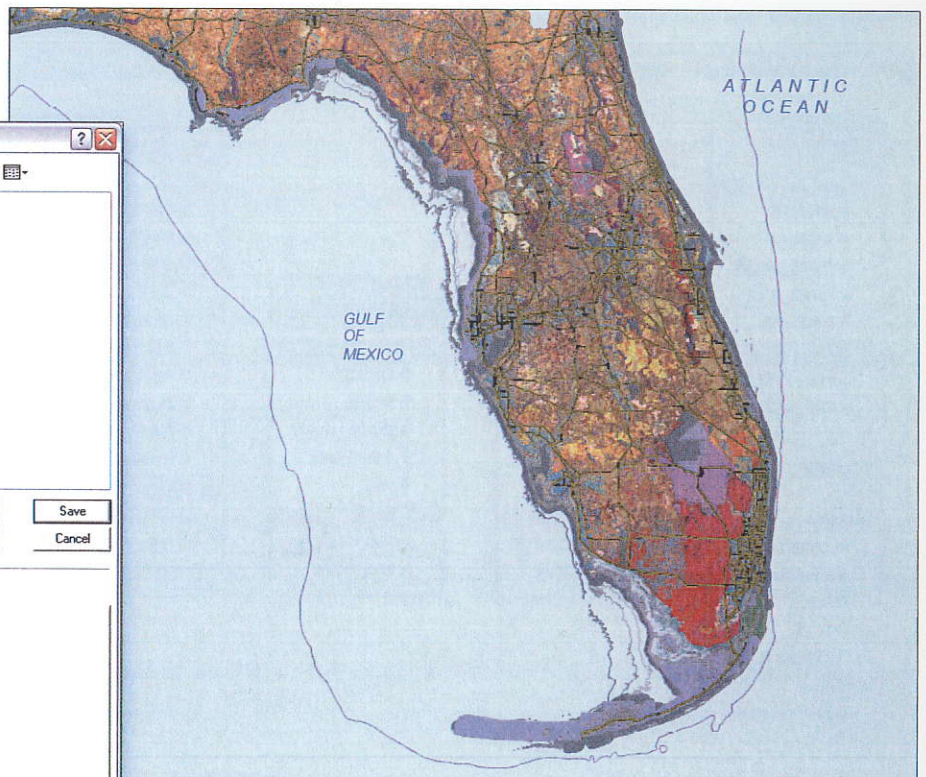
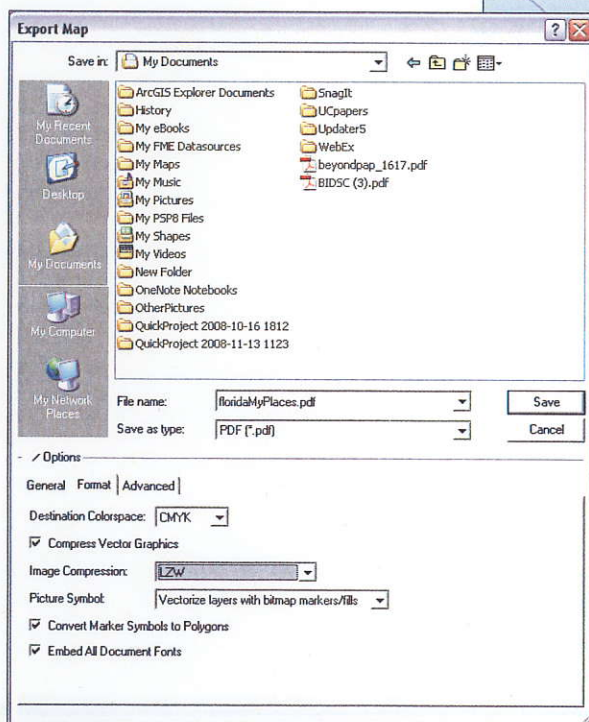
the <Default> layer. (To determine if a map document has annotation groups, choose Drawing > Active Annotation Target from the Drawing toolbar.)

Some layers and elements may also be consolidated. Group layers are consolidated into a single layer. Raster layers, such as orthophotos, consolidate all layers below them into a single image layer. A single bitmap element, such as a logo, will also trigger this effect so transparency or bitmap picture fill symbols, marker symbols, or line symbols should not be used. Replace bitmap elements with vector-only EMF picture fill symbols or with font character-based symbols, or use the Vectorize Layers with Bitmap Markers/Fills option in the Export Map dialog box. A Developer Sample called Detect Complex Output, available at no cost from the EDN Code Exchange, provides a toolbar with two commands that can identify problematic map content including raster elements.

The procedure for exporting a map document

as a PDF with layers is straightforward. Follow these steps:

1. After compiling and laying out a map, make all layers visible that should be included in the resulting map.
 2. Choose File > Export Map from the Standard menu. In the Export Map dialog box, click the General tab and adjust the Output Image Quality if necessary.
 3. Click the Format tab and choose the appropriate Destination Colorspace. Use RGB for files that will be viewed online and CMYK for files that will be printed.
 4. Check Compress Vector Graphics and choose a type of Image Compression.
 5. For Picture Symbol, choose the Vectorize Layers with the Bitmap Markers/Fills option.
 6. Check both Convert Marker Symbols to Polygons and Embed All Document Fonts.
- Fonts should always be embedded in a PDF so map viewers can view the map with the correct fonts.



Use the Export Map dialog box to set compression, color space, and other parameters when exporting an ArcMap document to PDF.