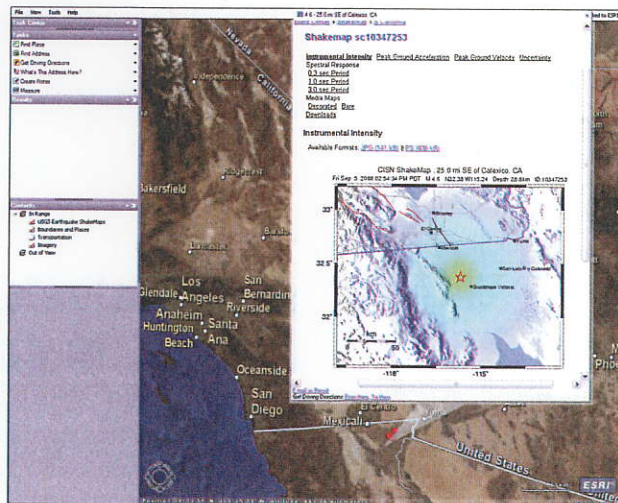


# Timely Geographic Information

## Add a GeoRSS feed to ArcGIS Explorer



View GeoRSS feeds, such as the U.S. Geological Survey Shakemaps feed, in ArcGIS Explorer.

View breaking news, shaking events, or the latest photographs posted on the Internet in a geographic context using ArcGIS Explorer with a GeoRSS feed.

### What is GeoRSS

GeoRSS is RSS with “a-where-ness” (or a spatial component). You might be more familiar with RSS (Really Simple Syndication or Rich Site Summary), a method for automatically publishing information delivered as XML and rendered by aggregators or Web browsers. It is a common way to publish the latest blog entries.

GeoRSS adds location content for geographic points, lines, and polygons and related feature descriptions to an RSS feed. To use GeoRSS, in addition to a provider of a GeoRSS feed, you need a client. ArcGIS Explorer—ESRI’s free application for accessing Web services, performing GIS tasks, and integrating data—can connect to and use GeoRSS feeds. GeoRSS feed is supported in ArcGIS Explorer version 480 and beyond.

At present, ArcGIS Explorer supports only point geometries from the RSS 2.0 and Atom 1.0 feed types in W3C Geo, GeoRSS-Simple, and GML formats. ArcGIS Explorer displays the elements of the feed on the map as results after you set the interval at which the application should check for updates to content and position. The minimum interval time for refreshing GeoRSS feeds is 10 minutes.

### Adding the USGS Feed

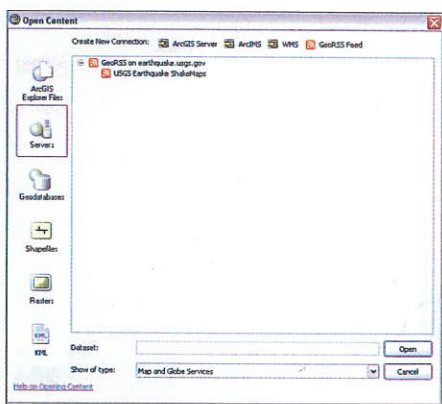
Adding a GeoRSS feed to ArcGIS Explorer is simple. The following three steps will add a GeoRSS feed from the U.S. Geological Survey, the USGS Earthquake Shakemap site. This feed links to maps showing ground motion and shaking intensity in near real time for significant earthquakes. It is produced through the U.S. Geological Survey Earthquake Hazards Program in conjunction with regional seismic network operators.

1. Launch ArcGIS Explorer. Choose File > Open. Click Servers in the sidebar. Click GeoRSS Feed from the choices at the top of the frame.
2. In the Add New Server Connection dialog box, type [earthquake.usgs.gov/shakemap/rss.xml](http://earthquake.usgs.gov/shakemap/rss.xml) under GeoRSS Feed. Click OK.
3. The next five windows set parameters for how the feed information will be presented. You can set feature type (3D or draped), set scale dependency, select a symbol, set caching options, and control the amount and type of information displayed in the pop-up.

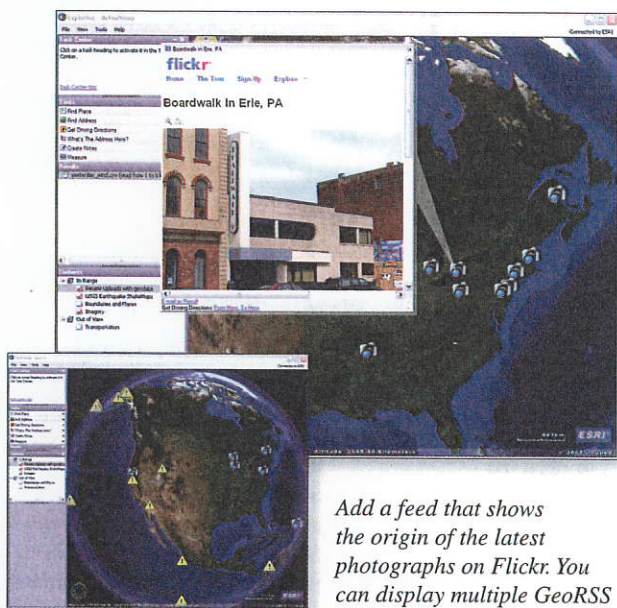
You can also add a feed that shows the origin of the latest photographs that have been added to Flickr just as easily. Flickr is an online service for storing, sorting, searching, and sharing photographs. Use the same procedure and the URL [api.flickr.com/services/feeds/geo/](http://api.flickr.com/services/feeds/geo/). You can display multiple GeoRSS feeds in a single ArcGIS Explorer document (NMF file).

### Conclusion

GeoRSS is a useful way to access frequently changing data using a geographic framework that can be integrated with local data or other Web services.



To add a GeoRSS feed, start ArcGIS Explorer and choose File > Open. Click Servers in the sidebar. Click GeoRSS Feed and type in the feed URL.



Add a feed that shows the origin of the latest photographs on Flickr. You can display multiple GeoRSS feeds in a single ArcGIS Explorer document.