

Try These Operations in ArcGIS® 9.3

ArcGIS Desktop

Add useful online content to your maps.

1. In ArcMap™, open one of your existing maps or choose File > New and choose one of the USA or world maps.
2. Choose File > Add Data from Resource Center. This launches the Online Layers page in the new ArcGIS Desktop Resource Center.
3. Click the layer you want to add to your map.

The layer will automatically be added to your map. Some of these layers, such as World Imagery and World Street Map, are services from ArcGIS™ Online. Others reference services being served by government and educational institutions.

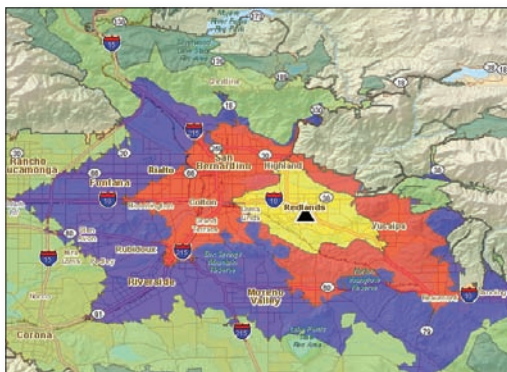
Requires ArcView®, ArcEditor™, or ArcInfo®

Create new data layers from graphics you draw on your maps.

1. Use one of the drawing tools on the ArcMap Draw toolbar to draw some graphics on your map. For example, use the Polygon tool to draw two polygons.
2. (Optional step) Give each polygon a name by double-clicking each one with the Select Elements (black pointer) tool, going to the Size and Position tab on the Properties dialog box that appears and entering a name such as Study Area 1 or Study Area 2 in the Element Name field.
3. Select both polygons by dragging over them with the Select Elements tool.
4. Choose the new Convert Graphics To Features command from the Drawing pull-down menu on the Draw toolbar. On the dialog box that appears, check the option to delete the graphics after conversion. Click OK, then click Yes when you are prompted to add the layer to the map.

You'll see a new polygon layer appear in your map containing two features. If you identify these features, turn labeling on, or open the attribute table for the layer, you'll see that the names you specified in step 2 are in the Name field for the polygons.

Requires ArcView®, ArcEditor™, or ArcInfo®



Sort tables on multiple fields.

1. In your map, right-click any feature layer in the table of contents and choose Open Attribute Table.
2. In the table window that appears, right-click any field and choose Advanced Sorting.

This dialog box lets you sort your table using up to four fields. At 9.3, sorting is also persisted in the table window, so you can sort a table any way you choose and it will stay that way.

Requires ArcView®, ArcEditor™, or ArcInfo®

Perform reverse geocoding.

1. Add a Streets layer to your map (such as the StreetMap™ North America layer) and zoom to a small scale (e.g., 1:2,400, 1:4,800).
2. Turn on the new Geocoding toolbar.
3. Add an address locator using the Address Manager (such as the Street_Addresses_US locator).
4. Click the Address Inspector tool.
5. Click on the map and hold down the left mouse button to have ArcMap dynamically reverse geocode the location you clicked.
6. (Optional step) While performing a reverse geocode with the Address Inspector tool, use a shortcut key to add a graphic or label for the address (P=Add Point, L=Add Labeled Point, O=Add Callout, K=Copy Text).

Requires ArcView®, ArcEditor™, or ArcInfo®

Access attributes via new HTML pop-ups.

1. In ArcMap, open one of your existing maps or choose File > New and choose one of the USA or world maps.
2. Double-click any layer and go to the new HTML Pop-up tab.
3. Check the box that says Show content for this layer using the HTML Pop-up tool, and click OK.
4. Click the new HTML Pop-up tool on the Tools toolbar.
5. Click one of the features in the layer.

Any HTML links or formatting stored in the attribute table for the layer will be reflected in the pop-ups that appear, enabling you to go beyond a simple table of attributes. HTML pop-ups support XSL templates to allow you to customize how data is displayed in the pop-up window. These pop-ups are also supported in ArcGlobe™. Tip: To prevent features with HTML pop-ups or hyperlinks from changing color when you select those tools, use the setting in the Tools > Options > General tab.

Requires ArcView®, ArcEditor™, or ArcInfo®

Try These Operations in ArcGIS 9.3

ArcGIS Server

Create a Web mapping application consuming an ArcGIS Server service.

1. Open a Web browser and navigate to www.esri.com/javascript.
2. Follow the Getting Started link and select the Adding a map help topic under the Getting Started concept in the TOC.
3. Click the Show Me link at the top of the help topic. A new browser window will open with a JavaScript™ API map.
4. Right-click anywhere on the new Web page (besides the actual map) and select View Source if you are using Internet Explorer® or View Page Source if you are using Firefox®.
5. A new window will open displaying the HTML code for this page.
6. Copy the HTML code into a text file on your computer.
7. Save the file as an HTML file and place it into a Web server. If you do not have a Web server, try uploading this file into any free hosting site such as <http://geocities.yahoo.com>. Simply navigate to your HTML file using a Web browser.

Requires ArcGIS Server Standard Workgroup or Enterprise or higher to publish your own data

ArcGIS Explorer

Add a GeorSS feed and text file.

1. Download and install ArcGIS Explorer from <http://resources.esri.com/arcgisexplorer>.
2. Launch the ArcGIS Explorer application.
To add a GeorSS feed
 - a. Go to File > Open > Servers > GeorSS Feed.
 - b. Add the following feed into the Server Content: <http://earthquake.usgs.gov/eqcenter/shakemap/rss.xml>.
 - c. Click the USGS Earthquake ShakeMaps feed and follow the dialog box to add this feed to ArcGIS Explorer.**To add a text file**
 - a. Visit www.spc.ncep.noaa.gov/climo/reports and download a tornado, hail, or windstorm report in CSV format.
 - b. To open the text file storm report in ArcGIS Explorer, do the following:
 - i. Go to Tools > Import File.
 - ii. Browse to the downloaded text file and click Open.
 - iii. Progress through the dialog boxes and select a symbol. Click Finish.The storm events for the day you selected are now located in ArcGIS Explorer.

Requires ArcGIS Explorer

Additional Resources from ESRI

What's New in ArcGIS: www.esri.com/whatsnew

ArcGIS Desktop Help Online: www.esri.com/webhelp

ArcGIS Resource Center: <http://resources.esri.com>

Training: www.esri.com/training

Books: www.esri.com/esripress

To get a copy of the PowerPoint® presentations you saw today, visit www.esri.com/post93seminar.

