

The FOGIS Group!

Good afternoon, friends and supporters of GIS in Clinton County.

---

***Edition VII of our monthly updates for 2008 on GIS - News and Events from the GIS Office of Clinton County, Ohio...***

---

First, I am pleased to announce that the OGRIP Outreach Meeting held here in Wilmington was a great success, with more than 30 people in attendance. The topic "Bringing Data to the Masses" using Google Earth was met with interest and continues even now, with folks sending me e-mails for clarifications of points and asking for details on particular items. You can find the presentation in a couple of different formats, including PDF, here:

<http://www.clintoncountyohgis.org/publications.htm>

There is a relatively new document format that I've used for the first time here, with an XPS file extension. It is a file format developed by Microsoft, and like PDF it is a fixed-layout document format. Feel free to do some research on your own to see the benefits of XPS files; we will begin using it more and more as time goes on.

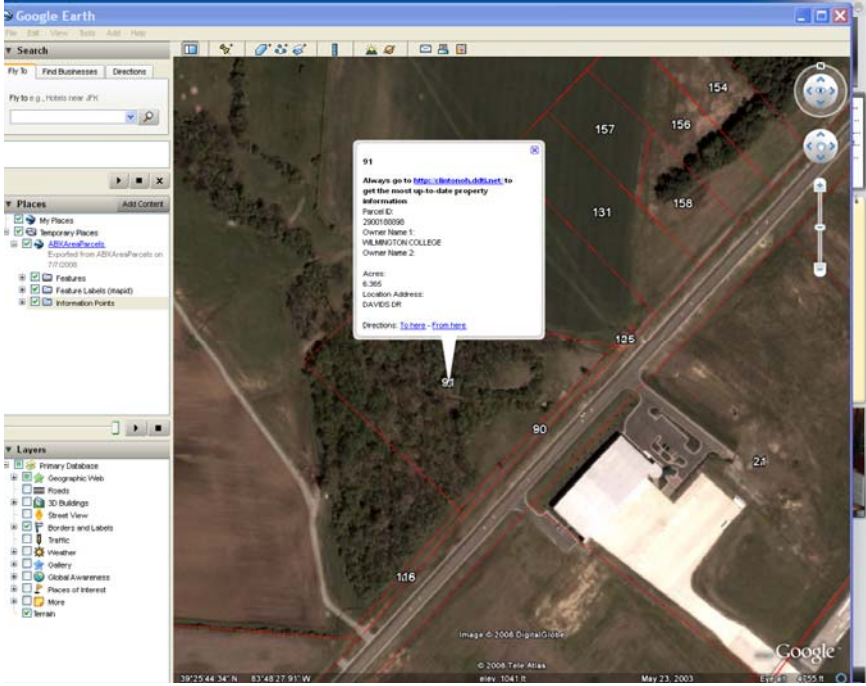
I was invited to speak at the Leadership Clinton Land Use Day on the 17<sup>th</sup>, and will post the power-point presentation on the publications page as seen above. I will be providing an introduction to GIS and a little about using applications such as ArcReader & Google Earth, so stay tuned!!

---

We've continued making available scanned images of maps on our web page. The latest round of updates includes many maps on the Airpark and surrounding area.

[http://www.clintoncountyohgis.org/historical\\_airpark.htm](http://www.clintoncountyohgis.org/historical_airpark.htm)

As you can see, we have maps that date all the way back to 1958 showing Airpark features when it was an Air Force base. For 2008, I have a screenshot of a map of the Airpark and surrounding area showing *mapid* that you can look up on the *Airpark Area Property Information* Table. There is also a link to view the same information in Google Earth.



The image to the left is a screenshot of property information as seen in Google Earth. You can click on the middle of the index number to get at the property information balloon.

There were a number of tax maps of municipalities dating from 1859 that have also been added. Please take a look at them here:

[http://www.clintoncountyohgis.org/archived\\_maps.htm](http://www.clintoncountyohgis.org/archived_maps.htm)

---

I've been slowly changing the look and feel of each of the pages on our GIS Web Page, adding buttons instead of simple text and streamlining graphics and textural information. Please let me know what you think by sending me an e-mail at [merrittjoe@hotmail.com](mailto:merrittjoe@hotmail.com).

---

There have been a number of minor changes on our Precincts page, and we have recently created one map 34x44 inches in size, showing all of the county precincts. We also have a very nice, high quality Wilmington Precincts 8 1/2 x 14 in. map available. Feel free to take a look here:

[http://www.clintoncountyohgis.org/precinct\\_maps.htm](http://www.clintoncountyohgis.org/precinct_maps.htm)

---

For a quick look at what has been updated on the GIS Web Page you can always look at the Web Page Updates-page at:

[http://clintoncountyohgis.org/web\\_page\\_updates.htm](http://clintoncountyohgis.org/web_page_updates.htm)

If anyone has any questions or comments please let me know; enjoy the info!

*If there is anyone on this e-mail list that would rather not be, please let me know and I will promptly delete you e-mail address from our lists.*

*Joe Merritt  
GIS Manager  
Clinton County, OH  
County Web Page: [www.co.clinton.oh.us](http://www.co.clinton.oh.us)  
GIS Department: [www.clintoncountyohgis.org](http://www.clintoncountyohgis.org)*