

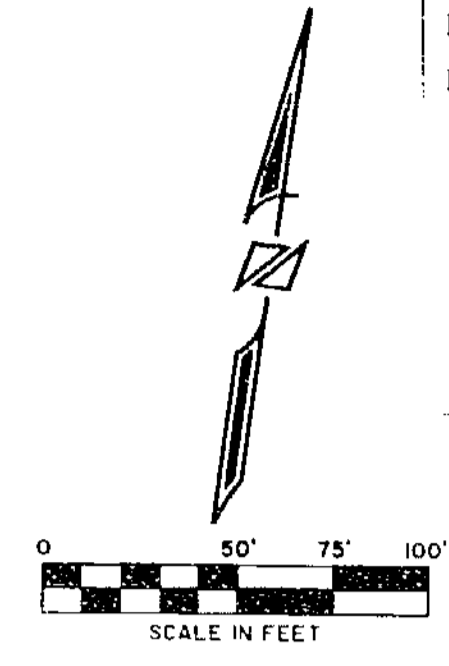
# CROSS CREEK

## PHASE 1 SECTION 1

### CITY OF WILMINGTON CLINTON COUNTY, OHIO

SURVEYORS RECORD  
Book 32 Page 69  
12-12-2001

Received For Record  
Recorded: December 11, 2001  
Book No: 8 Page: 101-B  
Fee: \$ 40.00  
  
SANDRA K. WILT  
Recorder  
Clinton County, OHIO



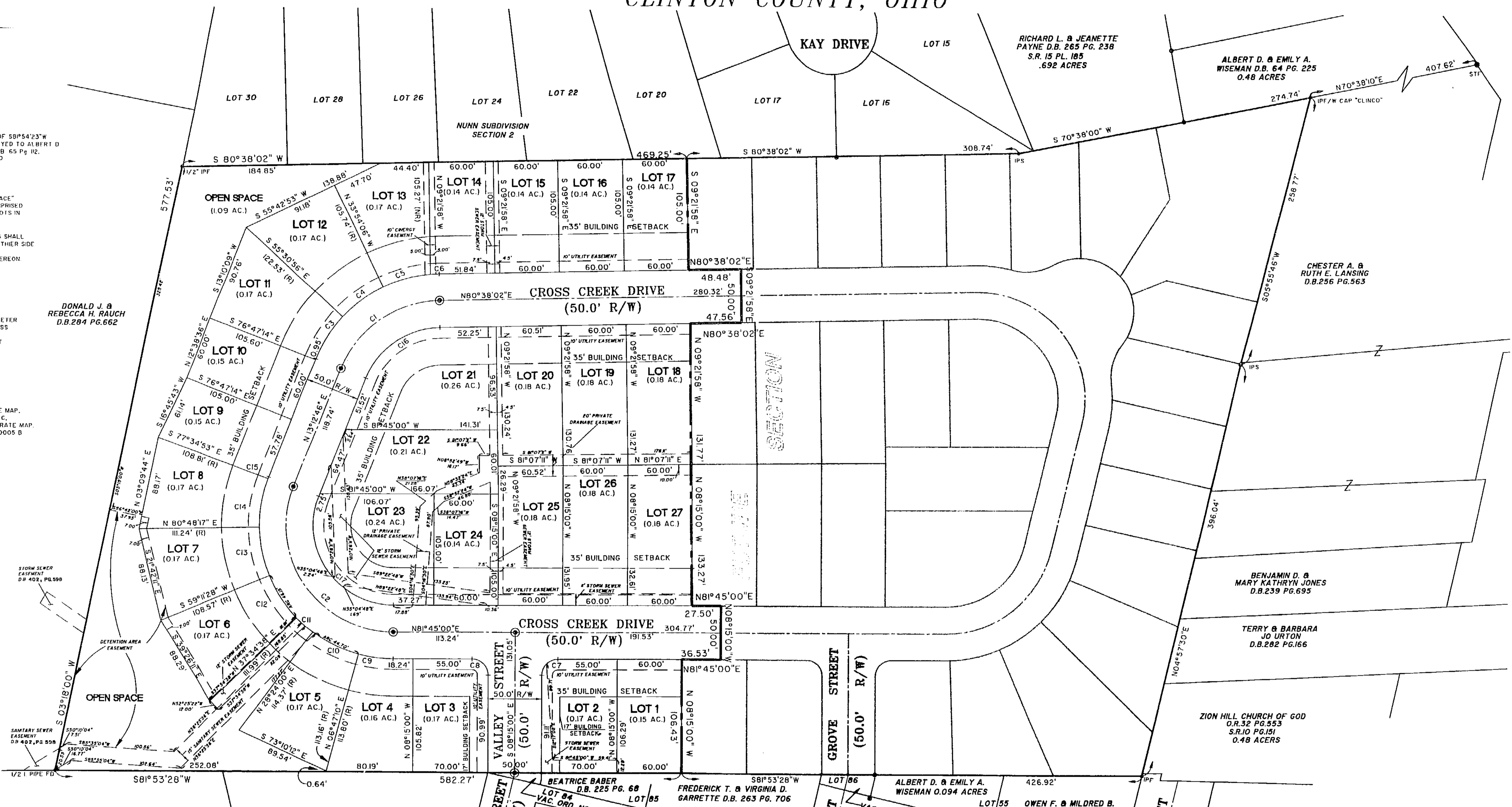
**BASIS OF BEARINGS**  
THE BEARINGS SHOWN HEREON ARE BASED ON THE BEARING OF S89°54'23"W FOR THE SOUTHERLY LINE OF THE 13.614 ACRE TRACT CONVEYED TO ALBERT D. & EMILY A. WISEMAN AS SHOWN IN THE DEED OF RECORD IN D.B. 65 PG. 112, RECORDS OF THE RECORDER'S OFFICE, CLINTON COUNTY, OHIO.

**NOTES:**  
1. AREAS DESIGNATED AND DELINEATED HEREON AS "OPEN SPACE" SHALL BE OWNED AND MAINTAINED BY AN ASSOCIATION COMPRISED OF OWNERS OF THE FEES SIMPLE TITLES TO ALL OF THE LOTS IN CROSS CREEK SUBDIVISION PHASE 1, SECTION 2 AND ALL SUBSEQUENT SECTIONS OF THIS DEVELOPMENT.  
2. IN ADDITION TO THE EASEMENTS SHOWN HEREON, ALL LOTS SHALL HAVE A SIX (6) FOOT UTILITY EASEMENT LOCATED ALONG THEIR SIDE AND REAR LOT LINES.  
3. OCCUPATION IN GENERAL FITS THE SURVEY LINES SHOWN HEREON.

**LEGEND**

- (NR) = NON RADIAL
- (R) = RADIAL
- MONUMENT TO BE SET OF IRON OR STEEL BAR WITH A DIAMETER OF ONE-HALF INCH TO ONE INCH AND A LENGTH OF NOT LESS THAN 36 INCHES. AFTER CONSTRUCTION AND GRADING IS COMPLETED, MONUMENTS SHALL BE PLACED ON ALL LOT CORNERS WHERE THEY DO NOT EXIST AT THAT TIME.
- IPF = IRON PIN FOUND
- IPF = IRON PIPE FOUND
- IPS = 5/8" IRON PIN WITH CAP STAMPED "ZAND" SET
- STF = STONE FOUND

**FLOOD ZONE DESIGNATION**  
THIS SITE LIES IN ZONE "C" OF THE FLOOD INSURANCE RATE MAP, CLINTON COUNTY, COMMUNITY PANEL NUMBER 990075 000 C, EFFECTIVE DATE AUGUST 24, 1979 AND FLOOD INSURANCE RATE MAP, CITY OF WILMINGTON, COMMUNITY PANEL NUMBER 990075 000 B, EFFECTIVE DATE OF SEPTEMBER 29, 1978.



DONALD J. & REBECCA H. RAUCH  
D.B. 294 PG. 662

ALBERT D. & EMILY A. WISEMAN D.B. 64 PG. 225  
0.48 ACRES

RICHARD L. & JEANETTE PAYNE D.B. 265 PG. 238  
S.R. 15 PL. 185  
.692 ACRES

CHESTER A. & RUTH E. LANSING  
D.B. 256 PG. 563

MARY KATHRYN JONES  
D.B. 239 PG. 695

TERRY & BARBARA JO URTON  
D.B. 202 PG. 166

ZION HILL CHURCH OF GOD  
D.B. 32 PG. 933  
S.R. 10 PG. 151  
0.48 ACERS

ALBERT D. & EMILY A. WISEMAN O.094 ACRES

OWEN F. & MILDRED B. GARNER O.R. 48 PG. 802

FREDERICK T. & VIRGINIA D. GARRETTE D.B. 263 PG. 706

BEATRICE BABER D.B. 225 PG. 68

**CURVE TABLE**

CURVE #	DELTA	RADIUS	LENGTH	CHD. BEARING	CHD. DIST.
C1	89°54'23"	100.00	124.54'	S 44°30'00" E	105.98'
C2	89°54'23"	100.00	124.54'	S 44°30'00" E	105.98'
C3	89°54'23"	100.00	124.54'	S 44°30'00" E	105.98'
C4	89°54'23"	100.00	124.54'	S 44°30'00" E	105.98'
C5	89°54'23"	100.00	124.54'	S 44°30'00" E	105.98'
C6	89°54'23"	100.00	124.54'	S 44°30'00" E	105.98'
C7	89°54'23"	100.00	124.54'	S 44°30'00" E	105.98'
C8	89°54'23"	100.00	124.54'	S 44°30'00" E	105.98'
C9	89°54'23"	100.00	124.54'	S 44°30'00" E	105.98'
C10	89°54'23"	100.00	124.54'	S 44°30'00" E	105.98'
C11	89°54'23"	100.00	124.54'	S 44°30'00" E	105.98'
C12	89°54'23"	100.00	124.54'	S 44°30'00" E	105.98'
C13	89°54'23"	100.00	124.54'	S 44°30'00" E	105.98'
C14	89°54'23"	100.00	124.54'	S 44°30'00" E	105.98'
C15	89°54'23"	100.00	124.54'	S 44°30'00" E	105.98'
C16	89°54'23"	100.00	124.54'	S 44°30'00" E	105.98'
C17	89°54'23"	100.00	124.54'	S 44°30'00" E	105.98'

CLINTON METROPOLITAN HOUSING AUTHORITY  
S.R. 17 PL. 2  
1.317 AC

S.R. 16 PL. 101  
1.254 AC

**R.D. Zande & Associates**  
11500 NORTH LAKE DR.  
SUITE 150  
CINCINNATI, OHIO 45249  
(513)769-5009  
FAX: (513)769-5030

APPROVED FOR  
MATHEMATICAL ACCURACY  
CLINTON COUNTY ENGINEER  
*[Signature]*  
[0-5-0]

DRAWN BY: JAY

P:\5509\RECORD PLAT\CROSS CREEK PH1 SEC1.DWG 08/29/01 10:29:50 AM EDT