

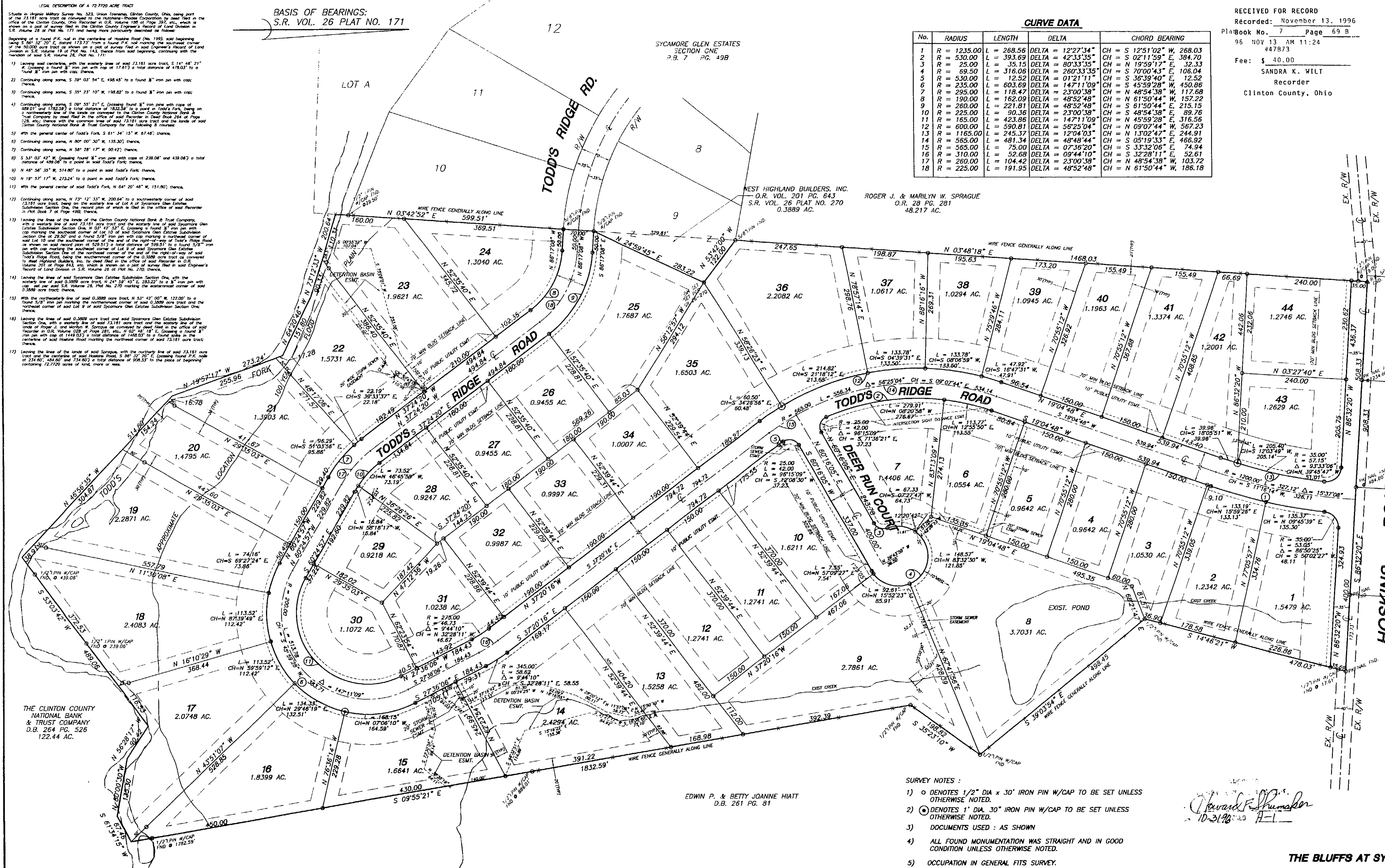
27-171  
11-13-96

RECEIVED FOR RECORD  
Recorded: November 13, 1996  
Pls. Book No. 7 Page 69 B  
96 NOV 13 AM 11:24  
447873  
Fee: \$ 40.00  
SANDRA K. WILT  
Recorder  
Clinton County, Ohio

BASIS OF BEARINGS:  
S.R. VOL. 26 PLAT NO. 171

**CURVE DATA**

No.	RADIUS	LENGTH	DELTA	CHORD BEARING
1	R = 1235.00	L = 268.56	DELTA = 12°27'34"	CH = S 12°51'02" W 268.03
2	R = 530.00	L = 393.69	DELTA = 42°33'35"	CH = S 02°11'59" E 384.70
3	R = 25.00	L = 35.15	DELTA = 80°33'35"	CH = N 19°59'17" E 32.33
4	R = 69.50	L = 316.08	DELTA = 260°33'35"	CH = S 70°00'43" E 108.04
5	R = 630.00	L = 12.50	DELTA = 01°21'11"	CH = S 36°38'40" E 12.59
6	R = 235.00	L = 603.69	DELTA = 147°11'09"	CH = S 45°59'28" W 450.86
7	R = 295.00	L = 118.47	DELTA = 23°00'38"	CH = N 48°54'38" W 117.68
8	R = 190.00	L = 182.08	DELTA = 48°52'48"	CH = N 61°50'44" W 157.22
9	R = 260.00	L = 221.81	DELTA = 48°52'48"	CH = S 61°50'44" E 215.15
10	R = 225.00	L = 90.36	DELTA = 23°00'38"	CH = S 48°54'38" E 89.76
11	R = 165.00	L = 423.86	DELTA = 147°11'09"	CH = N 45°59'28" E 316.56
12	R = 600.00	L = 590.81	DELTA = 56°25'04"	CH = N 09°07'44" W 567.23
13	R = 1165.00	L = 245.37	DELTA = 12°04'03"	CH = N 13°02'47" E 244.91
14	R = 565.00	L = 481.34	DELTA = 48°48'44"	CH = S 05°19'33" E 466.92
15	R = 565.00	L = 75.00	DELTA = 07°36'20"	CH = S 33°32'06" E 74.94
16	R = 310.00	L = 32.68	DELTA = 09°44'10"	CH = S 32°28'11" E 32.61
17	R = 260.00	L = 104.42	DELTA = 23°00'38"	CH = N 48°54'38" W 103.72
18	R = 225.00	L = 191.95	DELTA = 48°52'48"	CH = N 61°50'44" W 186.18

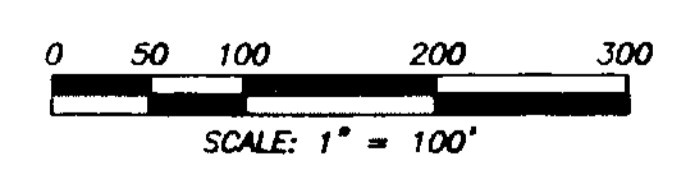


- 1) Leaving said corner with the westerly line of said 23.181 acre tract, S 141°46'21" E, 100.00' to a point on the westerly line of said 23.181 acre tract, S 141°46'21" E, 100.00' from said corner.
- 2) Continuing along same, S 39°03'54" E, 458.45' to a found 1/2" iron pin with cap.
- 3) Continuing along same, S 35°23'10" W, 186.82' to a found 1/2" iron pin with cap.
- 4) Continuing along same, S 09°55'21" E, 430.00' to a found 1/2" iron pin with cap.
- 5) Continuing along same, N 80°00'30" W, 135.40' thence.
- 6) Continuing along same, N 58°28'17" W, 50.42' thence.
- 7) S 33°03'42" E, 430.00' (bearing found 1/2" iron pin with cap at 238.06' and 430.00' at total distance of 430.00' to a point in said Todd's Ridge thence.
- 8) N 48°58'35" W, 514.80' to a point in said Todd's Ridge thence.
- 9) N 19°57'17" W, 232.44' to a point in said Todd's Ridge thence.
- 10) With the general corner of said Todd's Ridge, N 64°20'48" W, 151.80' thence.
- 11) Continuing along same, N 73°12'35" W, 209.64' to a westerly line of said 23.181 acre tract, S 141°46'21" E, 100.00' to a point on the westerly line of said 23.181 acre tract, S 141°46'21" E, 100.00' from said corner.
- 12) Leaving the line of the lands of the Clinton County National Bank & Trust Company, with a westerly line of said 23.181 acre tract and the westerly line of said Sparrow Glen Subdivision Section One, N 03°42'52" E, 599.51' to a found 1/2" iron pin with cap.
- 13) Leaving the line of said 23.181 acre tract and the westerly line of said Sparrow Glen Subdivision Section One, N 03°42'52" E, 599.51' to a found 1/2" iron pin with cap.
- 14) Leaving the line of said 23.181 acre tract and the westerly line of said Sparrow Glen Subdivision Section One, N 03°42'52" E, 599.51' to a found 1/2" iron pin with cap.
- 15) With the westerly line of said 23.181 acre tract, N 24°59'45" E, 281.22' to a found 1/2" iron pin with cap.
- 16) Leaving the line of said 23.181 acre tract and the westerly line of said Sparrow Glen Subdivision Section One, with a westerly line of said 23.181 acre tract and the westerly line of said Sparrow Glen Subdivision Section One, N 03°42'52" E, 599.51' to a found 1/2" iron pin with cap.
- 17) Leaving the line of the lands of said Sparrow, with the westerly line of said 23.181 acre tract and the westerly line of said Sparrow, S 33°03'42" E, 430.00' to a found 1/2" iron pin with cap.

EDWIN P. & BETTY JOANNE HIATT  
D.B. 261 PG. 81

**AREA SUMMARY**  
64.8078 AC. IN LOTS  
7.9642 AC. IN R/W  
72.7720 AC. TOTAL

- SURVEY NOTES:**
- 1) ○ DENOTES 1/2" DIA x 30" IRON PIN W/CAP TO BE SET UNLESS OTHERWISE NOTED.
  - 2) ⊙ DENOTES 1" DIA. 30" IRON PIN W/CAP TO BE SET UNLESS OTHERWISE NOTED.
  - 3) DOCUMENTS USED: AS SHOWN
  - 4) ALL FOUND MONUMENTATION WAS STRAIGHT AND IN GOOD CONDITION UNLESS OTHERWISE NOTED.
  - 5) OCCUPATION IN GENERAL FITS SURVEY.
  - 6) THERE IS NO EVIDENCE OF OCCUPATION
  - 7) DOCUMENTS USED: AS SHOWN



**THE BLUFFS AT SYCAMORE GLEN**

PREPARED BY  
HENDERSON & BODWELL  
CONSULTING ENGINEERS  
3530 IRWIN-SIMPSON RD.  
MASON, OHIO 45040  
513-398-1728  
PLAINVIEW, NEW YORK  
516-935-8870



DWN: JRS CKD: BY SP SCALE: 1" = 100' DATE: 9-11-96 SHT: 2 OF 2