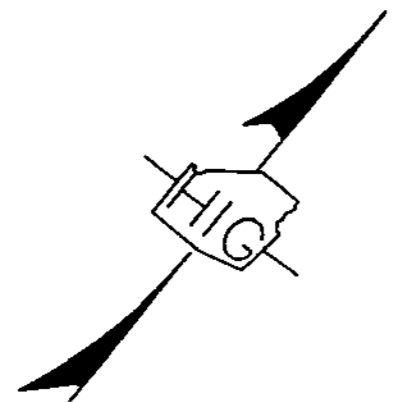


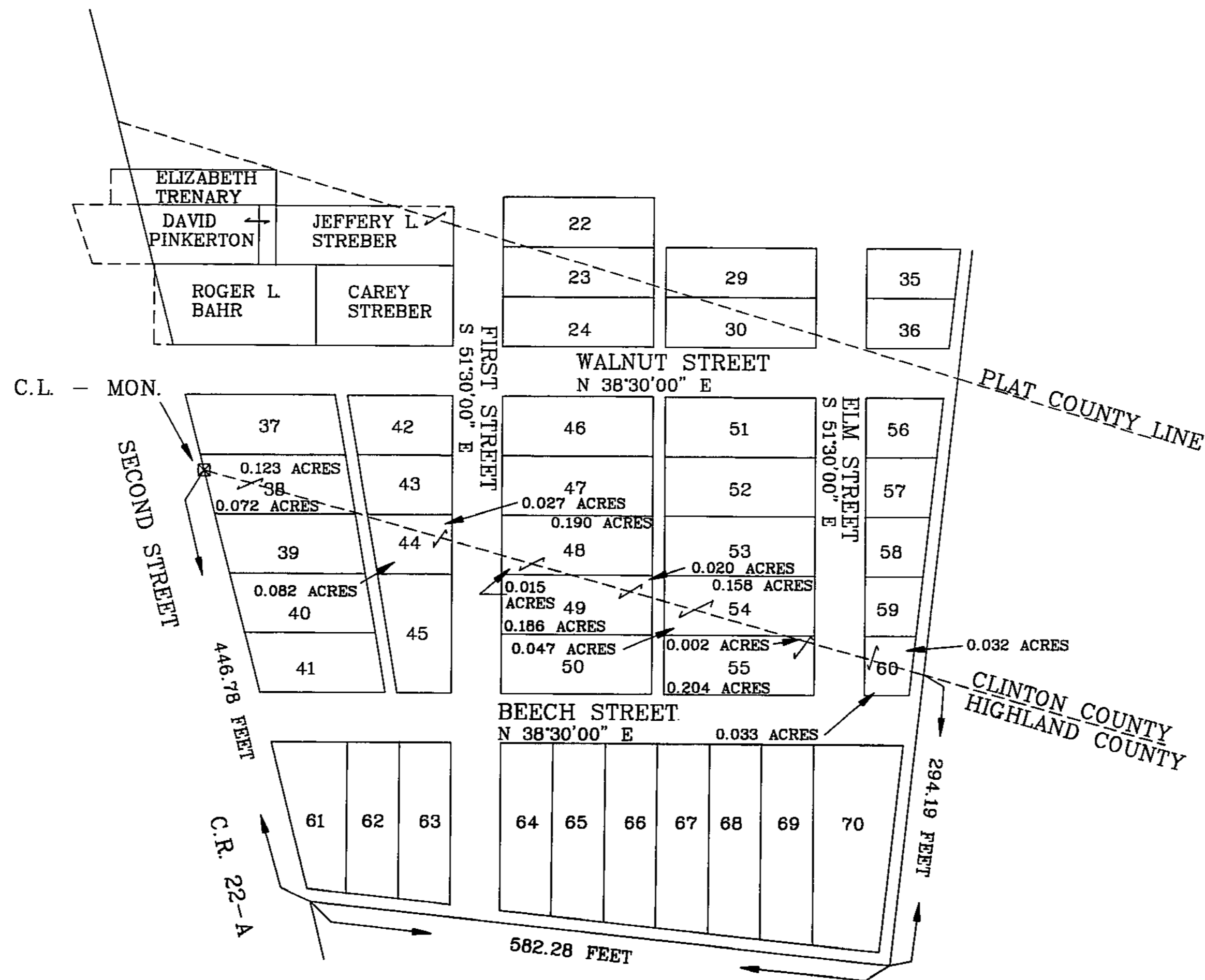
CLINTON VOLUME 19 PLAT NO. 185
12-07-1987

HIGHLAND COUNTY ENGINEER
RECORD OF LAND SURVEYS
DATE: 3/26/87
SCALE: 1"=100'
PLAT REFERENCE
PLAT BOOK 1 PAGE 530
TOWNSHIP: PENN TOWNSHIP
MILITARY SURVEY NO. 1078

THIS PLAT SHOWS THE LOCATION OF THE COUNTY LINE AS IT APPLIES TO FAIRVIEW SUBDIVISION AND ADJACENT LAND. THE LINE IS ESTABLISHED IN ACCORDANCE WITH THE COUNTY LINE SURVEY AND MONUMENTS SET BY RICHARD D. ROLL IN AUGUST, 1975 AND AS RECORDED IN HIGHLAND CO. PLAT BOOK NO. 6, PAGE 20. THIS SURVEY WAS ADOPTED BY THE HIGHLAND COUNTY COMMISSIONERS RESOLUTION NO. 1975-73 ON 11/03/75 AND ADOPTED BY THE CLINTON COUNTY COMMISSIONERS RESOLUTION NO. 371 ON 10/27/75.



RECEIVED FOR RECORD
RECORDED
BOOK NO. 7 PAGE: 32 A&B
1987 DEC 9 AM 9:09
FEE \$ —
JEAN S. RICHARDSON
RECORDER
CLINTON COUNTY, OHIO
89426



LEGEND
 ■ MONUMENT FOUND

0 100 200 300
 SCALE

HIGHLAND COUNTY ENGINEER
HILLSBORO, OHIO
 COUNTY LINE LOCATION
FAIRVIEW SUBDIVISION
 LOWELL McCARTY
COUNTY ENGINEER
 DRAWN BY: [Signature] CHECKED BY: [Signature] DATE: 3/26/87