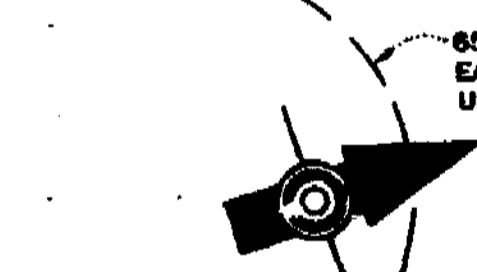
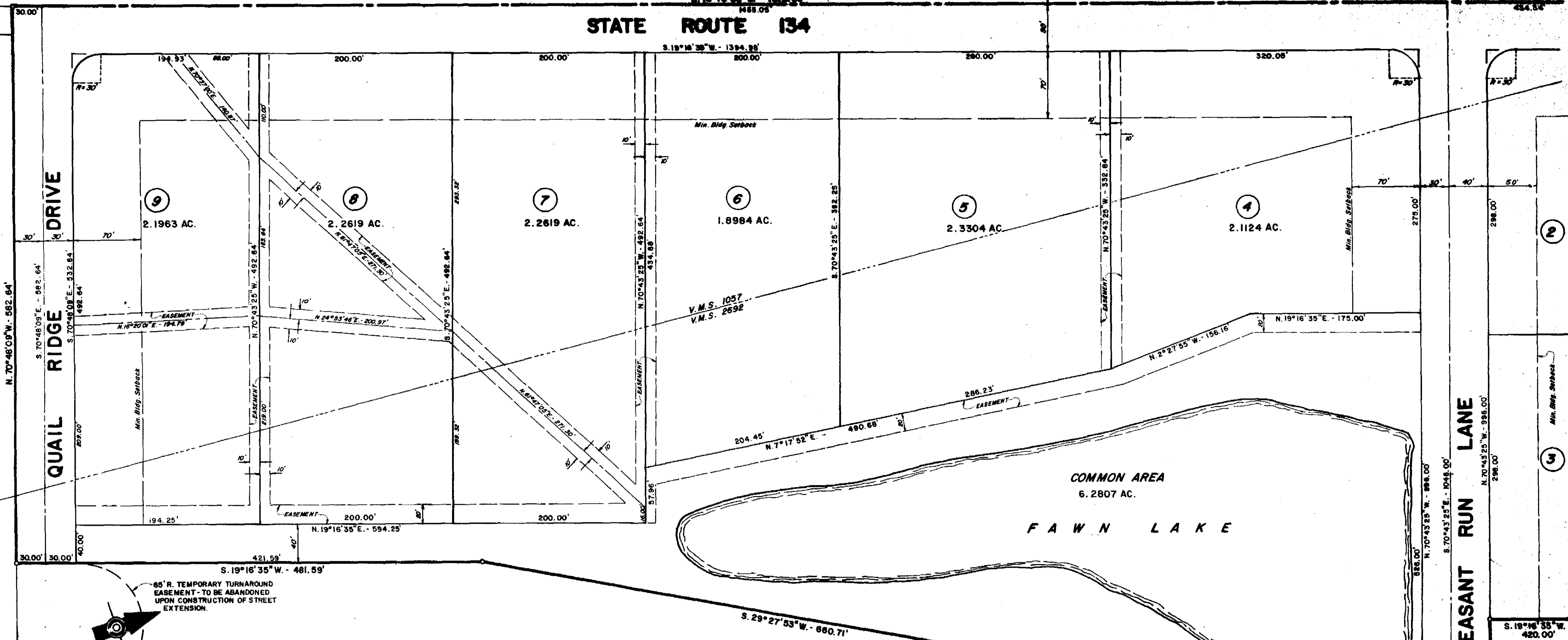


PHEASANT RUN SUBDIVISION

SURVEYORS RECORD
Book 19 Page 91

STATE ROUTE 134



BOOK NO. 7 PAGE 28B

Approved this 30th day of April, 1987.
William J. Temple
 Clinton County Engineer

Approved this 1st day of MAY, 1982.
Robert W. Holmes
 City Engineer - City of Wilmington, Ohio

Transferred this _____ day of _____, 19____.

Clinton County Auditor

Filed for record this 4th day of MAY, 1987 at
3:28 P.M.

Recorded this 4th day of MAY, 1987 in Plat
 Book 7, Page 28 A & B.

File No. 86406
 Fee \$ 40.00

John S. Richardson
 Clinton County Recorder

Approved by the Clinton County Regional Planning Commission in accordance with the Subdivision Resolution.
 By: *J. R. Williams* President
Russell Roberts Secretary Date: 5-4-87

Void unless recorded before _____, 19____.

Approved by the City of Wilmington, Ohio Planning Commission.
 By: *Clifford J. Roberts* Chairman Date: 5/4/87

ACCEPTANCE OF DEDICATIONS

Be it resolved by the Board of County Commissioners, Clinton County, Ohio, that the dedications shown on this plat are hereby approved and accepted this 4th day of May, 1987.

Be it of County Commissioners:
David R. Stewart
James L. ...
David ...

The approval of this plat by the Board of County Commissioners does not constitute an approval by the Board of County Commissioners and the Board of County Commissioners and the Board of County Commissioners.

QUAIL RIDGE DRIVE

QUAIL RIDGE DRIVE IS BUILT FOR EMERGENCY USE. IT WILL MEET CURRENT COUNTY SUBDIVISION ROAD STANDARDS AFTER 20 LOTS HAVE BEEN PLATTED AND WILL BE BUILT TO THESE STANDARDS AT THAT TIME. UNTIL THIS ROAD MEETS CURRENT STANDARDS, NO MAINTENANCE WILL BE PERFORMED AND THE ROAD WILL NOT BE ACCEPTED INTO THE COUNTY ROAD SYSTEM.

RESTRICTIVE COVENANTS

RESTRICTIVE COVENANTS ARE RECORDED IN PLAT BOOK _____, PAGES (O.R. 22 PAGE 409)