

THE MEADOWS

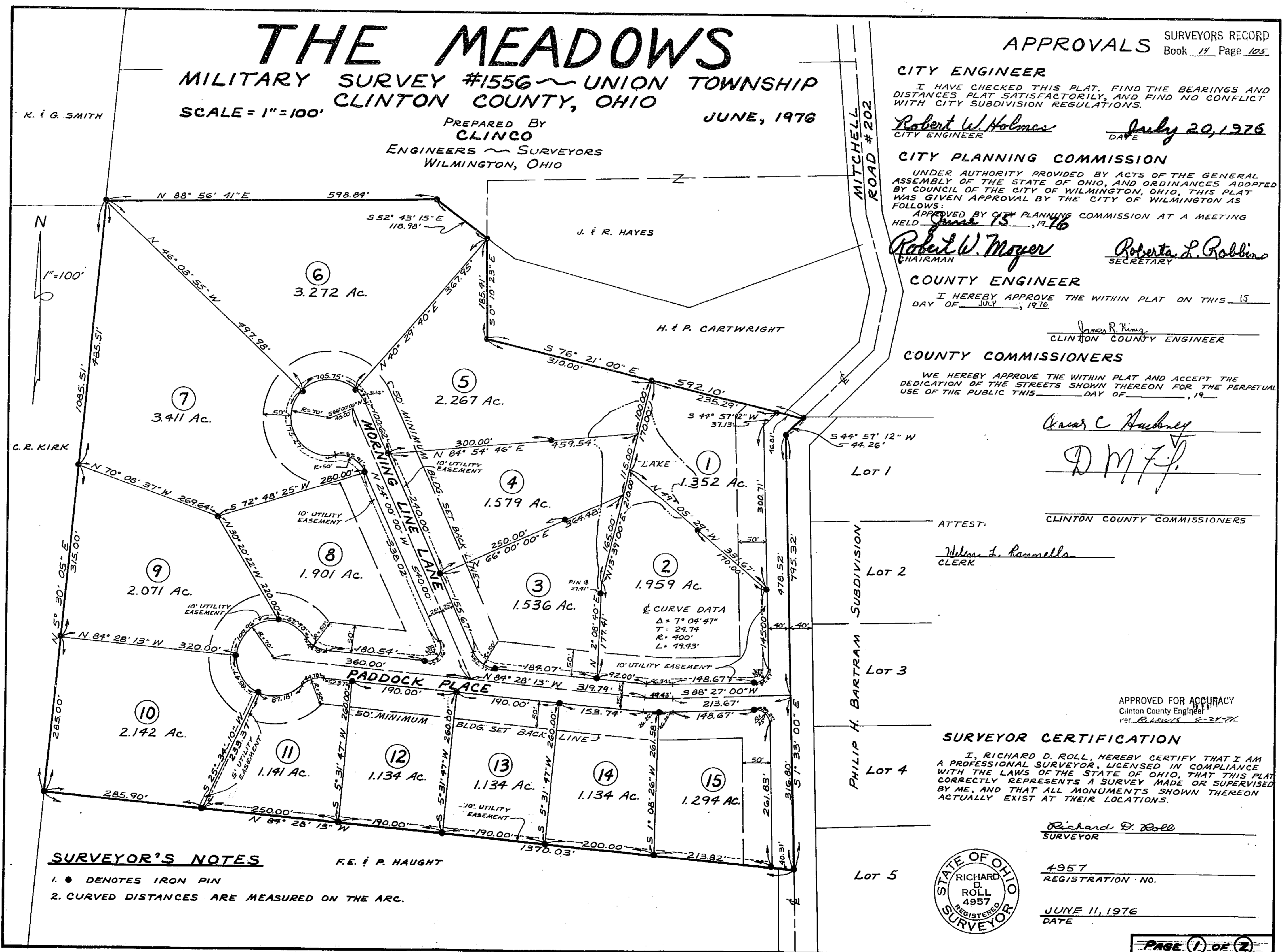
MILITARY SURVEY #1556 ~ UNION TOWNSHIP
CLINTON COUNTY, OHIO

K. & G. SMITH

SCALE = 1" = 100'

PREPARED BY
CLINCO
ENGINEERS ~ SURVEYORS
WILMINGTON, OHIO

JUNE, 1976



SURVEYOR'S NOTES

1. ● DENOTES IRON PIN
2. CURVED DISTANCES ARE MEASURED ON THE ARC.

F.E. & P. HAUGHT

SURVEYORS RECORD
Book 11 Page 108

CITY ENGINEER

I HAVE CHECKED THIS PLAT, FOUND THE BEARINGS AND DISTANCES PLAT SATISFACTORILY, AND FIND NO CONFLICT WITH CITY SUBDIVISION REGULATIONS.

Robert W. Holmes
CITY ENGINEER

July 20, 1976
DATE

CITY PLANNING COMMISSION

UNDER AUTHORITY PROVIDED BY ACTS OF THE GENERAL ASSEMBLY OF THE STATE OF OHIO, AND ORDINANCES ADOPTED BY COUNCIL OF THE CITY OF WILMINGTON, OHIO, THIS PLAT WAS GIVEN APPROVAL BY THE CITY OF WILMINGTON AS FOLLOWS:

APPROVED BY CITY PLANNING COMMISSION AT A MEETING HELD June 15, 1976

Robert W. Meyer *Roberta L. Robbins*
CHAIRMAN SECRETARY

COUNTY ENGINEER

I HEREBY APPROVE THE WITHIN PLAT ON THIS 15 DAY OF JULY, 1976.

James R. Kims
CLINTON COUNTY ENGINEER

COUNTY COMMISSIONERS

WE HEREBY APPROVE THE WITHIN PLAT AND ACCEPT THE DEDICATION OF THE STREETS SHOWN THEREON FOR THE PERPETUAL USE OF THE PUBLIC THIS 15 DAY OF JULY, 1976.

Arac C. Buckner

PHILIP H. BARTRAM SUBDIVISION

Lot 1

Lot 2

Lot 3

Lot 4

Lot 5

ATTEST:

Walter L. Samuels
CLERK

APPROVED FOR ACCURACY
Clinton County Engineer
Richard D. Roll

SURVEYOR CERTIFICATION

I, RICHARD D. ROLL, HEREBY CERTIFY THAT I AM A PROFESSIONAL SURVEYOR, LICENSED IN COMPLIANCE WITH THE LAWS OF THE STATE OF OHIO, THAT THIS PLAT CORRECTLY REPRESENTS A SURVEY MADE OR SUPERVISED BY ME, AND THAT ALL MONUMENTS SHOWN THEREON ACTUALLY EXIST AT THEIR LOCATIONS.

Richard D. Roll
SURVEYOR

4957
REGISTRATION NO.

JUNE 11, 1976
DATE

