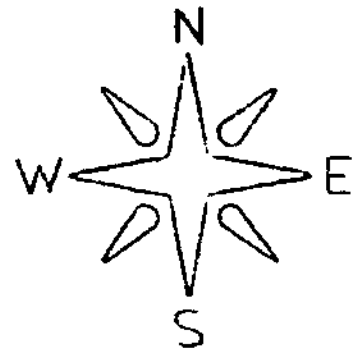
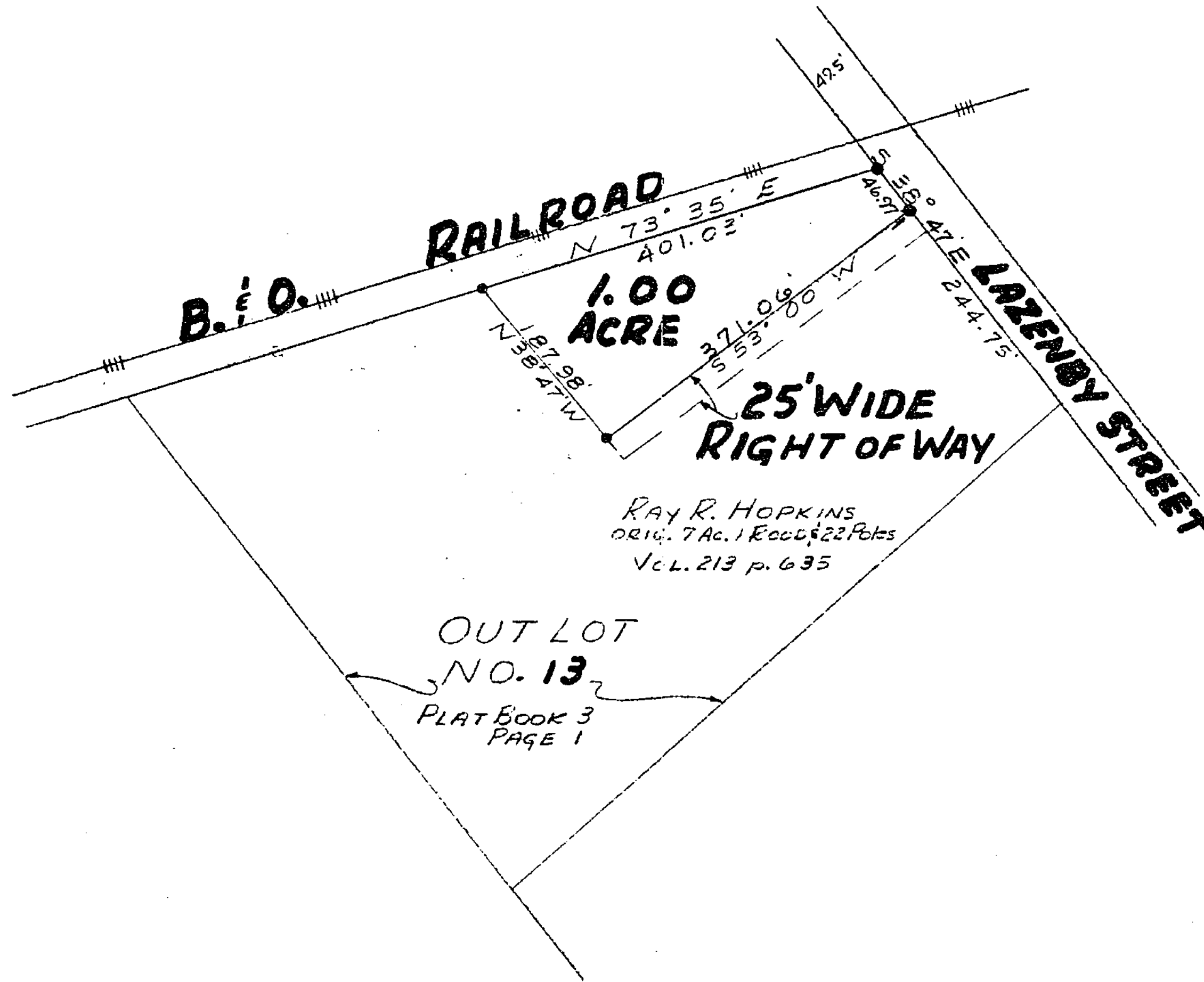


176
C



VOLUME _____ PLAT NO. _____
CLINTON COUNTY ENGINEERS
RECORD OF TOWN LOTS
DATE NOVEMBER 24, 1975
SCALE 1"=100'
DEED REFERENCE
DEED BOOK 213 PAGE 635
CORPORATION BLANCHESTER
ADDITION LAZENBY
OUT LOT NO. 13



*43979
RECORDED FOR RECORD
INDEXED
6 PAGE 541-2
1976 FEB -5 AM 2:40
SEE S 100
CLINTON COUNTY ENGINEERS
RECORD OF TOWN LOTS

LEGEND
● IRON PIN SET

APPROVED FOR TRANSFER
Clinton County Engineer
Per E. G. G. 1-28-75

APPROVAL
BLANCHESTER PLANNING COMMISSION

1-6-76
DATE

Donald E. Putman, Sec.
DIRECTOR

Robert E. Satterfield
CIVIL ENGINEER & SURVEYOR
WEST UNION, OHIO



SURVEY
FOR
RAY R. HOPKINS
PART OF OUT LOT NO. 13
LAZENBY'S ADDITION
VILLAGE OF BLANCHESTER
CLINTON COUNTY, OHIO
SCALE 1"=100' NOVEMBER 1975