

APPROVED BY BOARD OF COUNTY COMMISSIONERS
CLINTON COUNTY, OHIO
JULY 31, 1974

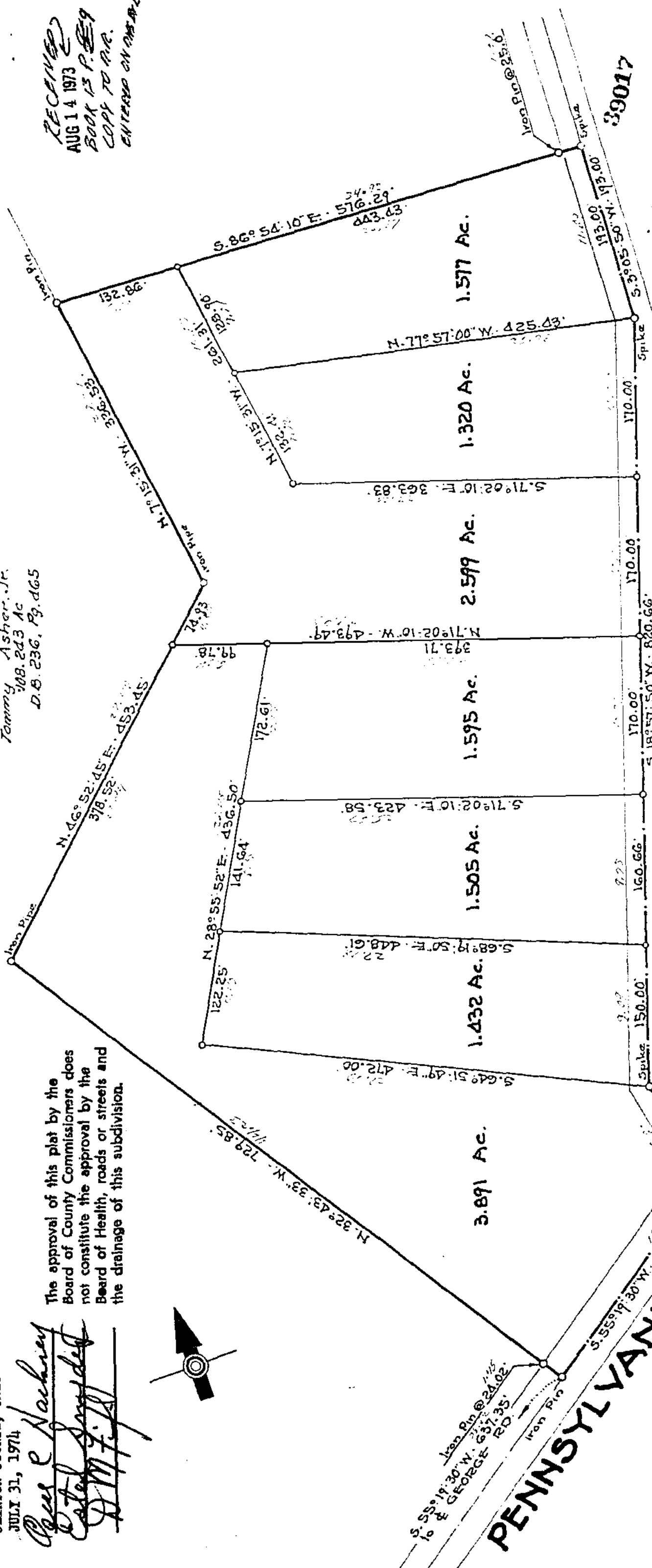
James P. Hachway
Robert J. Snyder
W. M. F. [Signature]

The approval of this plat by the Board of County Commissioners does not constitute the approval by the Board of Health, roads or streets and the drainage of this subdivision.



Tommy Asher, Jr.
108.243 Ac
D.B. 236, Pg. 465

RECEIVED
AUG 14 1973
BOOK 15 P. 889
COPY TO R.R.
ENTERED ON MAP



CREEK ROAD

Deed Reference:
Melvin E. & Eorella B. Baker
106.91 Ac. D.B. 228, Pg. 379.

RECEIVED FOR RECORD
RECORDED
BOOK NO. 6 PAGE 414
JUL 31 AM 3:14

JEAN S. RICHARDSON
RECORDER
CLINTON COUNTY, OHIO

PLAT OF SURVEY
13.919 ACRES
Y.M.S. 2245
VERNON TOWNSHIP, OHIO
CLINTON COUNTY, OHIO
Scale: 1"=100
June 1, 1973

GALE L. HELMS & ASSOC., INC.
Consulting Engineers & Surveyors
319 1/2 E. COURT ST.
WASHINGTON C.H., OHIO