

LOCATION PLAN

CLI-134 - 1.92 CLI-124 - 0.80

WILMINGTON-SARDINA ROAD MARTINSVILLE-HILLSBORO ROAD

CLINTON COUNTY

1956

SCALE 1" = 100'

RECORDED
 1956
 1956 JUN 8 11:14
 THE OHIO DEPARTMENT OF HIGHWAYS

10897

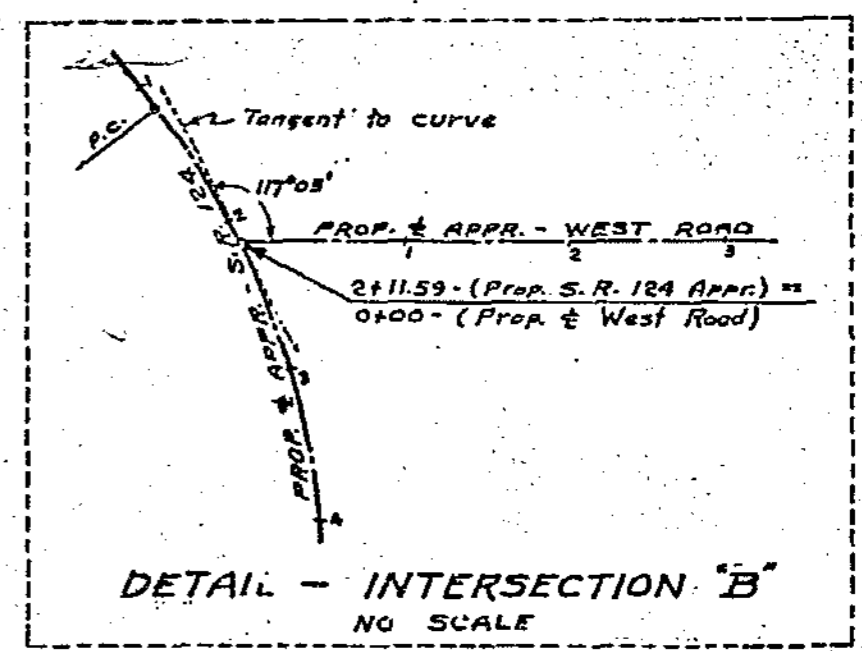
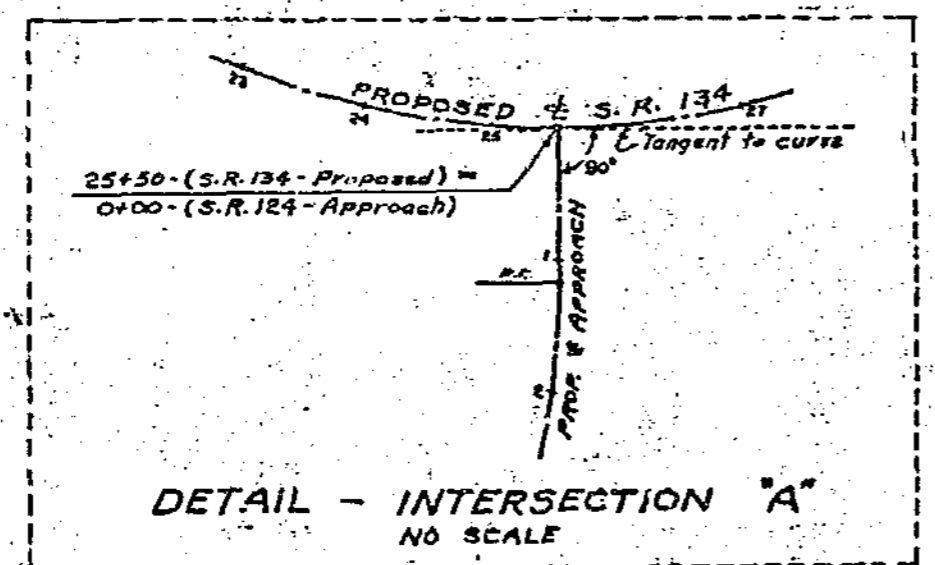
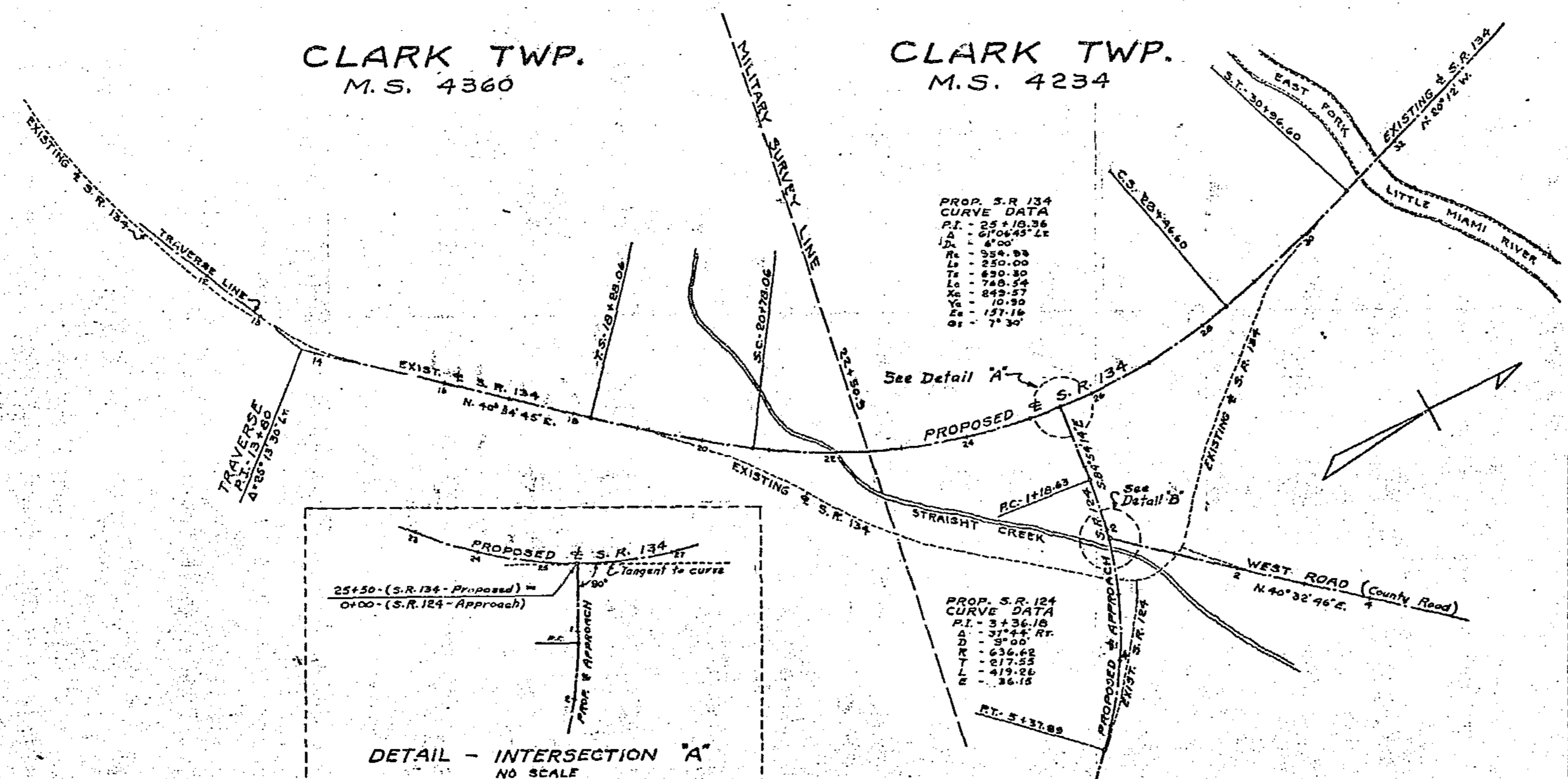
RECORDED

Platbook 5 Page 58-39

Clinton County Plat Record

I hereby certify that this is a true delineation of a survey made by the Ohio Department of Highways.

Date 6-6-56 William S. Roston
 Div. Deputy Director
 Registered Surveyor No. 2443
 Registered Engineer, No. 2159



S. R. 134 - CENTERLINE REFERENCE MONUMENTS					
STA. 14+00 (TRAVERSE)	T.S. STA. 18+28.06	S.C. STA. 20+78.06	STA. 25+50	C.S. STA. 28+46.60	STA. 33+00

S.R. 124 - CENTERLINE REFERENCE MONUMENTS		
R.C. STA. 1+18.63	M.P. STA. 3+36.18	STA. 6+50

Monument Setting Completed 1-22-58
 By H.C. Kelley
 CLI-134 - (1.92)
 CLI-124 - (0.80)