

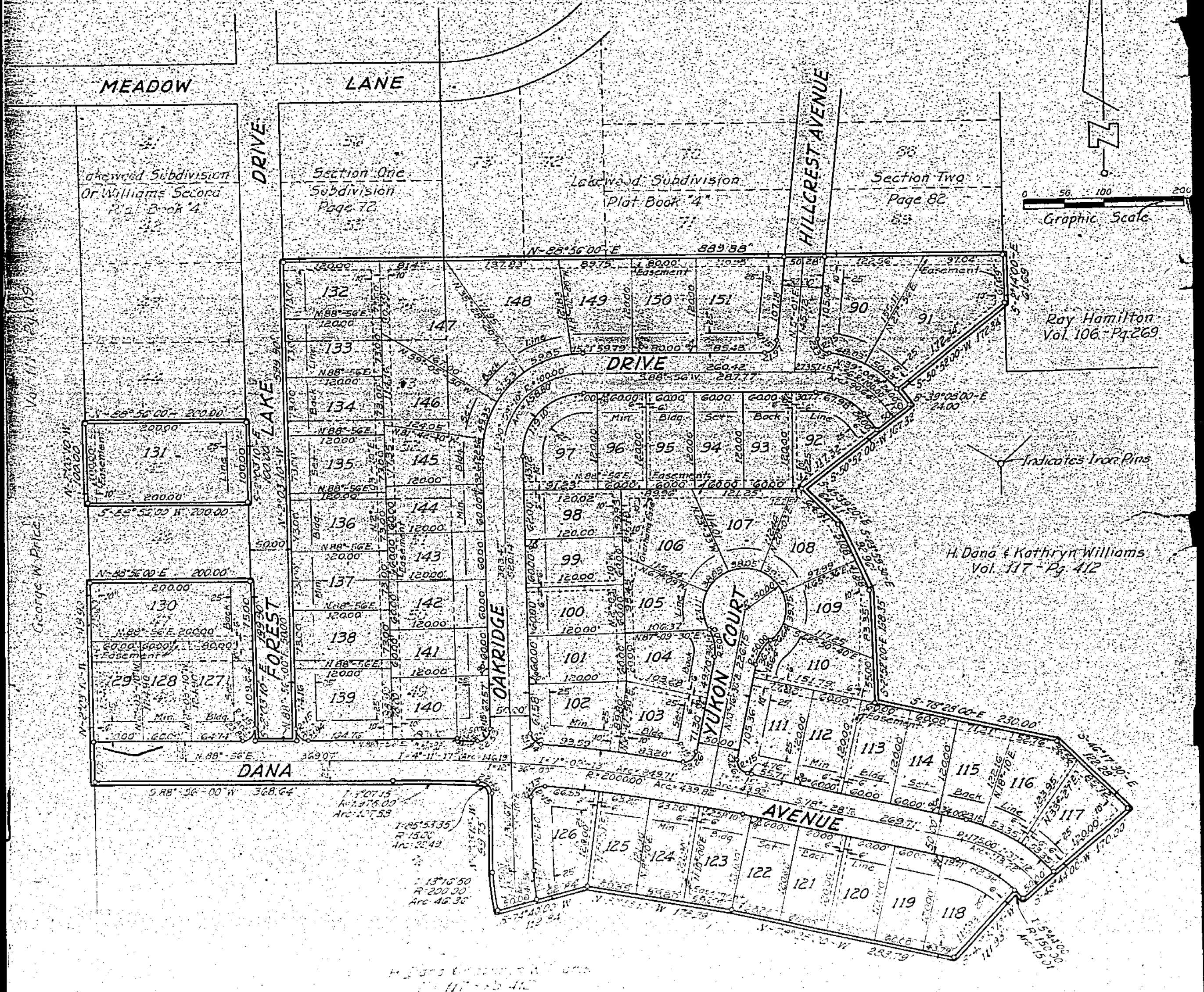
# RECORD PLAN LAKEWOOD SUBDIVISION SECTION THREE

LOCATED IN  
MILITARY SURVEY No 1556  
CITY OF WILMINGTON  
CLINTON COUNTY, OHIO  
CONTAINING 15.465 ACRES

SCALE 1"=100'

Prepared By  
RALPH L. WOOLPERT CO.  
CONSULTING ENGINEERS  
Dayton, Ohio - Feb., 1960

124  
B  
Book 5  
Page 349 & 350



Graphic Scale  
0 50 100 200

Ray Hamilton  
Vol 106 - Pg 269

H. Dana & Kathryn Williams  
Vol 117 - Pg 412

George W. Price

Vol 111 - Pg 179

H. Dana & Kathryn Williams  
Vol 117 - Pg 412