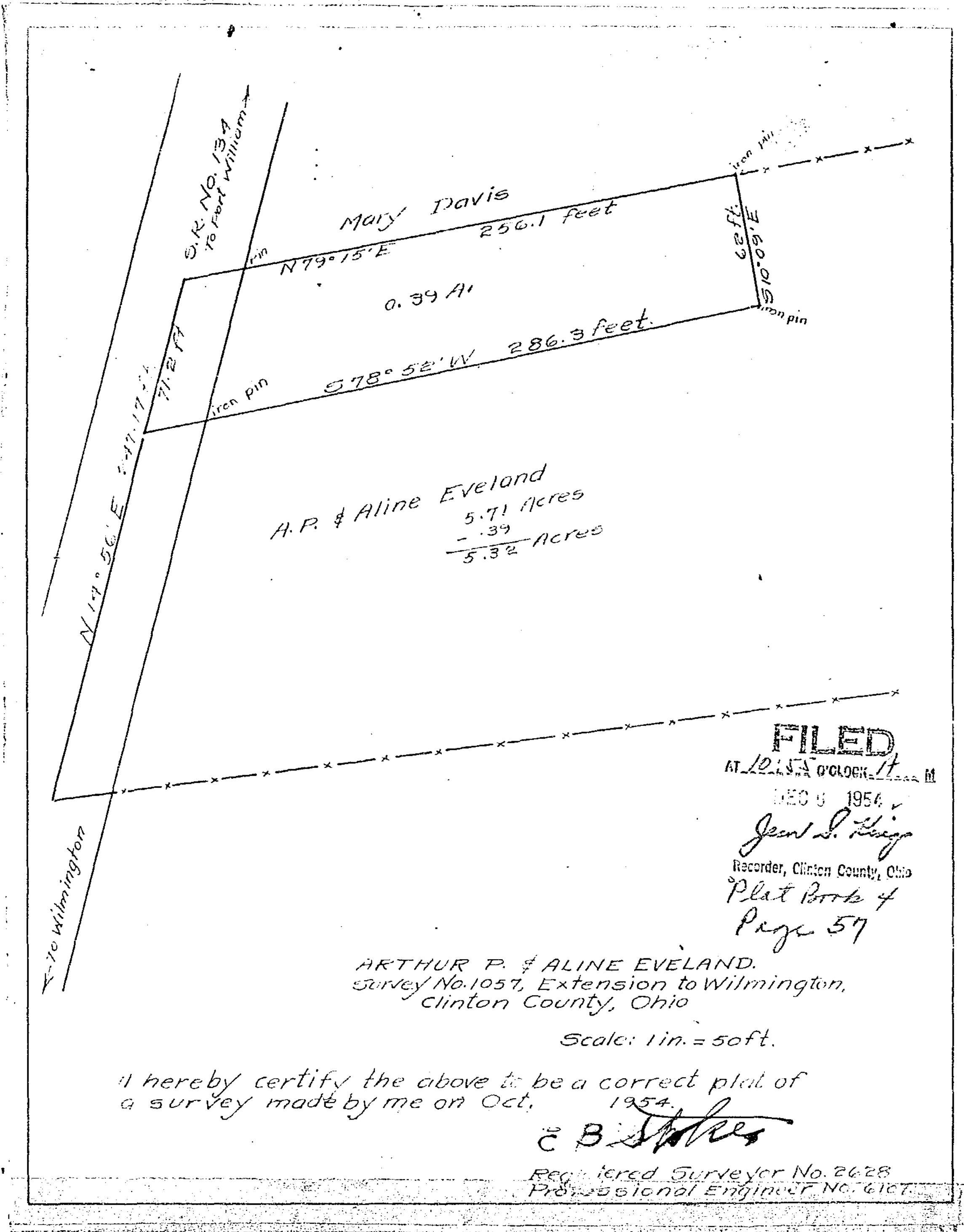


59A



I hereby certify the above to be a correct plat of a survey made by me on Oct. 1954.

C. B. Stokes

Registered Surveyor No. 2628
Professional Engineer No. 6167

We, Arthur P. Eveland and Aline C. Eveland, hereby certify that we are the owners of the real estate shown in the above Plat and that such subdivision of said real estate is for the purpose of immediate or future transfer of ownership.

Arthur P. Eveland
Aline C. Eveland

State of Ohio
Clinton County ss

On this 2nd day of December, 1954, before me, a Notary Public in and for Clinton County, Ohio, personally appeared Arthur P. Eveland and Aline C. Eveland, and acknowledged the signing of the above Plat and that such signing was their free and voluntary act and deed for the uses and purposes therein mentioned.

In witness whereof I have hereunto set my hand and affixed my official seal on the day and date above mentioned.

MAX H. DENNIS
NOTARY PUBLIC, STATE OF OHIO
My Commission Expires Sept. 29, 1955

Max H. Dennis
Notary Public

Approved by the Planning Commission of the City of Wilmington, Ohio, on the 2nd day of December, 1954.

Charles H. Holsler
Acting Mayor and Chairman of Planning Commission

Approved by the Council of the City of Wilmington, Ohio, on the 2nd day of December, 1954.

Charles H. Holsler
President of Council
Robert Tucker
Clerk