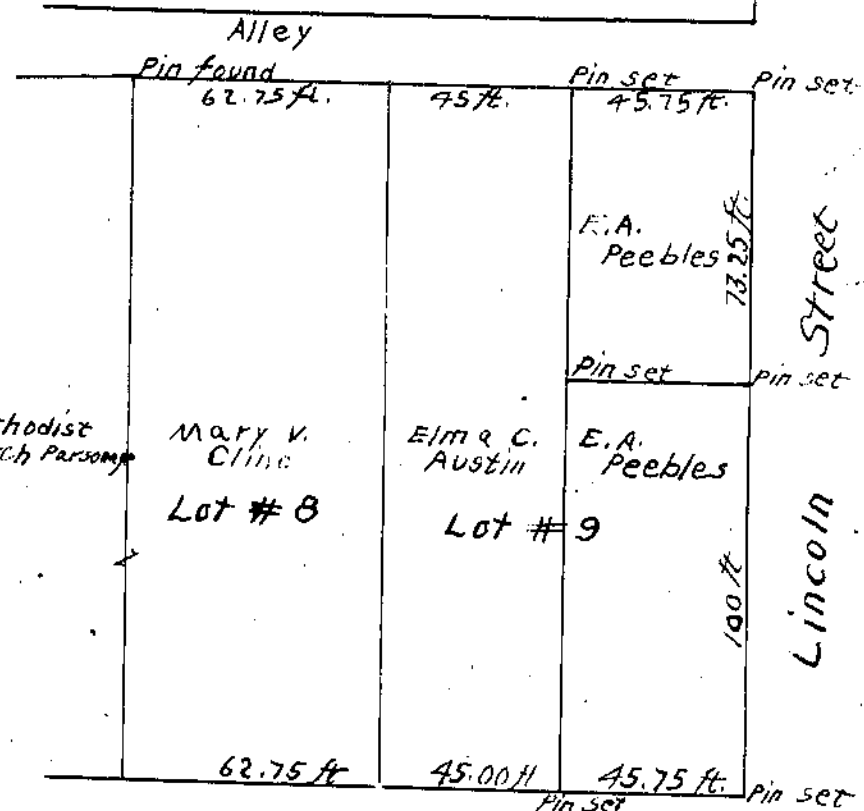


Survey No. 1939  
Clark Township  
Scale. 1 inch = 2 chains.

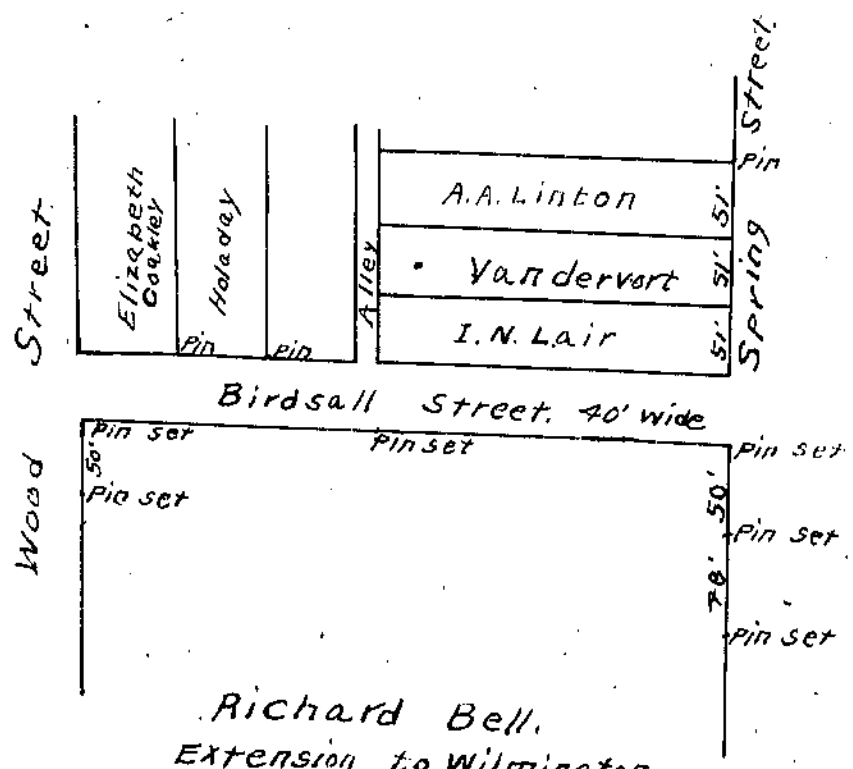
I hereby certify the above is a plat of a survey made by me at which time the pins were set (but did not calculate) on March 20, 1918.  
Howard Bollett  
County Surveyor.



Columbus Street.

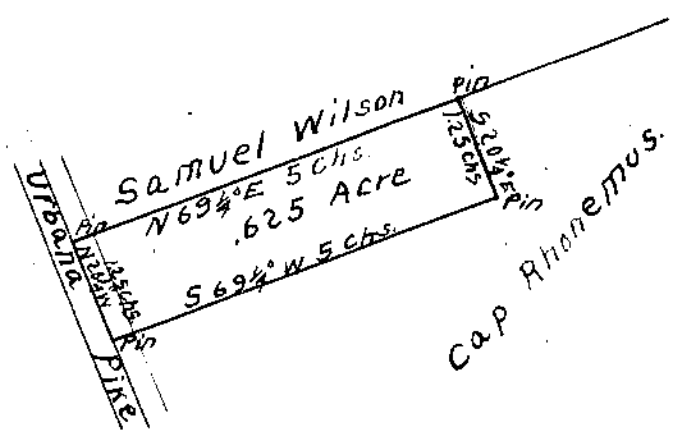
Faulkners Addition  
Wilmington  
Scale. 1 inch = 40 ft.

I hereby certify the above to be a correct plat of a survey made by me for E.A. Peebles on April 5, 1918.  
Howard Bollett  
County Surveyor.



Richard Bell.  
Extension to Wilmington.  
Should be Jesse Doug A.J.

I hereby certify the above is a correct plat of a survey made and pins set on April 12, 1918.  
Howard Bollett,  
County Surveyor.



Christian Rhonemus  
Survey No. 729  
Reeseville  
Richland Township  
Scale. 1 inch = 2 Chains.

I hereby certify the above is a correct plat of a survey made by me on April 16, 1918.  
Howard Bollett  
County Surveyor.