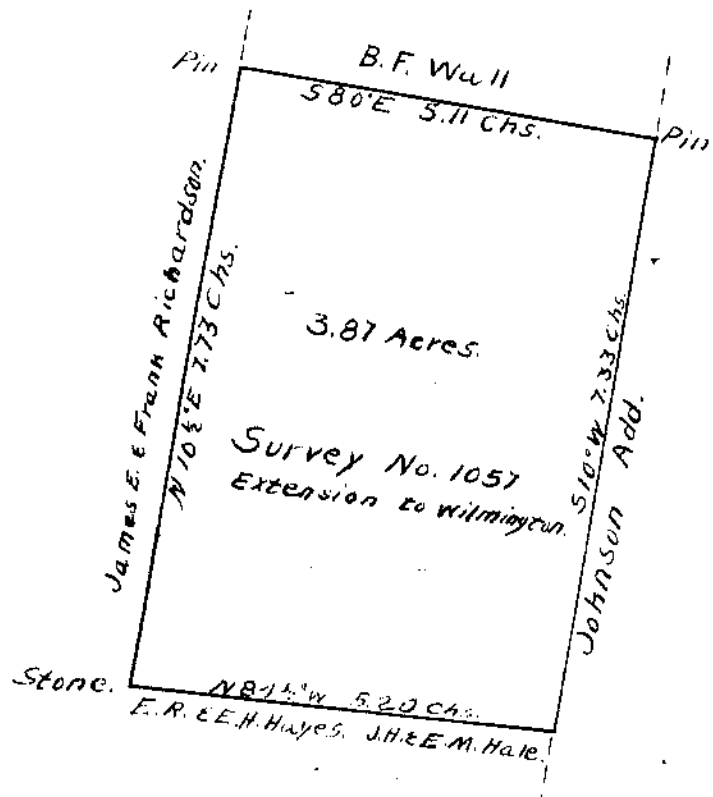
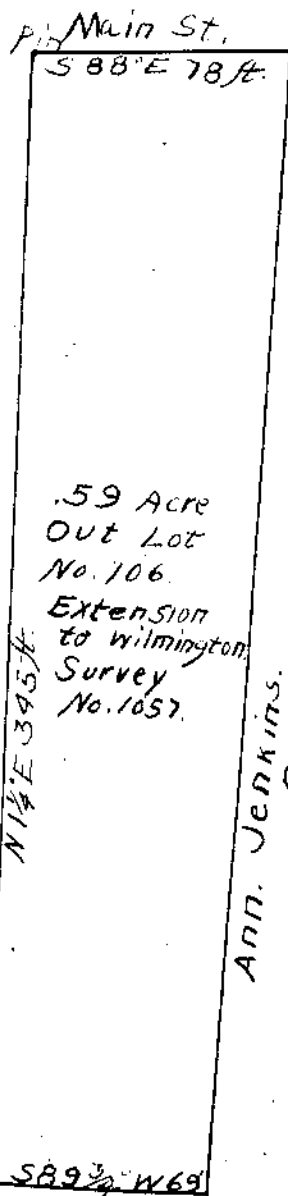


Scale 1 inch = 2 chs.

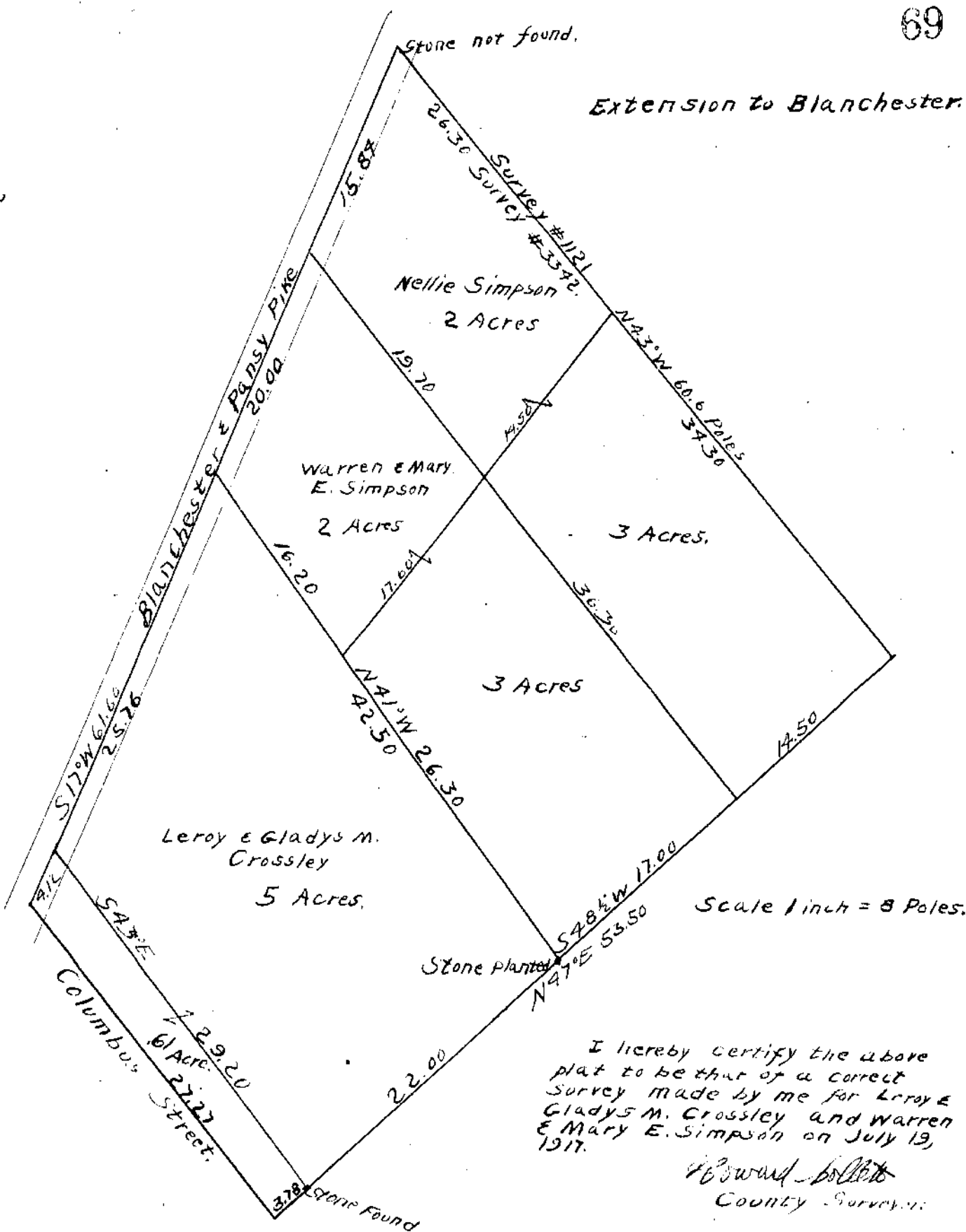


I hereby certify the above plat to be that of a correct survey made by me for B.F. Wall on July 11, 1917.
Howard Collett
County Surveyor.



Scale 1" = 50'

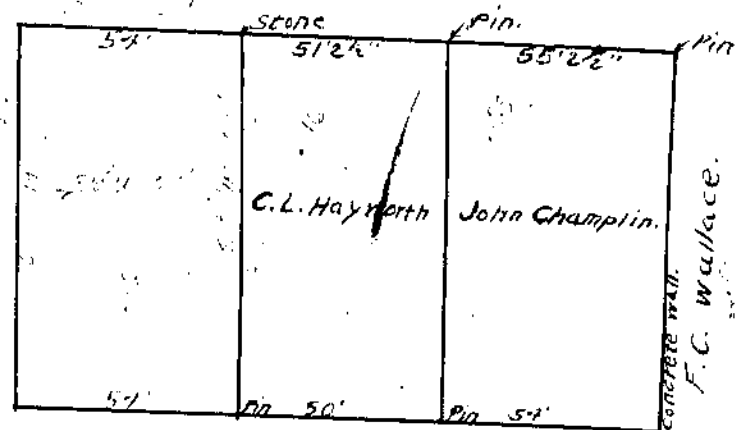
I hereby certify this plat to be that of a correct survey made by me for Amelia Jenkins on July 23, 1917.
Howard Collett
County Surveyor.



Scale 1 inch = 8 Poles.

I hereby certify the above plat to be that of a correct survey made by me for Leroy & Gladys M. Crossley and Warren & Mary E. Simpson on July 19, 1917.

Howard Collett
County Surveyor.



Extension to Wilmington, Survey No. 1057.

I hereby certify the above plat to be that of a correct survey made by me for C.L. Hayworth and John Champlin on August 2, 1917.

Howard Collett
County Surveyor.