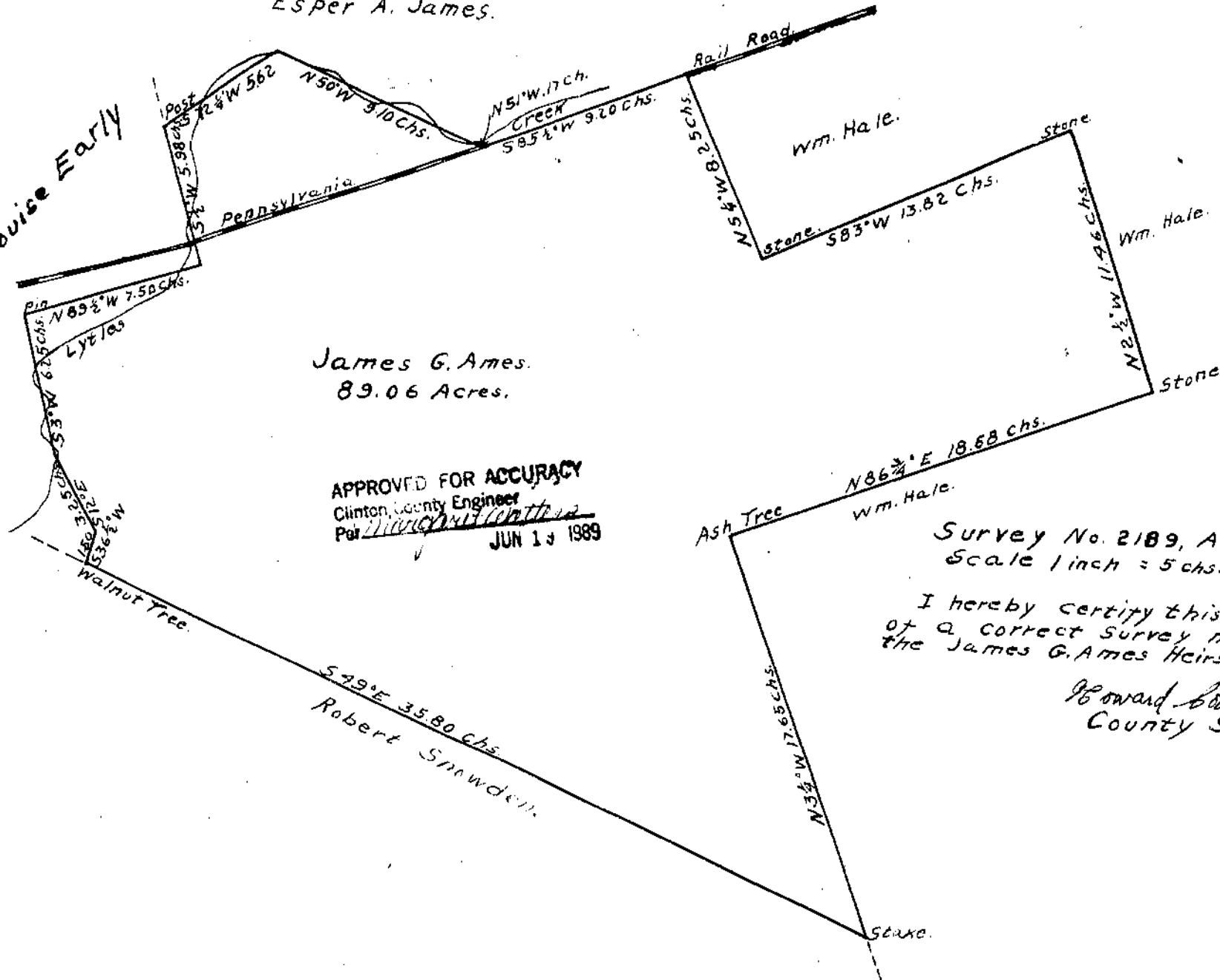


Esper A. James.

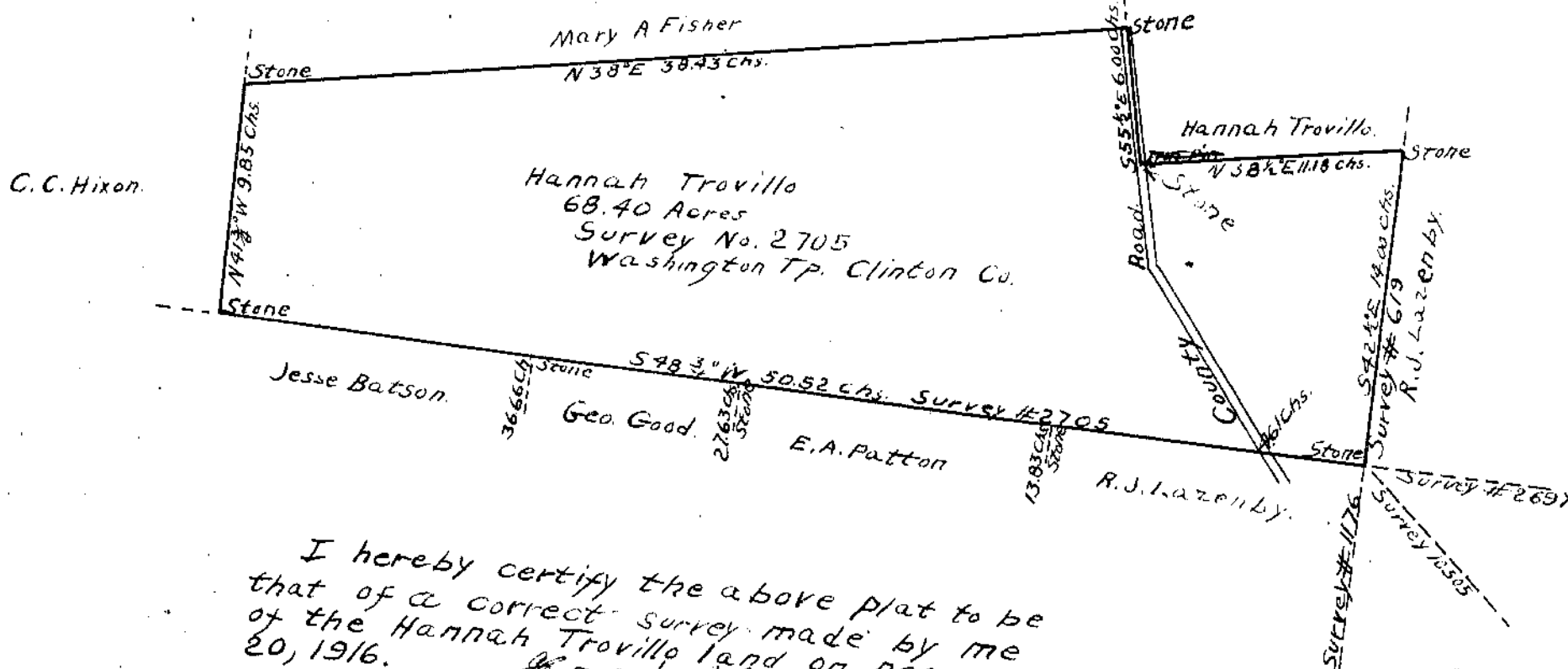
Albert and Louise Early



James G. Ames.
89.06 Acres.

APPROVED FOR ACCURACY
Clinton County Engineer
Par *[Signature]*
JUN 13 1989

Survey No. 2189, Adams Township.
Scale 1 inch = 5 chs. = 20 Rods.
I hereby certify this plat to be that
of a correct survey made by me for
the James G. Ames Heirs on Nov. 3rd, 1916.
Howard Collett
County Surveyor.



I hereby certify the above plat to be
that of a correct survey made by me
of the Hannah Trovillo land on December
20, 1916.
Howard Collett, County Surveyor.

Scale 1 inch = 6 chs.