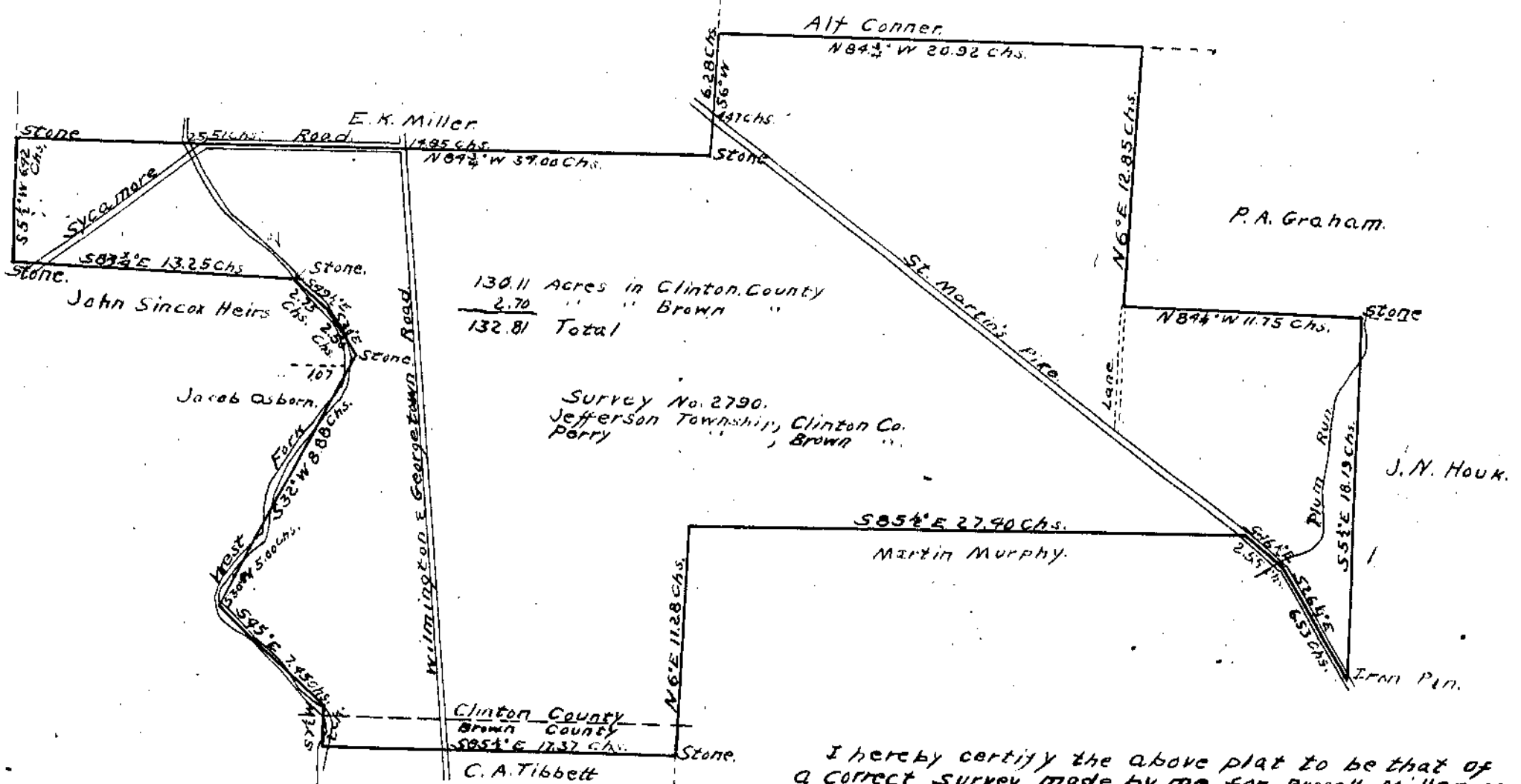


I hereby certify
the above plat to
be that of a correct
survey made by me on
Aug. 29, 1916.

Howard Collette
County Surveyor

Survey 808,
Wayne Township.
Scale 1 inch = 10 chs.

I hereby certify the above
plat to be that of a correct
survey made by me for
William H. Ray on Sept. 15,
1916.
Howard Collette
County Surveyor



130.11 Acres in Clinton County
2.70 " " Brown "
132.81 Total

Survey No. 2790.
Jefferson Township, Clinton Co.
Perry

I hereby certify the above plat to be that of
a correct survey made by me for Russell Miller on
October 12, 1916.

Howard Collette, County Surveyor

Scale 1 inch = 6 chains.