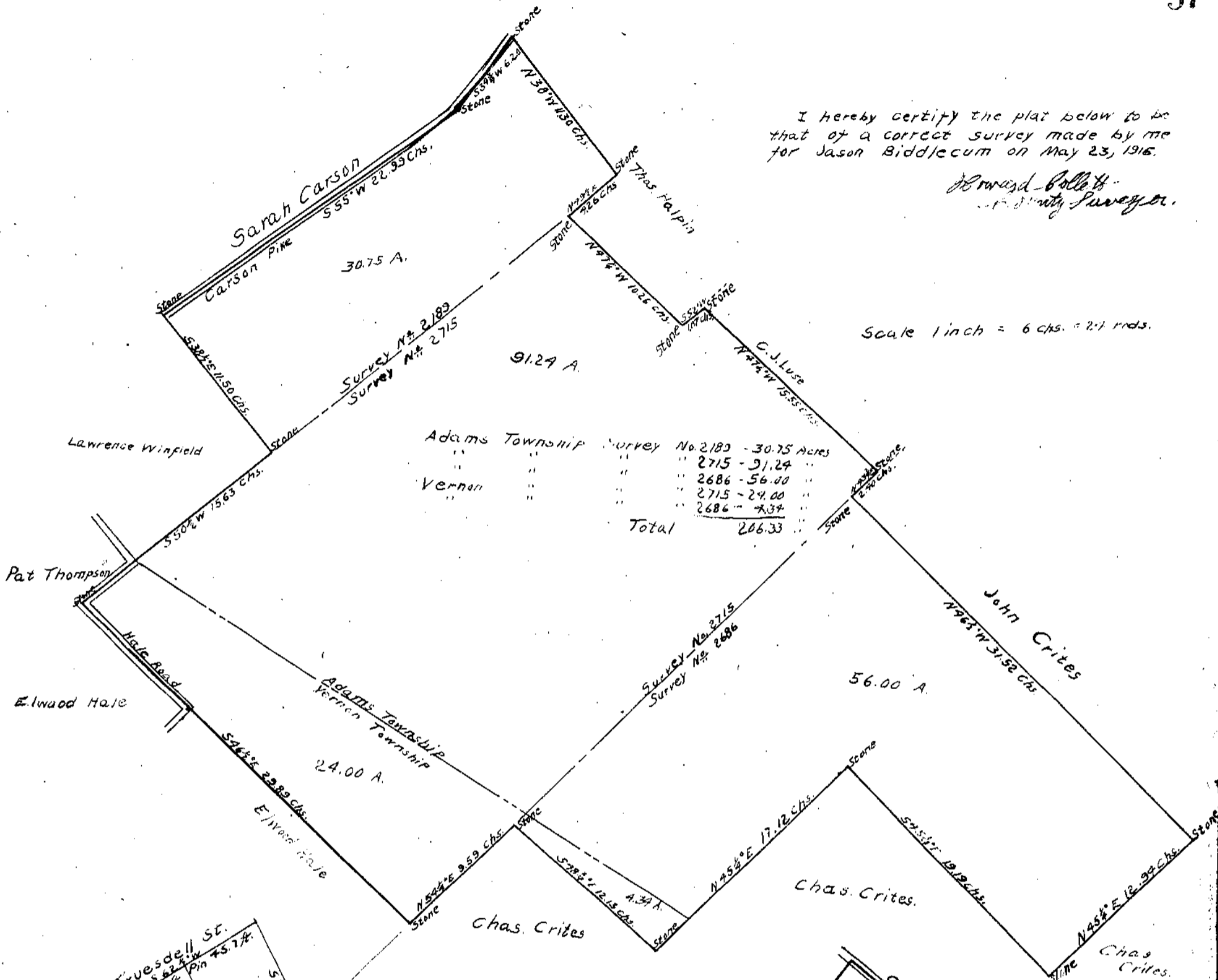


I hereby certify the plat below to be that of a correct survey made by me for Jason Biddlecum on May 23, 1916.

Howard Ballew
County Surveyor.

Scale 1 inch = 6 chs. = 2.1 rods.

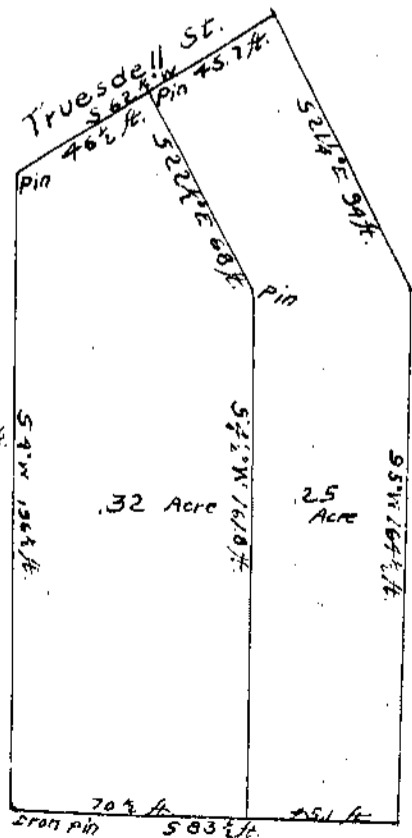


I hereby certify this plat to be that of a correct survey made by me for Lucy Gaskill on July 1, 1916.

Howard Ballew
County Surveyor.

Scale 1 inch = 50 ft.

Out lot #93 of the extension of Wilmington Survey 1057.



Scale 1" = 2 chs.

I hereby certify the above plat to be that of a correct survey made by me for H.J. Lundy on Oct. 24, 1916.
Howard Ballew
County Surveyor.

