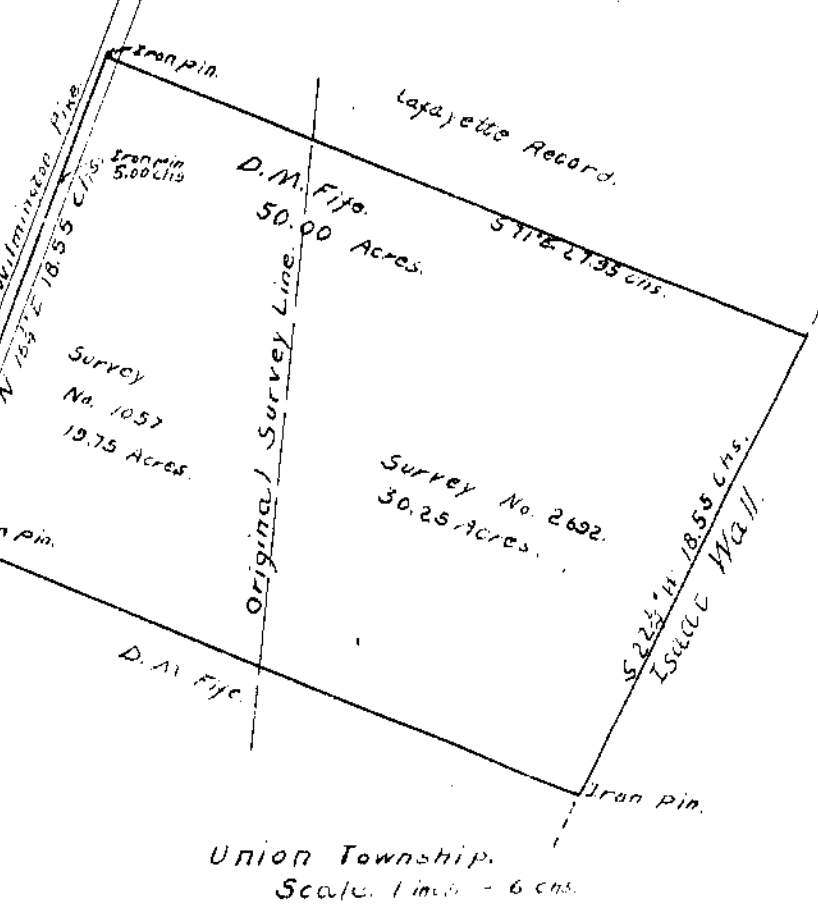


H.L. Jones
50.00 Acres in Chester Tp.
75.38 " " Adams Tp.
125.38 " Total.

Survey #2371
Clinton Co.
Ohio.

Scale 1 inch = 6 chs.



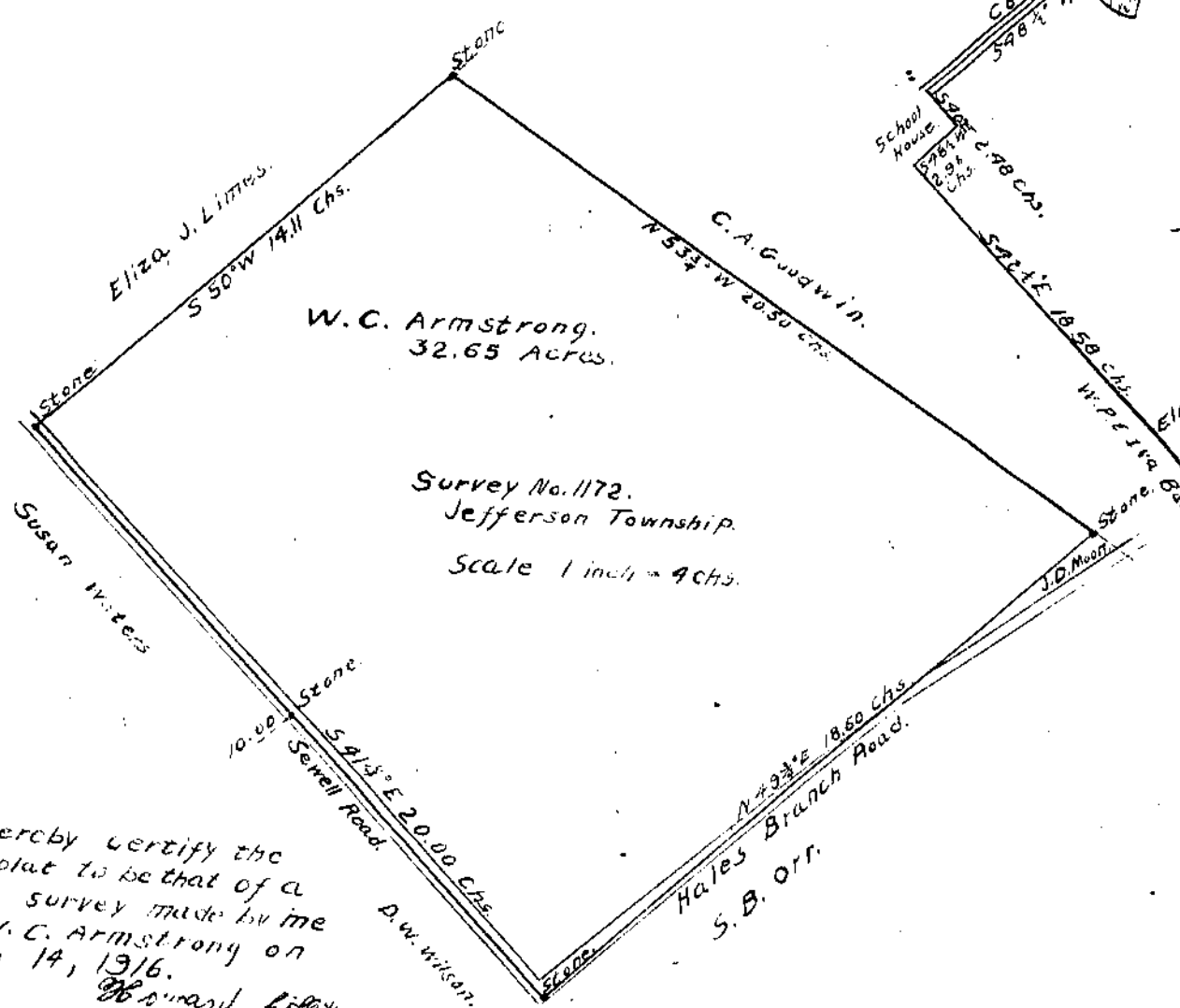
D.M. Fife
50.00 Acres

Survey No. 2692
30.25 Acres

Union Township
Scale 1 inch = 6 chs.

I hereby certify the above is a correct plat of a survey made by me for D.M. Fife, on March 30, 1916. Howard Collett, Dep. Co. Sur.

I hereby certify the above plat to be that of a correct survey made by me for H.L. Jones on March 6, 1916. Howard Collett, Deputy County Surveyor.



W.C. Armstrong
32.65 Acres

Survey No. 1172
Jefferson Township

Scale 1 inch = 9 chs.

Isaiah Hildebrant
121.16 Acres in Survey # 1458
50 " " Grave yard.
120.66 " " Survey # 1367
16.00 " " Survey # 1367
136.66 " Total.

I hereby certify the above plat to be that of a correct survey of the Isaiah Hildebrant Land made by me on April 22, 1916. Howard Collett, Dep. Co. Sur.

I hereby certify the above plat to be that of a correct survey made by me for W.C. Armstrong on March 14, 1916. Howard Collett, Deputy County Surveyor.