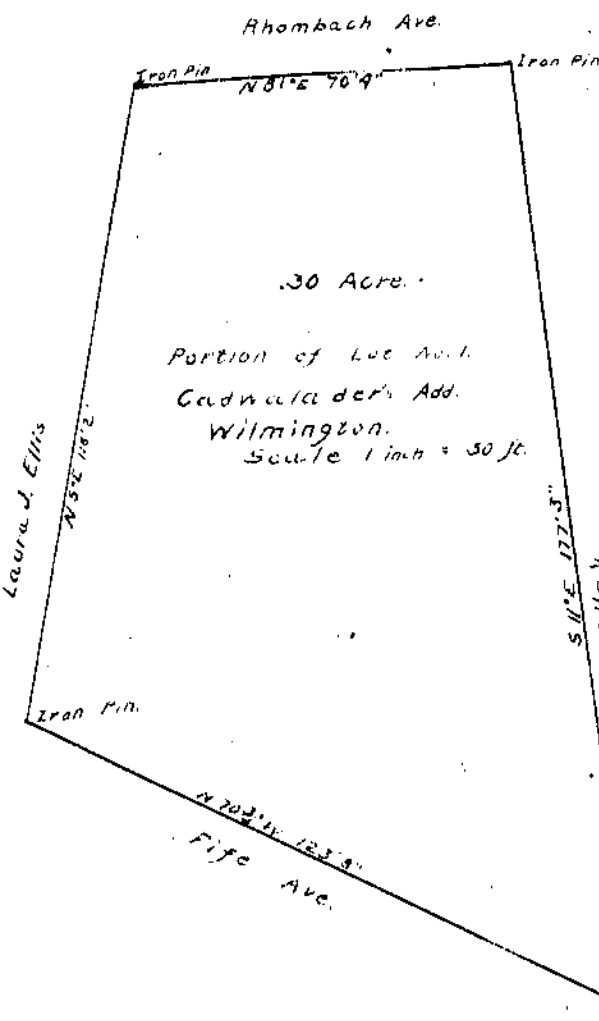
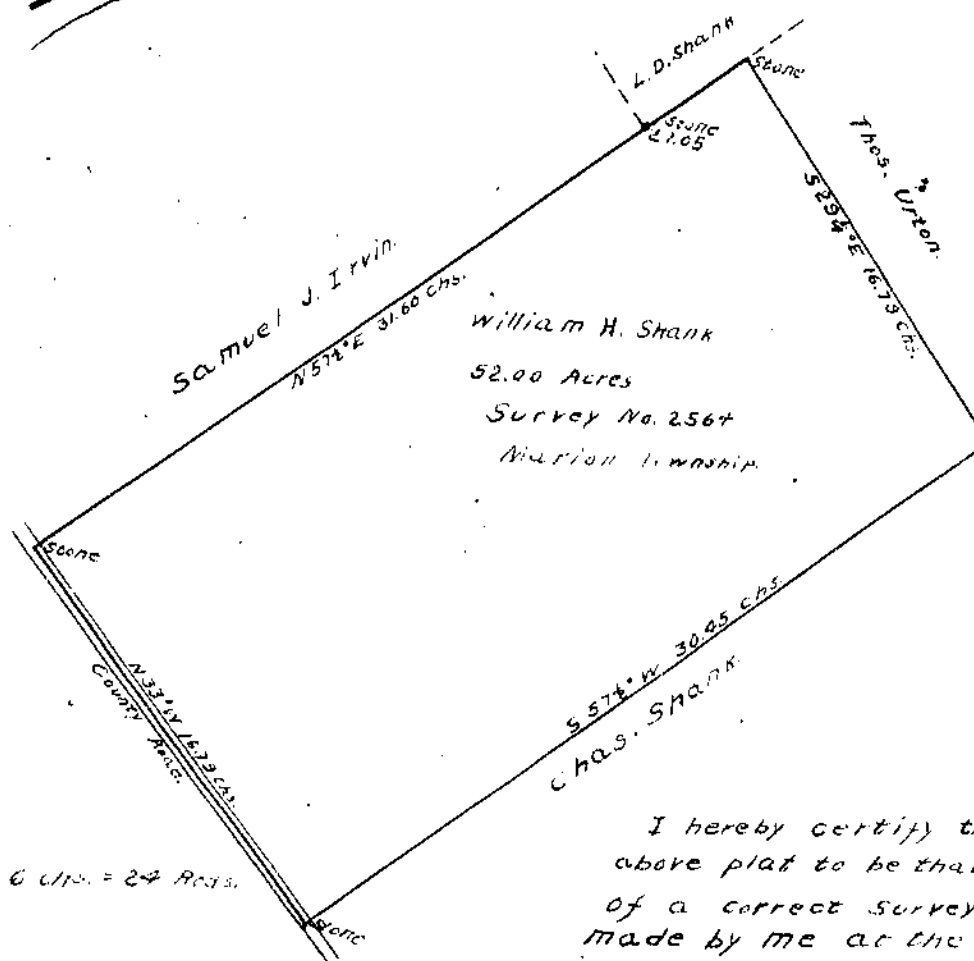


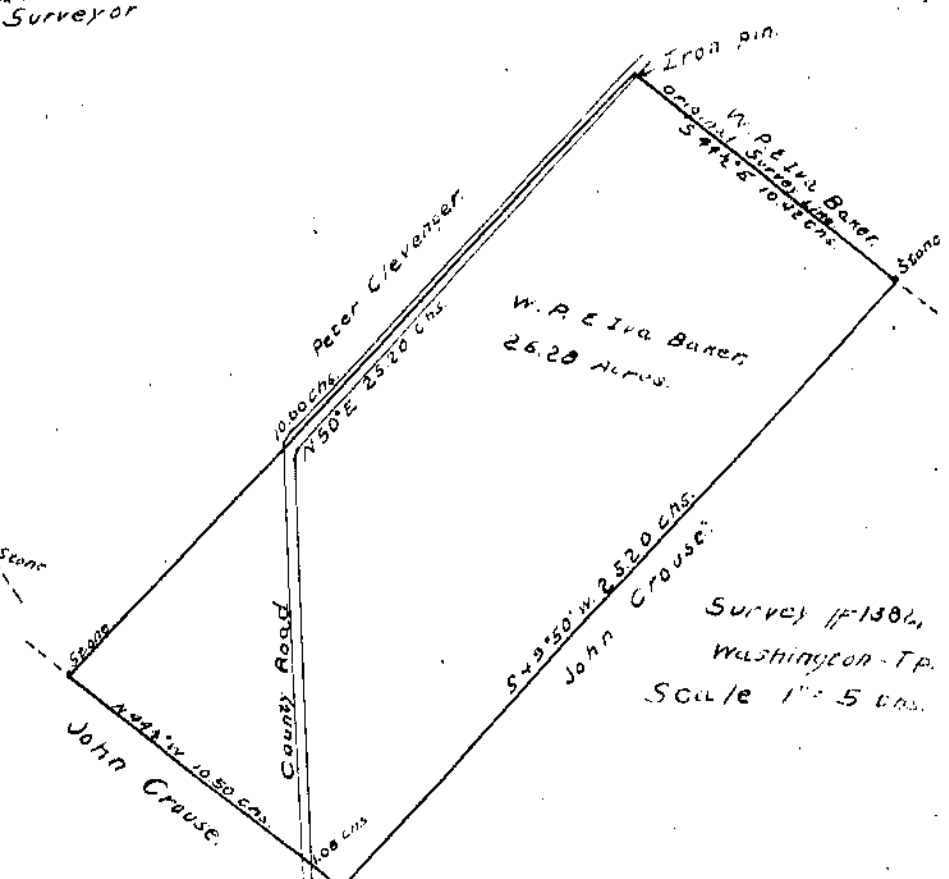
I hereby certify the above plat to be that of a correct survey made by me for Mary E. Early on Feb. 17, 1916.
Howard Collett
 Deputy County Surveyor



I hereby certify this plat to be that of a correct survey made by me for Elizabeth W. Miller Hildebrandt on Feb. 26, 1916.
Howard Collett
 Dep. Co. Sur.



I hereby certify the above plat to be that of a correct survey made by me at the instance of W.H. Shank on February 28, 1916.
Howard Collett
 Deputy County Surveyor



I hereby certify the above plat to be that of a correct survey made by me for W.P. & Iva Baker on March 28, 1916.
Howard Collett
 Deputy County Surveyor

Scale 1 inch = 6 chs. = 24 Ads.