

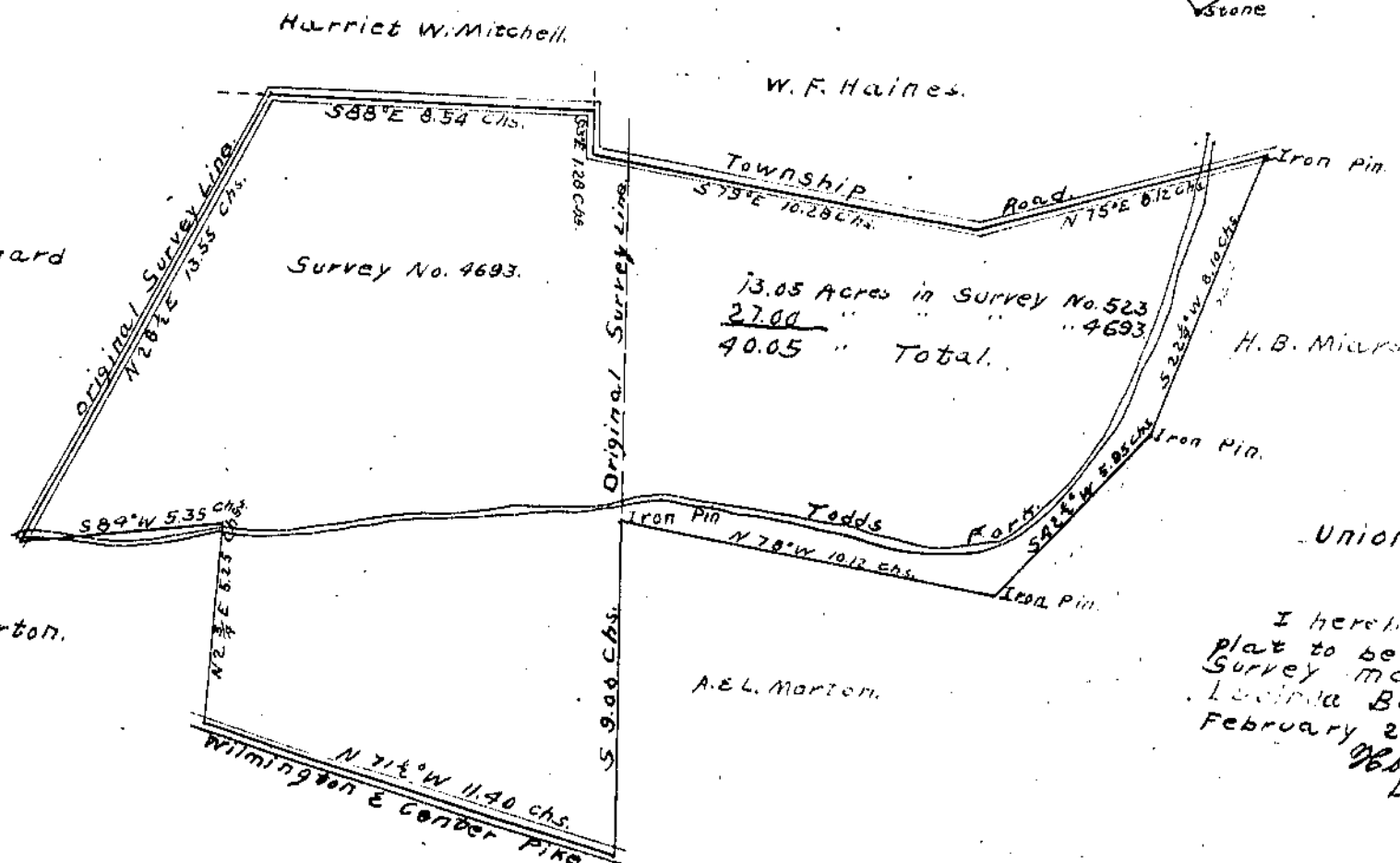
Scale 1 inch = 20 Poles.

Survey 766  
Richland Tp.

Joseph Sheridan

Surveyed by  
T.M. Bates.  
Jan 15, 1916.

Scale 1 inch = 8 chs. = 32 Rods.  
 I hereby certify the above  
 plat to be that of a correct survey  
 made by me for W. J. Barlow  
 Heirs on Feb. 1, 1916.  
 Edward Ballard,  
 Deputy County Surveyor.



Union Township, Clinton Co., N.Y.  
Scale 1 inch = 4 chs = 16 rods.

I hereby certify the above  
 plat to be that of a correct  
 survey made by me of the  
 Lucinda Ballard land on  
 February 22 & 23, 1916.  
 Edward Ballard,  
 Deputy County Surveyor.