

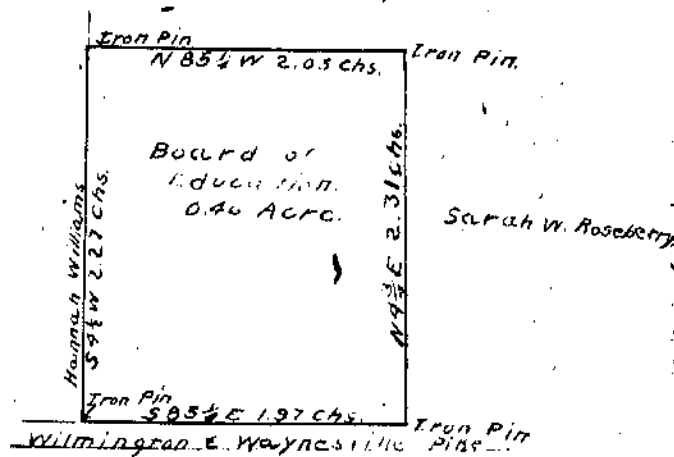
Survey No. 986
2453
Union Township,
Clinton County,
Ohio.

Scale, 1 inch = Chs. = 24 Rods.

I hereby certify the above plat
to be that of a correct Survey made
by me for Lewis & Orville L. Wall
on January 21, 1916.

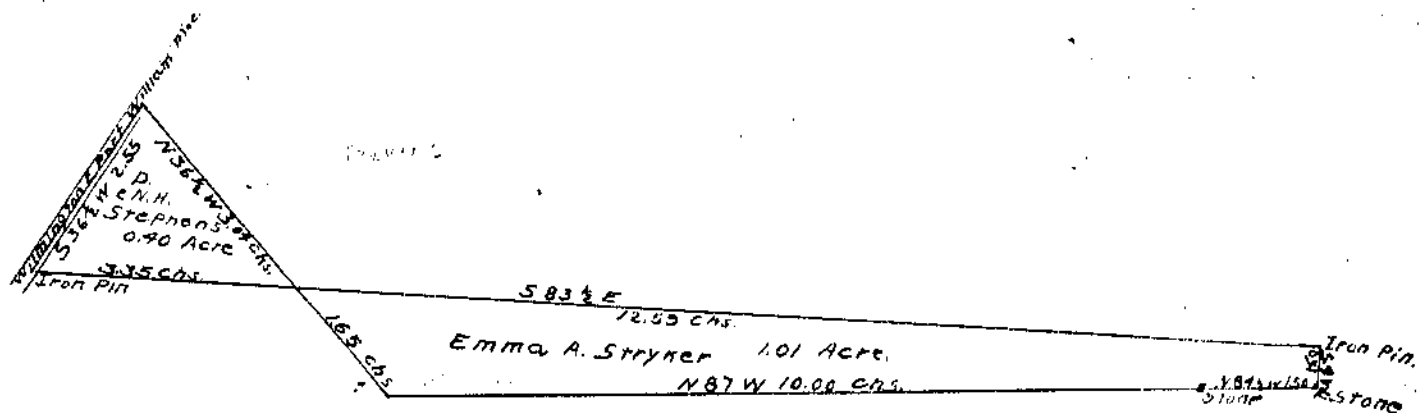
Howard Collett
Deputy County Surveyor.

Sarah W. Roseberry



Oakland, Survey # 2230,
Chester Township, Clinton County, Ohio.
Scale 1 inch = 1 ch. = 4 rods.

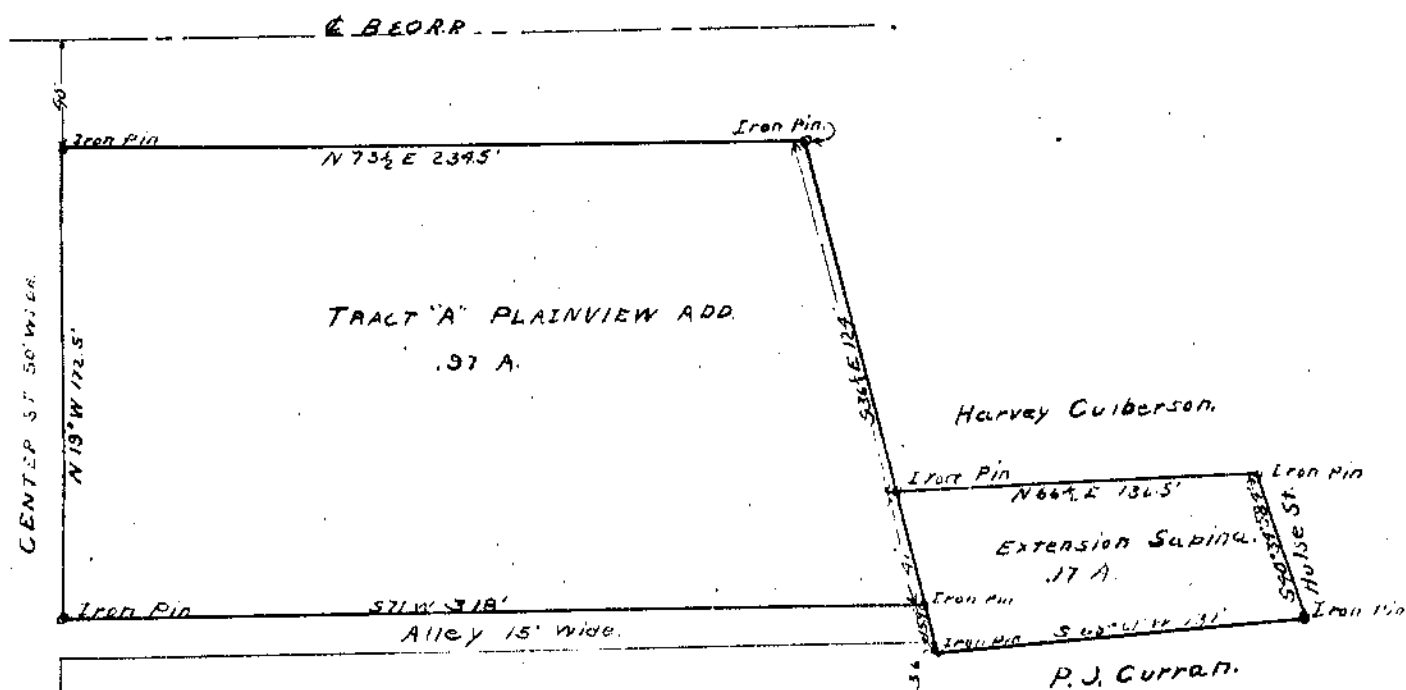
I hereby certify the above plat
to be that of a correct Survey made
by me for Board of Education of
Chester Township, on January 27, 1916.
Howard Collett
Deputy County Surveyor.



Scale 1 inch = 2 Chs. = 8 rods
Survey # 2079, Liberty Township
Clinton County, Ohio.

I hereby certify the above plat to be that of a
correct survey made by me for Emma A. Stryker and
D. E. N. H. Stephens on January 25, 1916.

Howard Collett
Deputy County Surveyor.



Plat of a tract of land in
Subdiv. O. Survey # 766 belonging
to the Standard Oil Co.
Surveyed by E. H. Trickey, Co. Surveyor.
Jan. 24, 1916.

Scale 1" = 60'