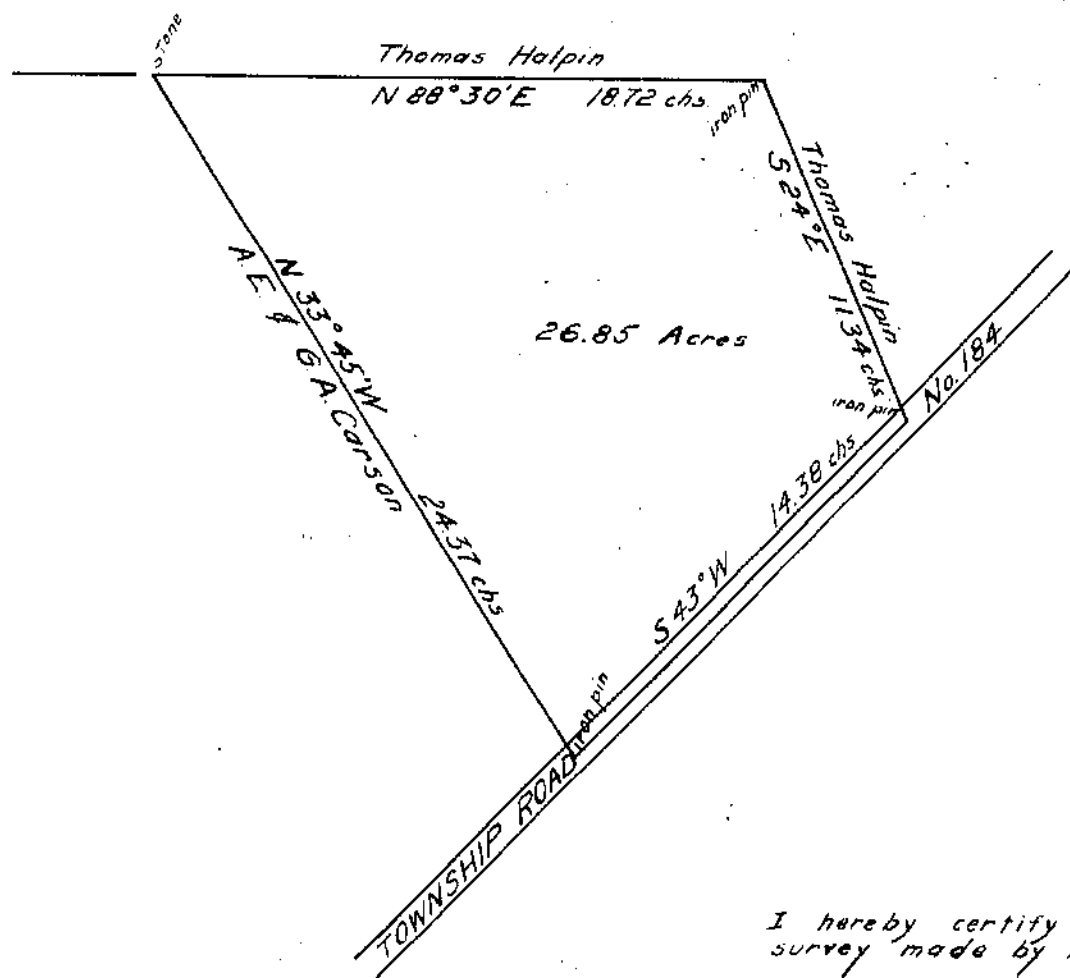


DWIGHT BABB
 LOTS 8, 9, 10, & 11
 COLLEGE PARK ADD.
 LEE'S CREEK, OHIO
 SCALE: 1 inch = 40'

I hereby certify this to be a correct
 plat of a survey made by me on September 4, 1941

[Signature]
 County Engineer



C T HALPIN

Survey Number 2189
 Adams Township
 Clinton County, Ohio
 Scale: 1 inch = 5 chs

I hereby certify this to be a correct plat of a
 survey made by me on August 21, 1941

[Signature]
 County Engineer