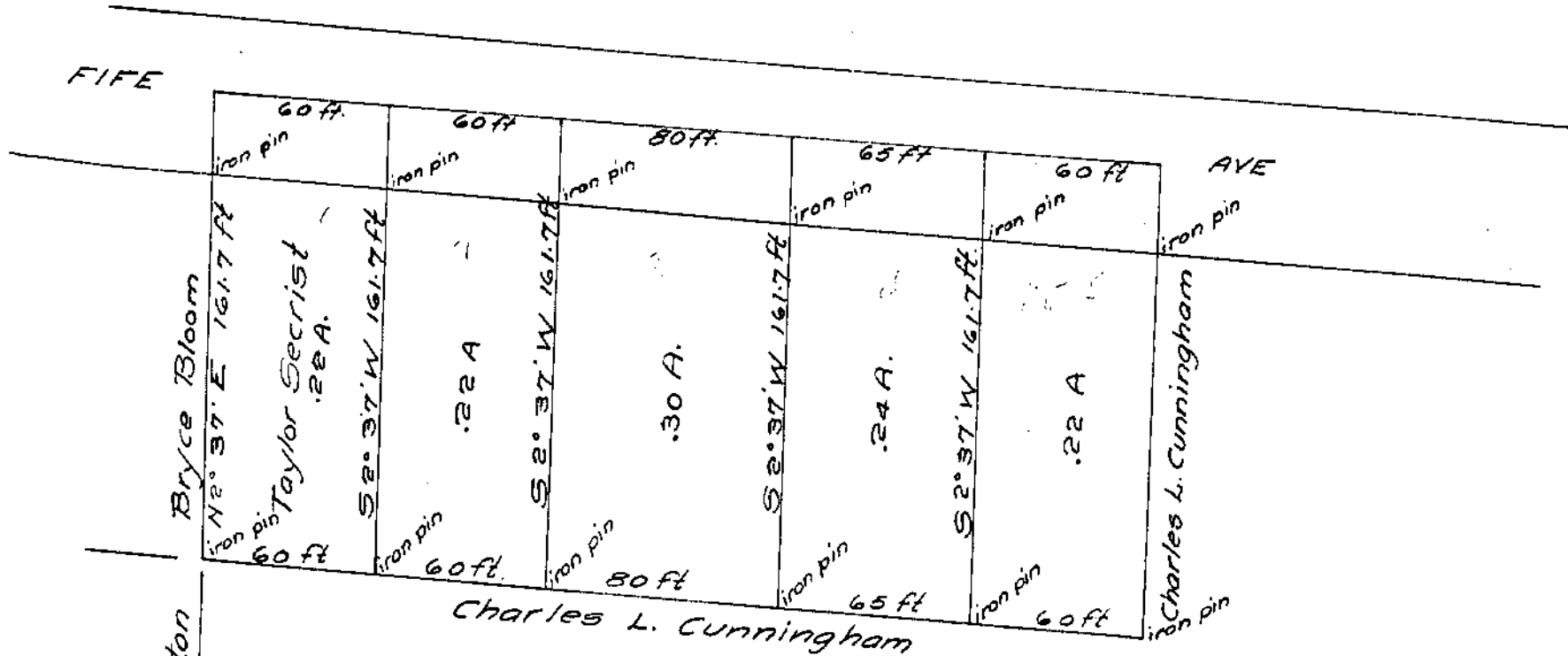


ELON FARREN
Wayne Twp., Clinton Co.,
Concord Twp., Fayette Co.,
Ohio.

Scale: 1 in. = 10 chs.
1 ch. = 4 rds.

I hereby certify this to be a correct plat
of a survey made by me on May 3, 1941.

J. B. Hargnes
County Engineer



CHARLES L. CUNNINGHAM PART OF O.L. 26.
Survey No. 2690; Extension to Wilmington,
Clinton County,
Ohio.

Scale: 1 in. = 50 ft.

I hereby certify the above to be a correct plat of a survey made
by me on May 20, 1941.

J. B. Hargnes
County Engineer.