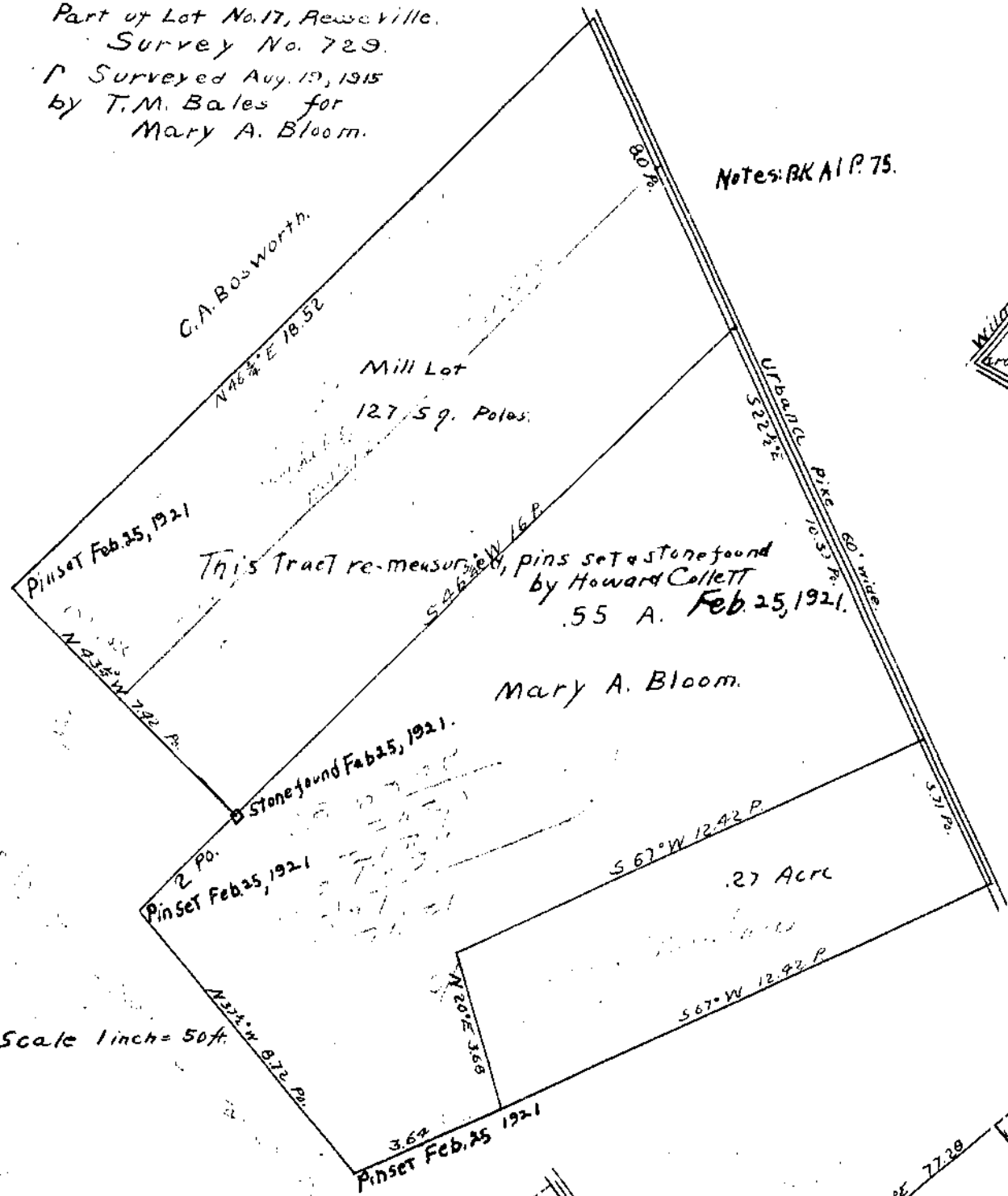


Part of Lot No. 17, Newsville.
Survey No. 729.
Surveyed Aug. 19, 1915
by T.M. Bales for
Mary A. Bloom.

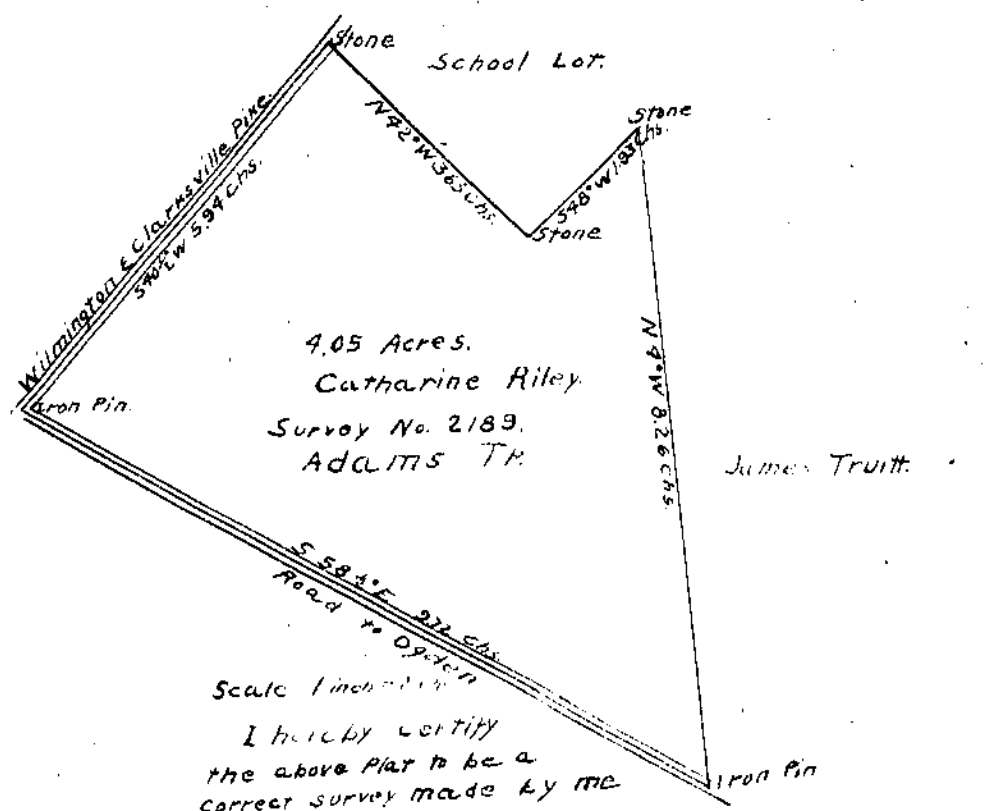


Notes: BK A I P. 75.

This tract re-measured, pins set a stone found by Howard Collett
55 A. Feb. 25, 1921.

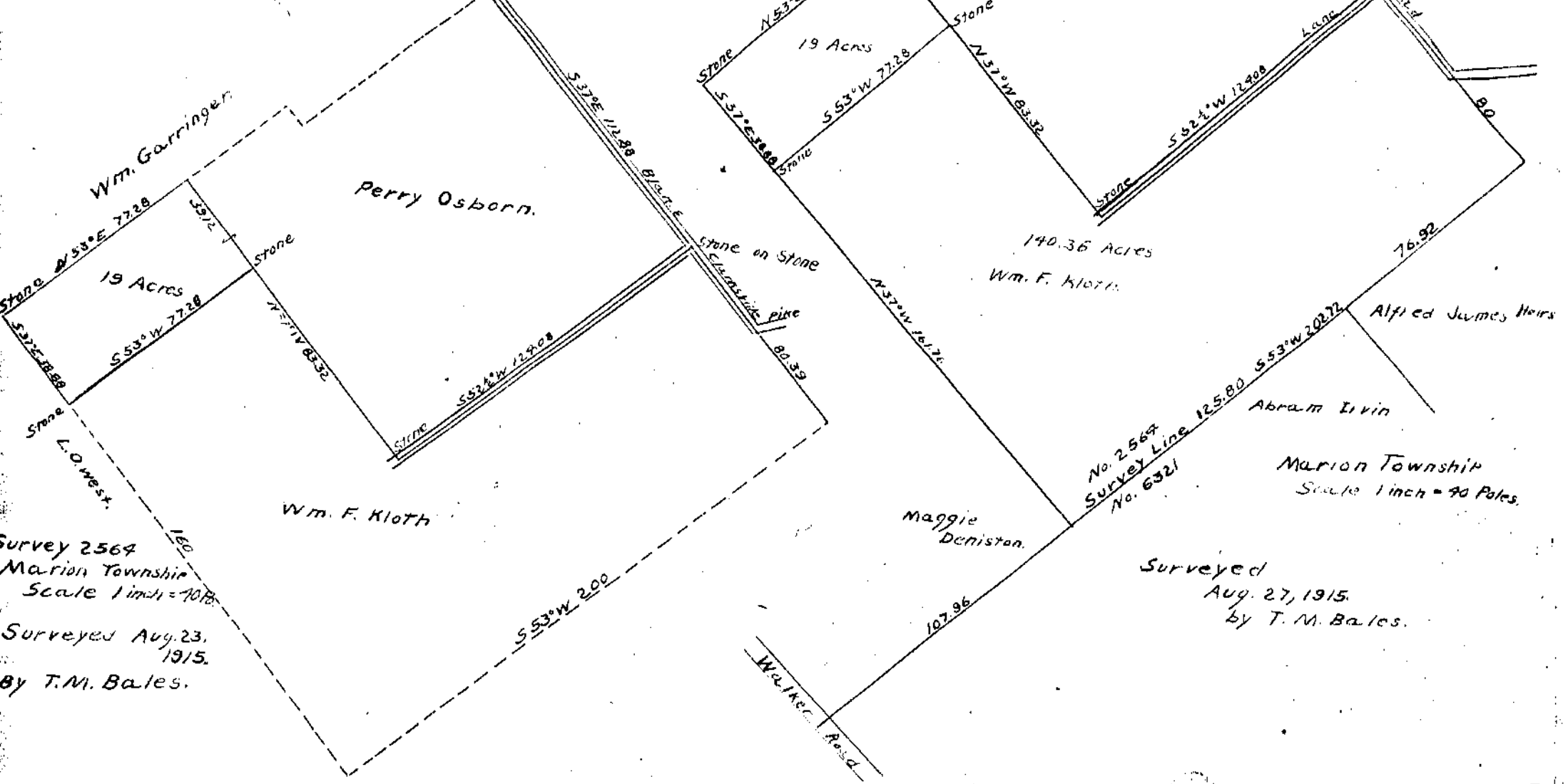
Mary A. Bloom.

Scale 1 inch = 50 ft.



Scale 1 inch = 100 ft.

I hereby certify
the above plat to be a
correct survey made by me
on May 18, 1915.
Howard Collett
D.P. Ca. Sur.



Survey 2564
Marion Township
Scale 1 inch = 100 ft.
Surveyed Aug. 23,
1915.
By T.M. Bales.

No. 2564
Survey Line 125.80
No. 6321
Abram Irvin
Marion Township
Scale 1 inch = 90 Poles.

Surveyed
Aug. 27, 1915.
by T.M. Bales.