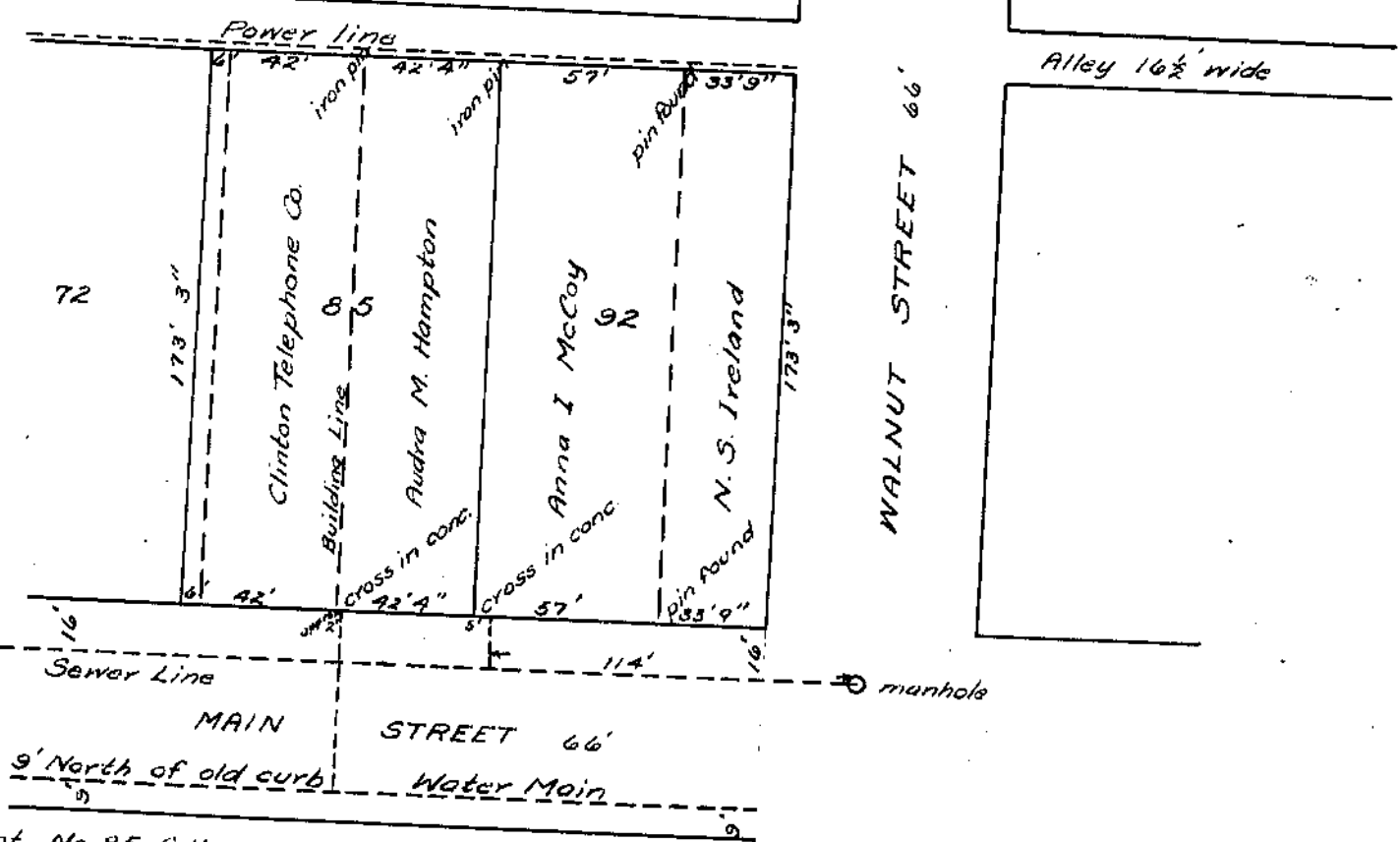


I hereby certify the above to be a correct
 plat of a Survey made by me on Aug. 17, 1940

County Engineer



Lot No. 85 falls short
 of original measurements
 5 inches, front & rear

I hereby certify the above to be a correct plat
 of a Survey made by me on Aug. 26, 1940

County Engr.
 [Signature]

AUDRA M. HAMPTON
 Part of Lot No. 85
 Original Town Plat
 Wilmington
 Ohio
 Scale: 1 inch = 50'
 M.D. 1057