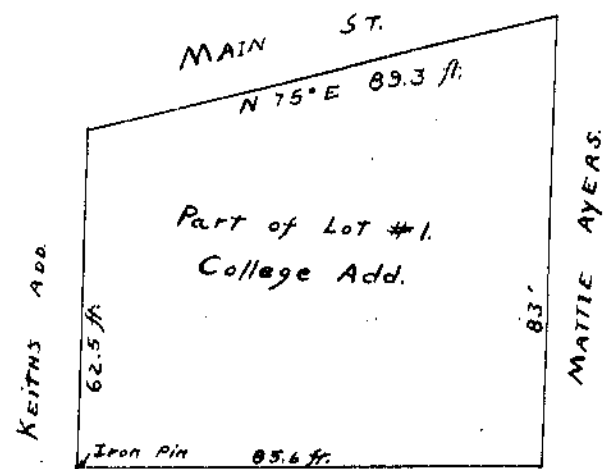
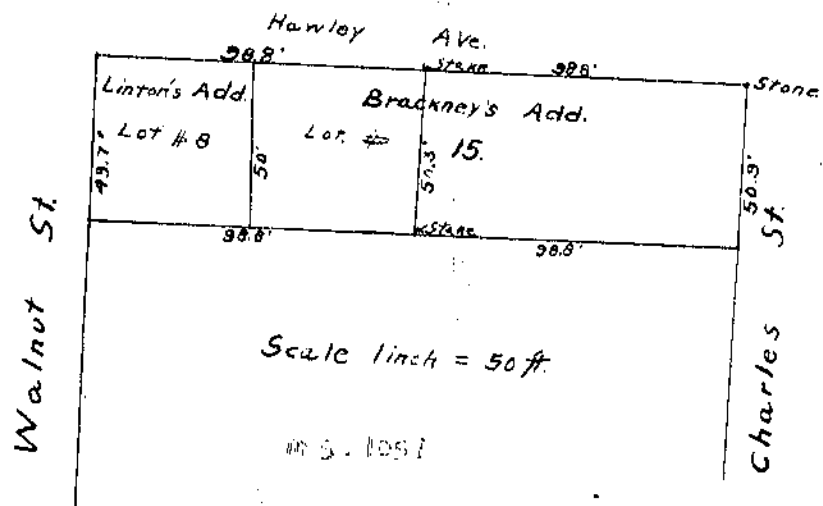


LOCUST ST.

I hereby certify that the above is a correct plat of a survey made by me at the instance of W.B. Van Pelt.
(Signature)



Wilmington.
 I hereby certify the above plat to be that of a correct survey made by me for Brent Mc. Coy on Apr. 21, 1915

Howard Bollett
 Deputy Co. Sur.

I hereby certify the above plat to be that of a correct survey made by me for Emma and Ella Hoover on Sept. 28, 1915.

(Signature)