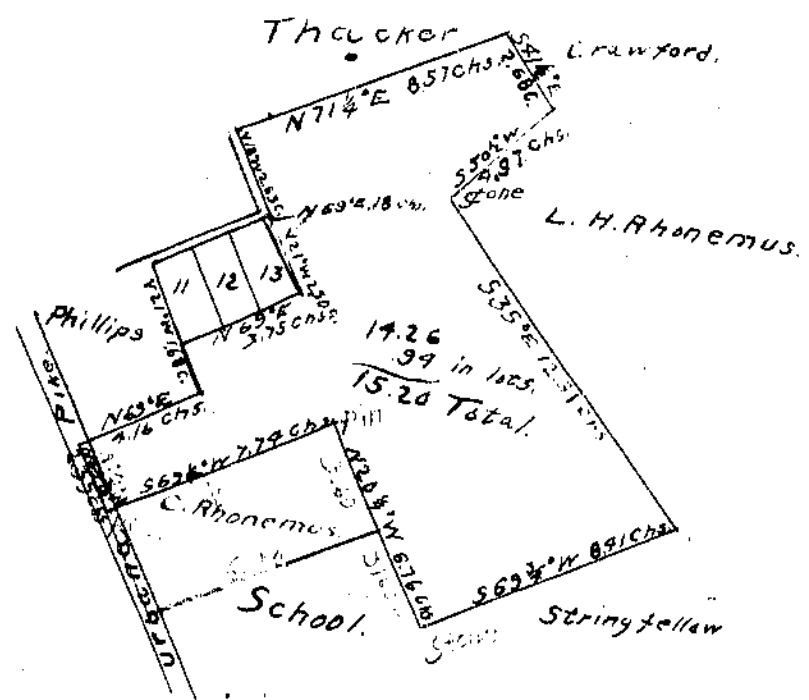


Survey No. 2371
Adams TP.

12.55 Acres.

I hereby certify that the above is a correct plat of a survey made by me this 28th day of March 1914 at the instance of A.L. Seaman.

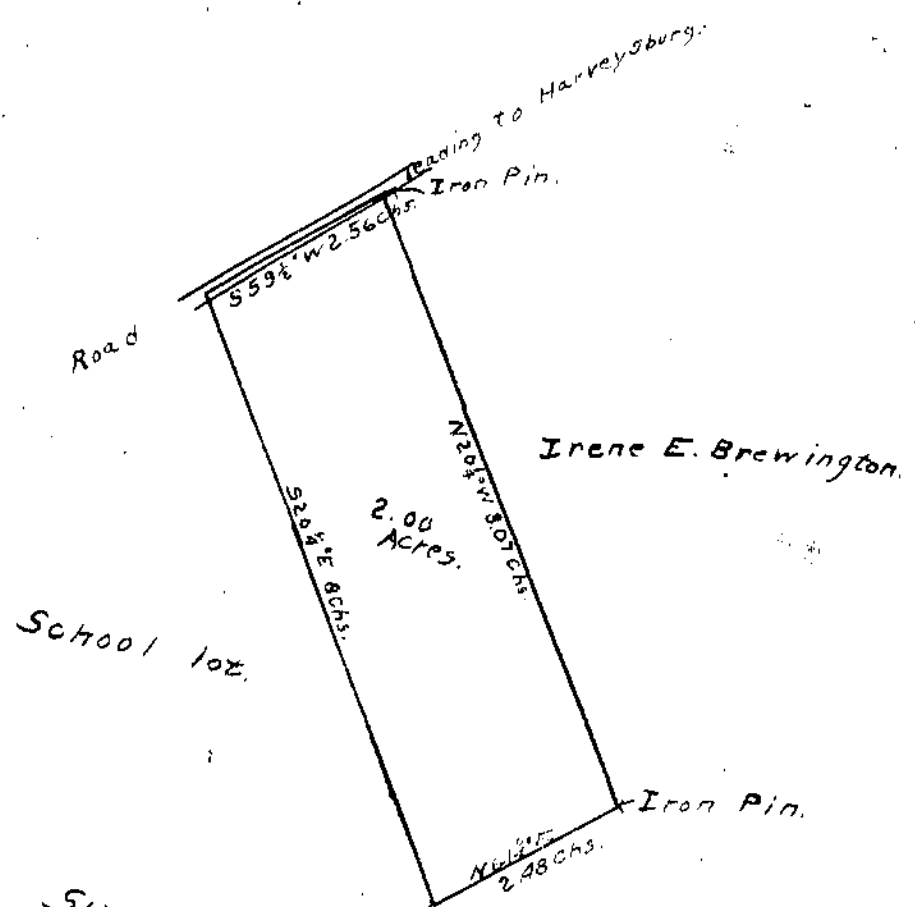
Howard Collett



Reeseville,
Richland
Township,
Survey
No. 729.

I hereby certify the above to be a correct plat of a survey made by me on the 6th day of March 1914, at the instance of C. Rhonemus.

Howard Collett



Survey No. 2231, North Linneman, Chester TP.
I hereby certify the above plat to be a correct one of a survey made by me at the instance of Irene E. Brewington this 26th day of Jan. 1915.

Howard Collett