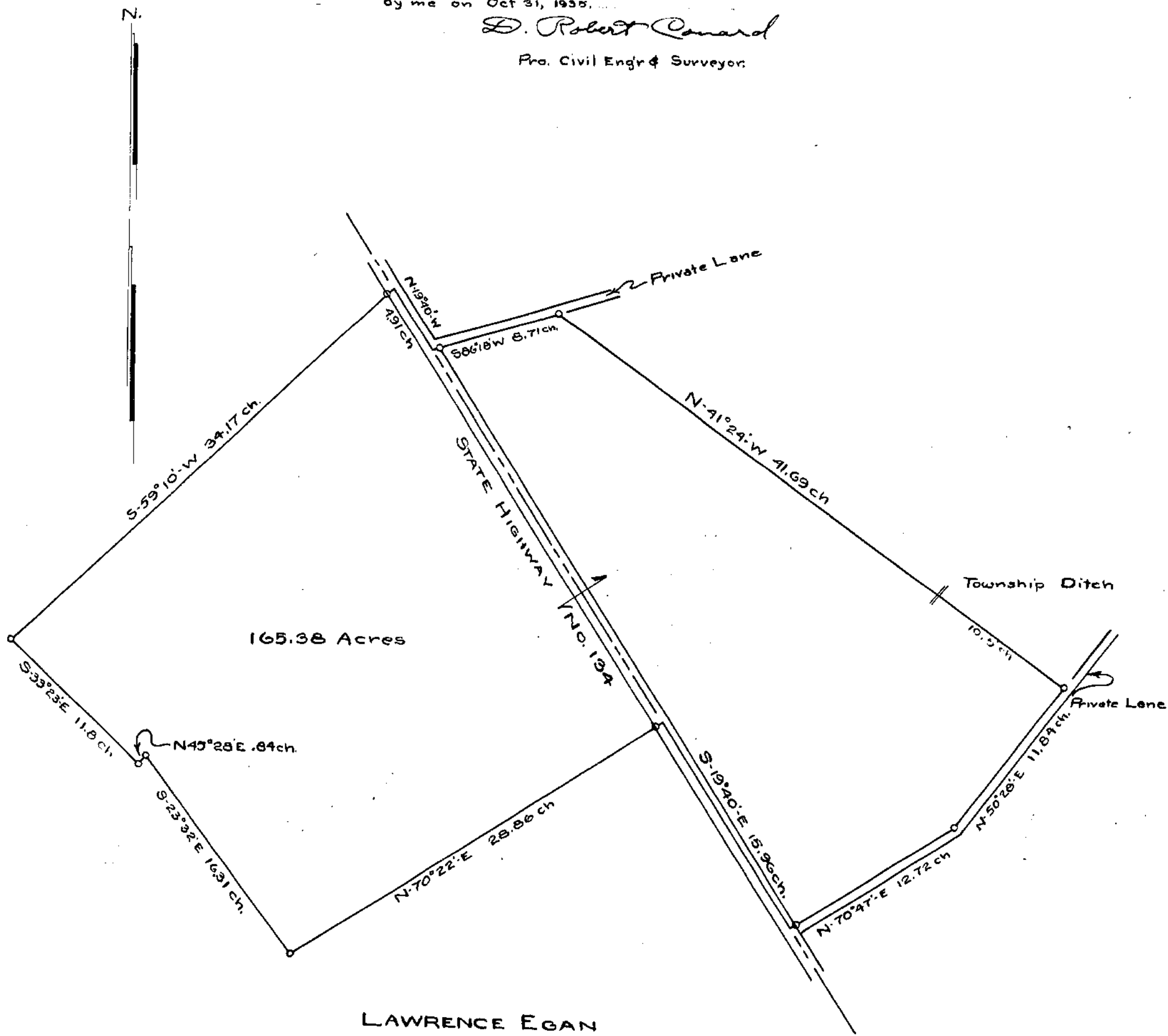


I hereby certify this to be  
a correct of a survey made  
by me on Oct 31, 1935.

*D. Robert Conard*

Pro. Civil Engr & Surveyor



165.38 Acres

LAWRENCE EGAN  
Survey No's 2694 & 625  
Union Township  
Clinton County, Ohio.  
Scale 1" = 6 ch.