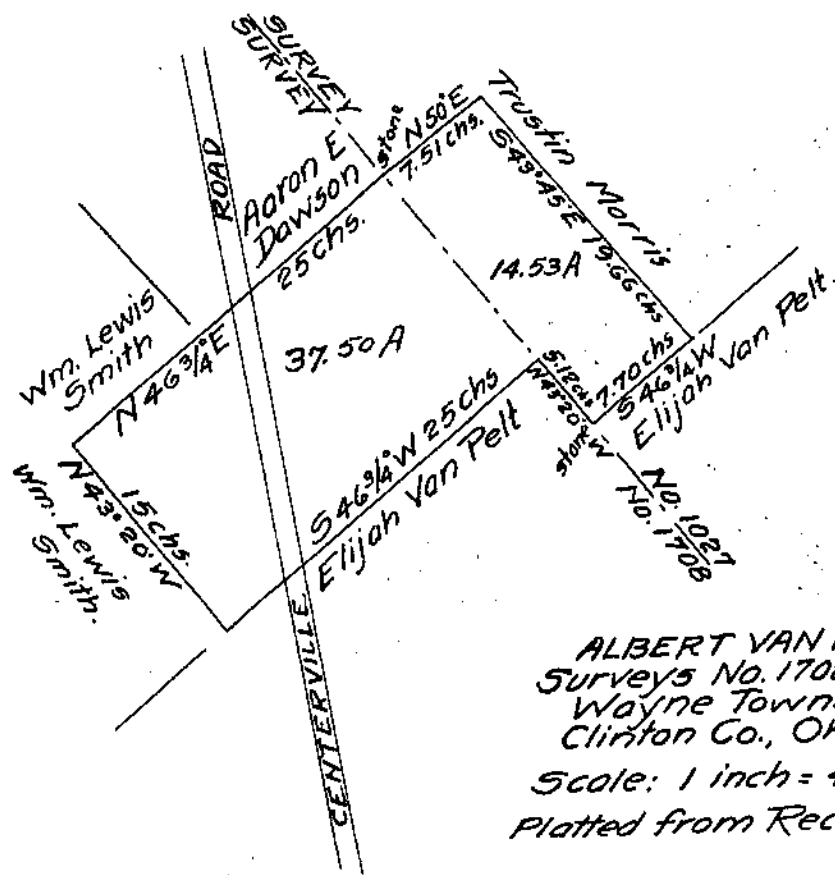


JAMES E. JOHNSON
 Survey No. 2564
 Marion Township,
 Clinton Co., Ohio
 Scale: 1 inch = 2 chs.
 1 ch. = 4 rds.

I hereby certify the above to be a correct plot of a survey made by me on Feb. 27, 1930.

Howard Colles
 County Surveyor



ALBERT VAN PELT
 Surveys No. 1708 and 1027
 Wayne Township,
 Clinton Co., Ohio
 Scale: 1 inch = 40 rds = 10 chs
 Platted from Records