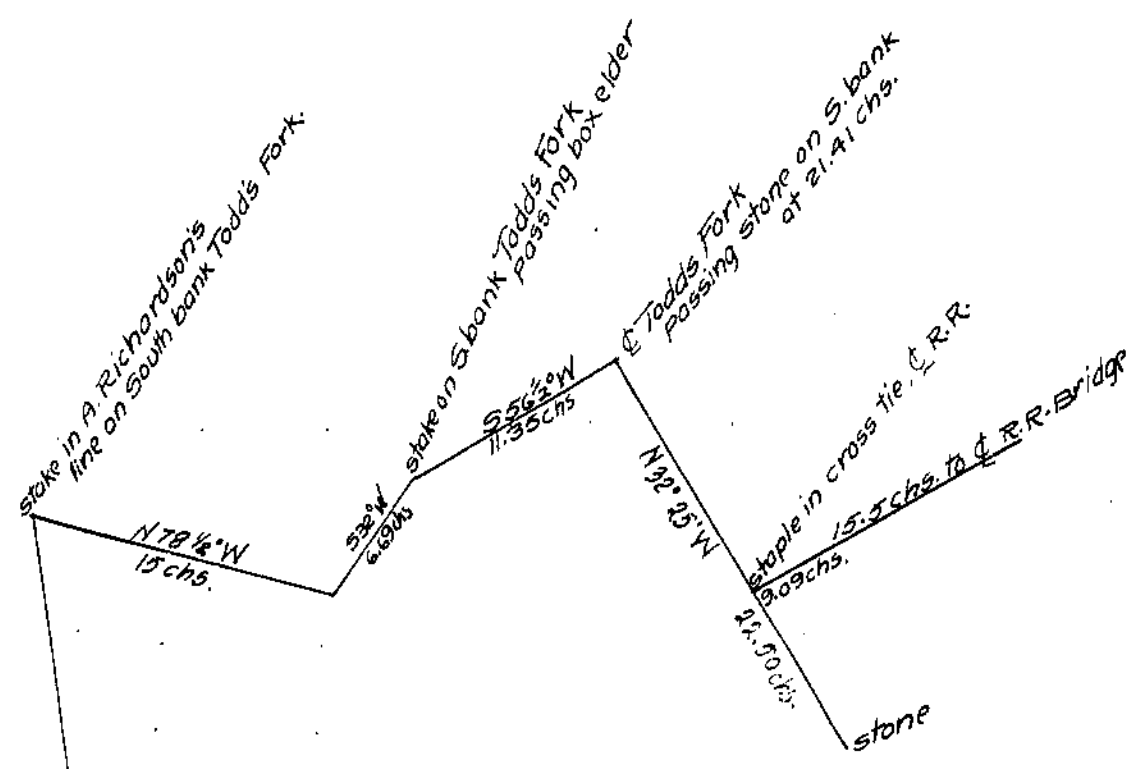


MT. VERNON OR GREASY HILL SCHOOL.  
 Surveys No. 2705 and 2706  
 Vernon Township,  
 Clinton Co., Ohio.  
 Scale: 1 inch = 2 chs = 8 rds.

I hereby certify the above to be a correct plat  
 of a survey made by me on August 1, 1929.

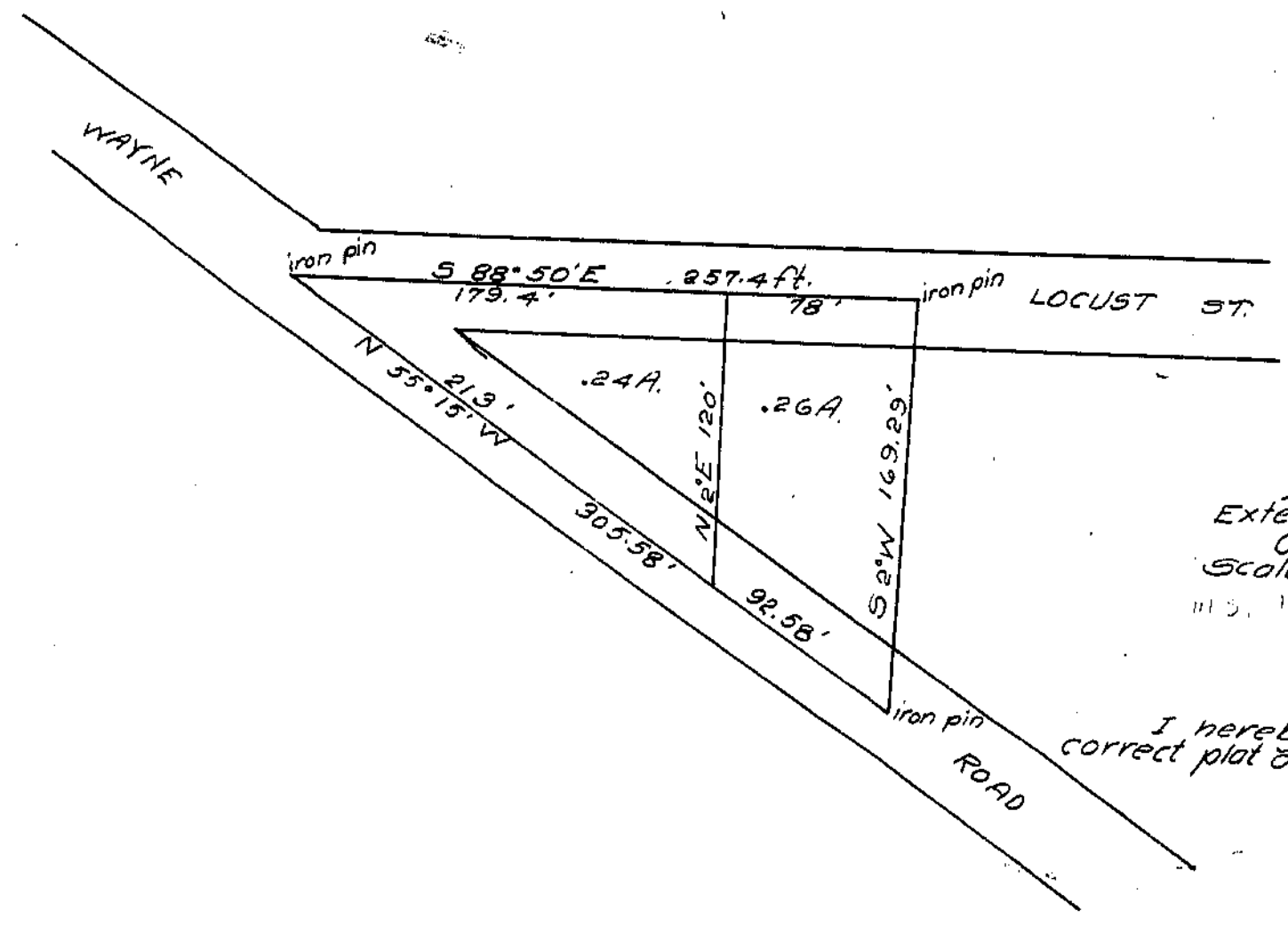
*Howard Collett*  
 County Surveyor



TILDEN and JENNIE OSBORN  
 SURVEY NO. 1507.  
 Vernon Township,  
 Clinton County, Ohio.  
 Scale 1 inch = 8 chs. = 32 rds.

I hereby certify the above to be a correct plat  
 of a survey made by me on Aug. 7, 1929.

*Howard Collett*  
 county surveyor.



DALLAS CAREY  
 Extension to Wilmington  
 Clinton Co., Ohio  
 Scale: 1 inch = 60 ft.  
 11 5, 11 57

I hereby certify the above to be a  
 correct plat of a survey made by me on Sept. 11, 1929.

*Howard Collett*  
 county surveyor