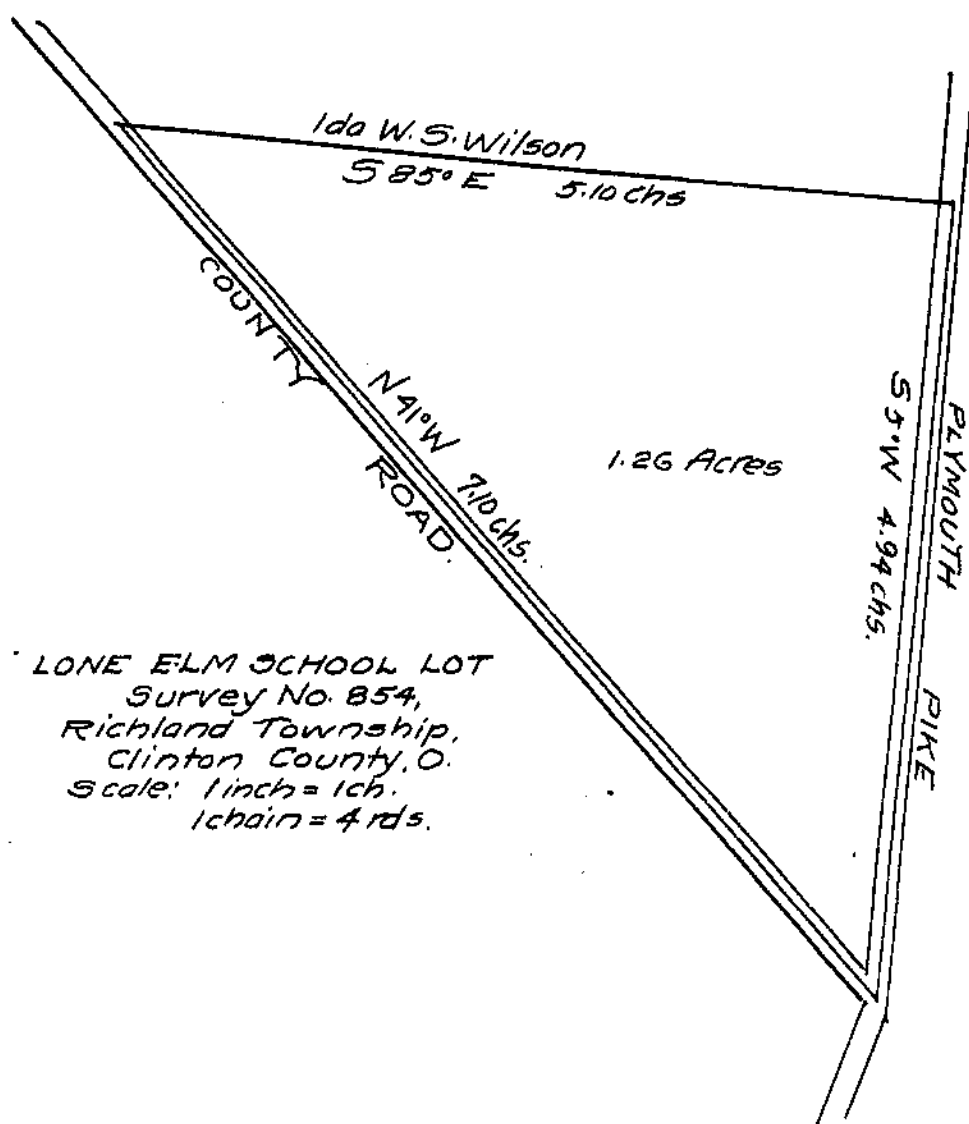
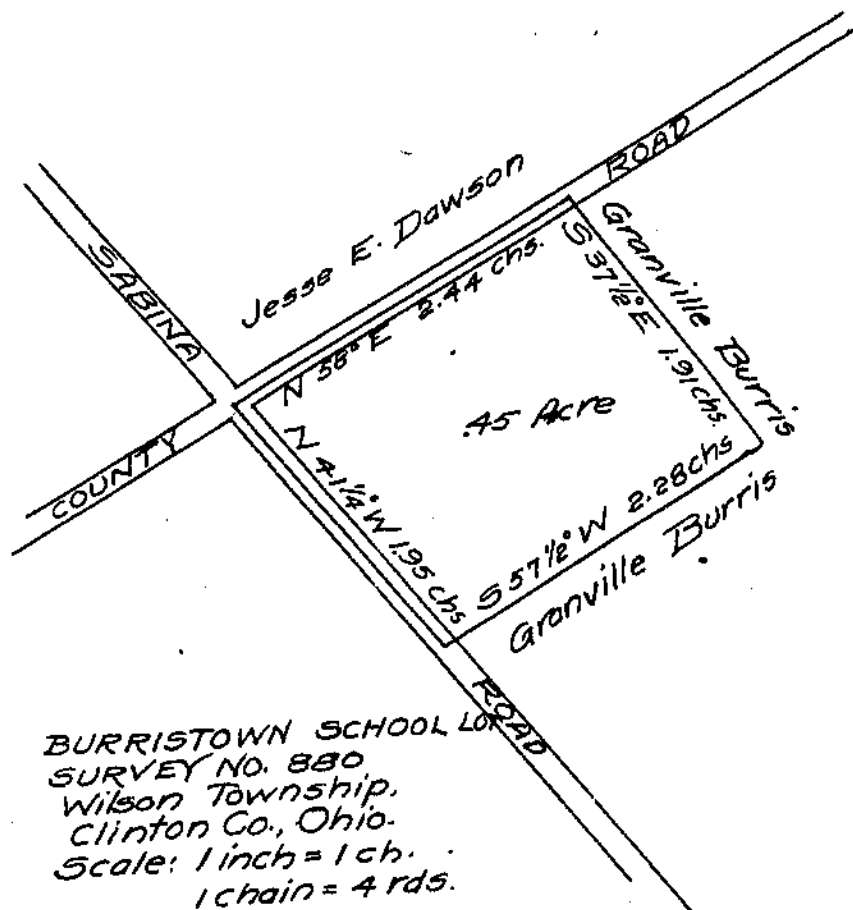


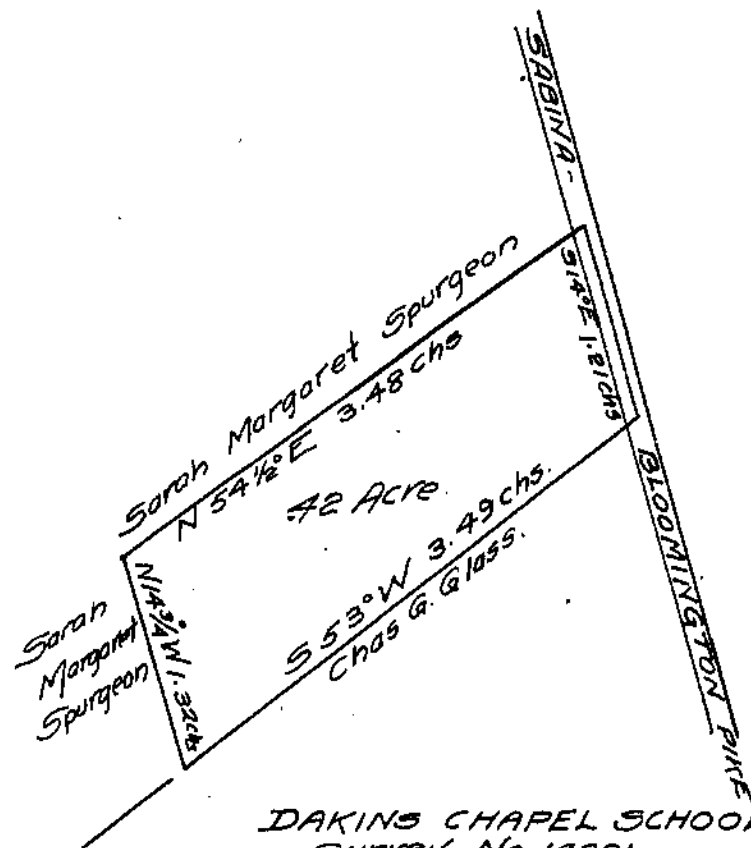
WOODSIDE SCHOOL LOT
Survey No. 841,
Wilson Township,
Clinton Co., Ohio.
Scale: 1 inch = 1 chain
1 chain = 4 rds.



LONE ELM SCHOOL LOT
Survey No. 854,
Richland Township,
Clinton County, O.
Scale: 1 inch = 1 ch.
1 chain = 4 rds.



BURRISTOWN SCHOOL LOT
SURVEY NO. 880
Wilson Township,
Clinton Co., Ohio.
Scale: 1 inch = 1 ch.
1 chain = 4 rds.



DAKINS CHAPEL SCHOOL LOT
Survey No. 14221,
Wilson Township,
Clinton County, O.
Scale: 1 inch = 1 chain
1 ch. = 4 rds.

I hereby certify the above to be correct plats of four surveys
made by me on May 9, 1928

1928