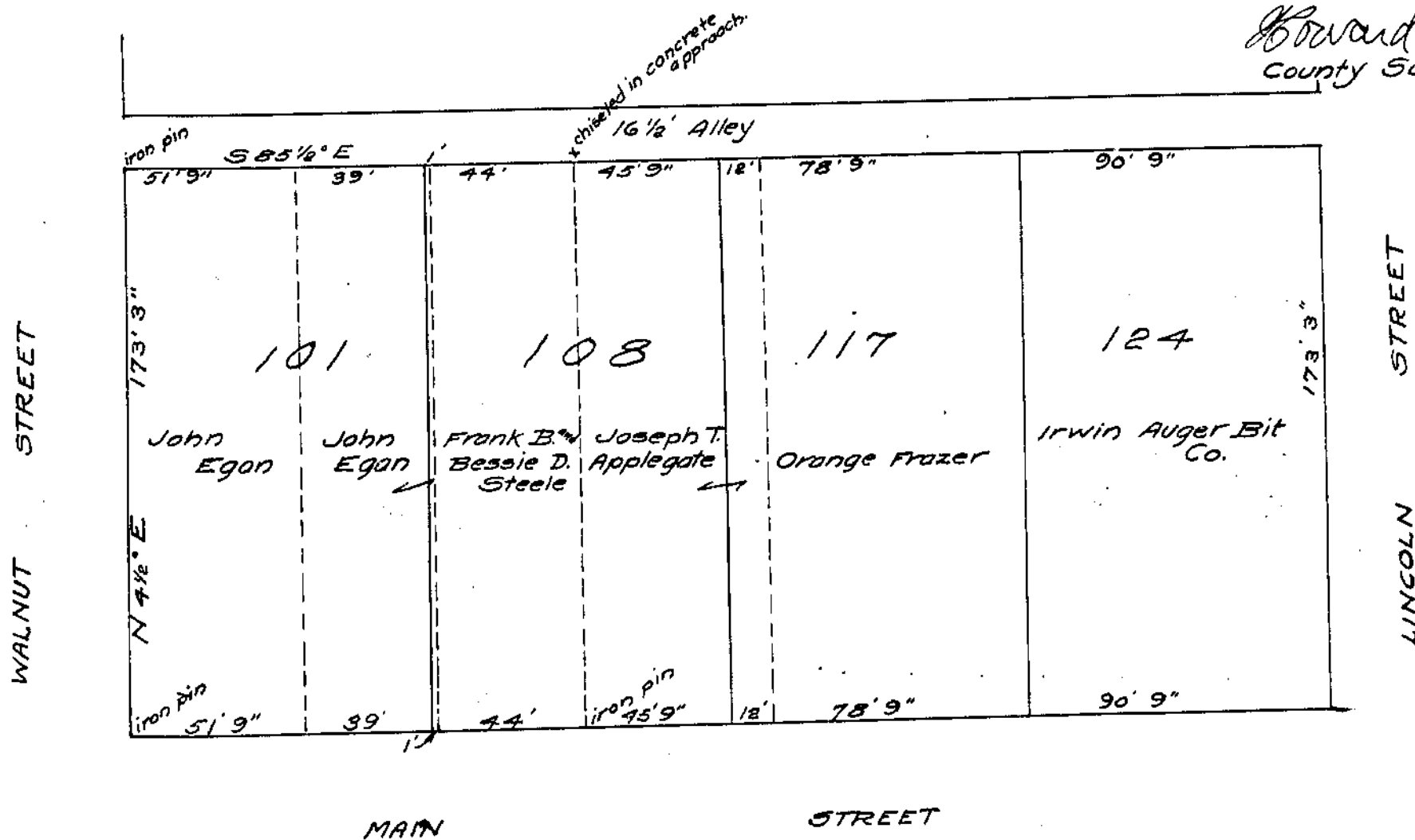


41.71 Acres.

J. FRANK WEST
 Survey No. 2393,
 Clark Township,
 Clinton County,
 Ohio
 Scale: 1 inch = 5 chs = 20 rds.

I hereby certify the above to be a correct plat of a survey made by me on April 19, 1927.

Howard Collett
 County Surveyor



POST OFFICE SITE - LOT NO. 101 AND PART OF 108, Original Plat, Wilmington, Clinton Co., Ohio. 1" = 40'