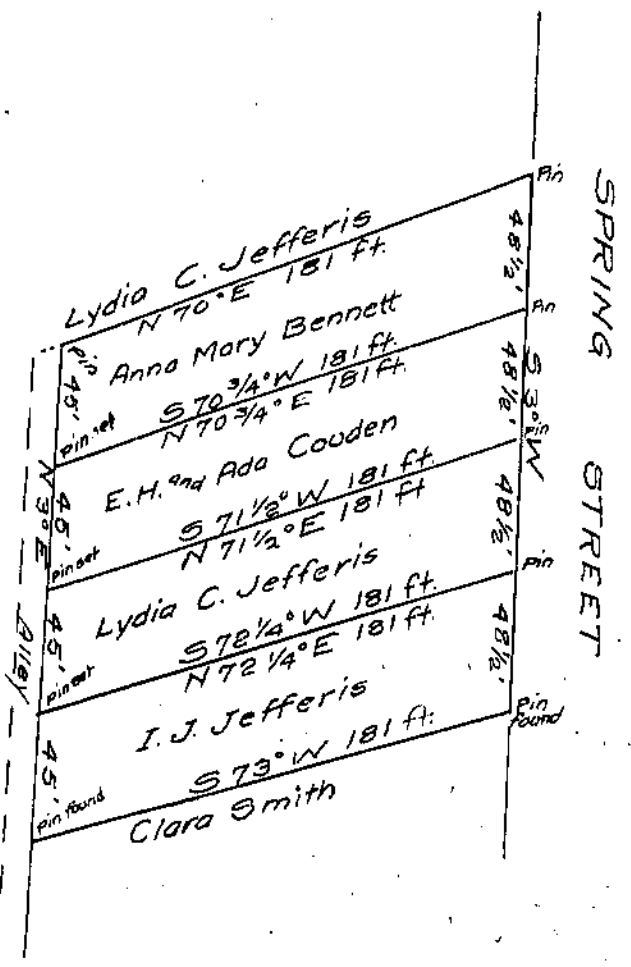


ALBERT SNIDER
 to TREBOR WELTZ 1.29 A.
 JAMES BRAY to TREBOR WELTZ 1.93 A.
 Extension to Wilmington,
 Clinton Co.,
 Ohio.
 Scale: 1 inch = 100 ft.
 M.S. 1927

I hereby certify the above to be a correct plat
 of a survey made by me on Jan. 5, 1926.

Howard Collett
 County Surveyor.



LYDIA C. JEFFERIS LOTS
 Survey No. 1057
 Extension to Wilmington,
 Clinton County, Ohio.
 Scale: 1 inch = 60 ft.

I hereby certify the above to be a correct plat
 of a survey made by me on Oct. 27, 1925.

Howard Collett
 County Surveyor.