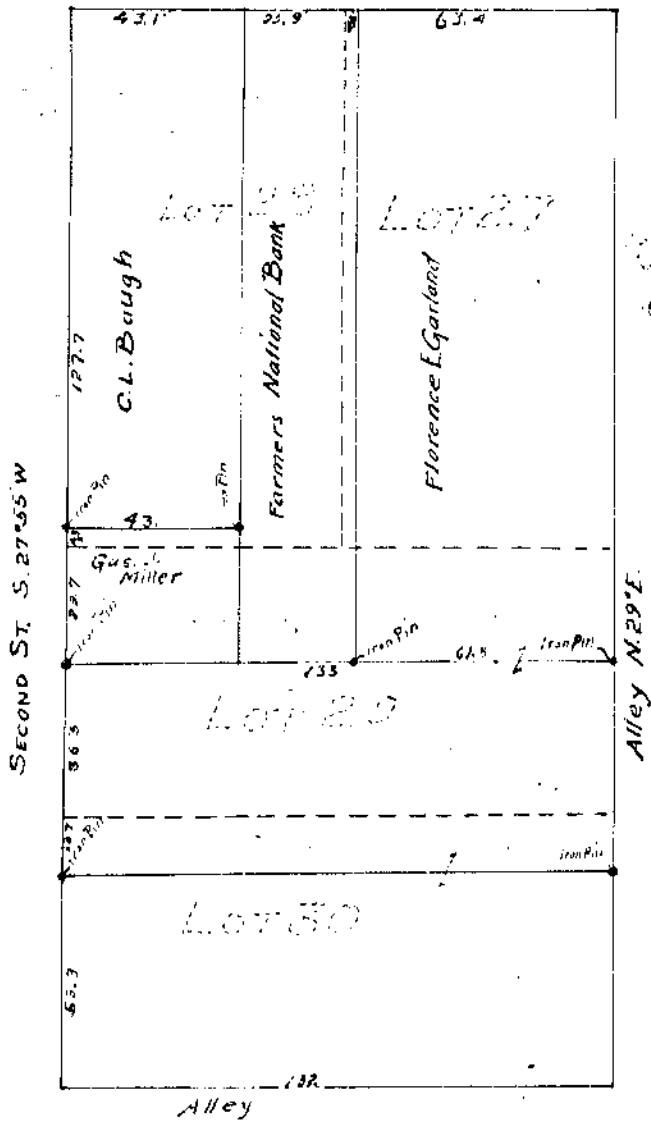


MAIN ST. N. 61° 10' W



Scale 1" = 40'

Original Town  
Corks ville

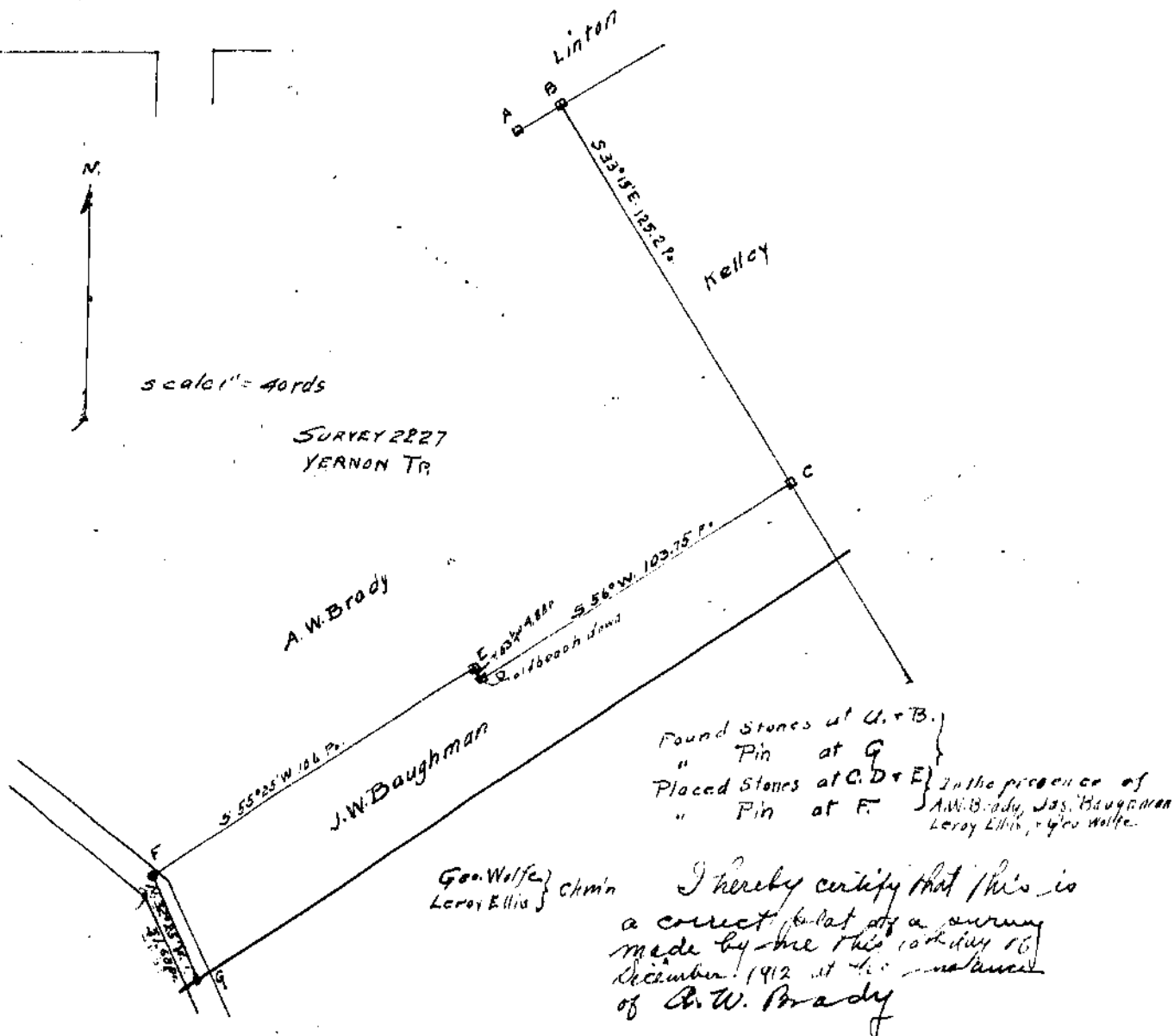
I hereby certify that  
this is a correct plat  
of a survey made by me  
on the 27th day of  
March 1912 at the  
instance of Florence  
E. Garland.

*E. D. Tricker*  
C. S. S.



Scale 1" = 400 ft

SURVEY 2227  
YERNON TR.



Found Stones at A + B.  
" Pin at G.  
Placed Stones at C, D + E.  
" Pin at F. } In the presence of  
A.W. Brady, J.W. Baughman,  
Leroy Ellis, & Geo. Wolfe.

Geo. Wolfe } Chmn  
Leroy Ellis }

I hereby certify that this is  
a correct plat of a survey  
made by me this 10th day of  
December 1912 at the instance  
of A.W. Brady