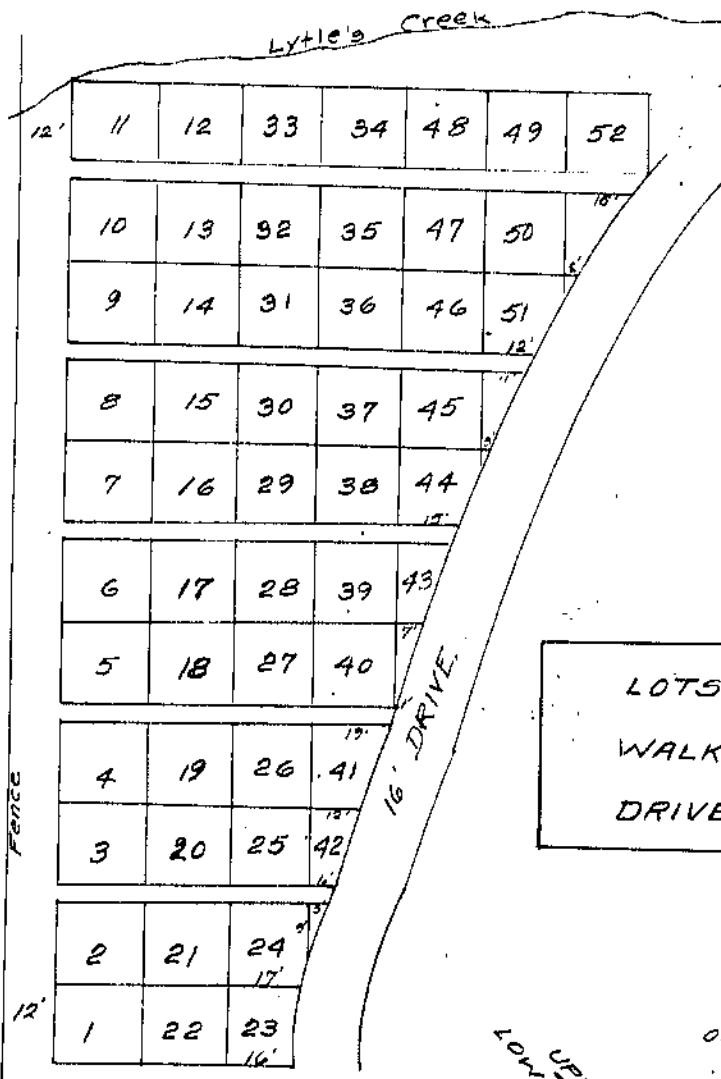


OLD CINCINNATI PIKE

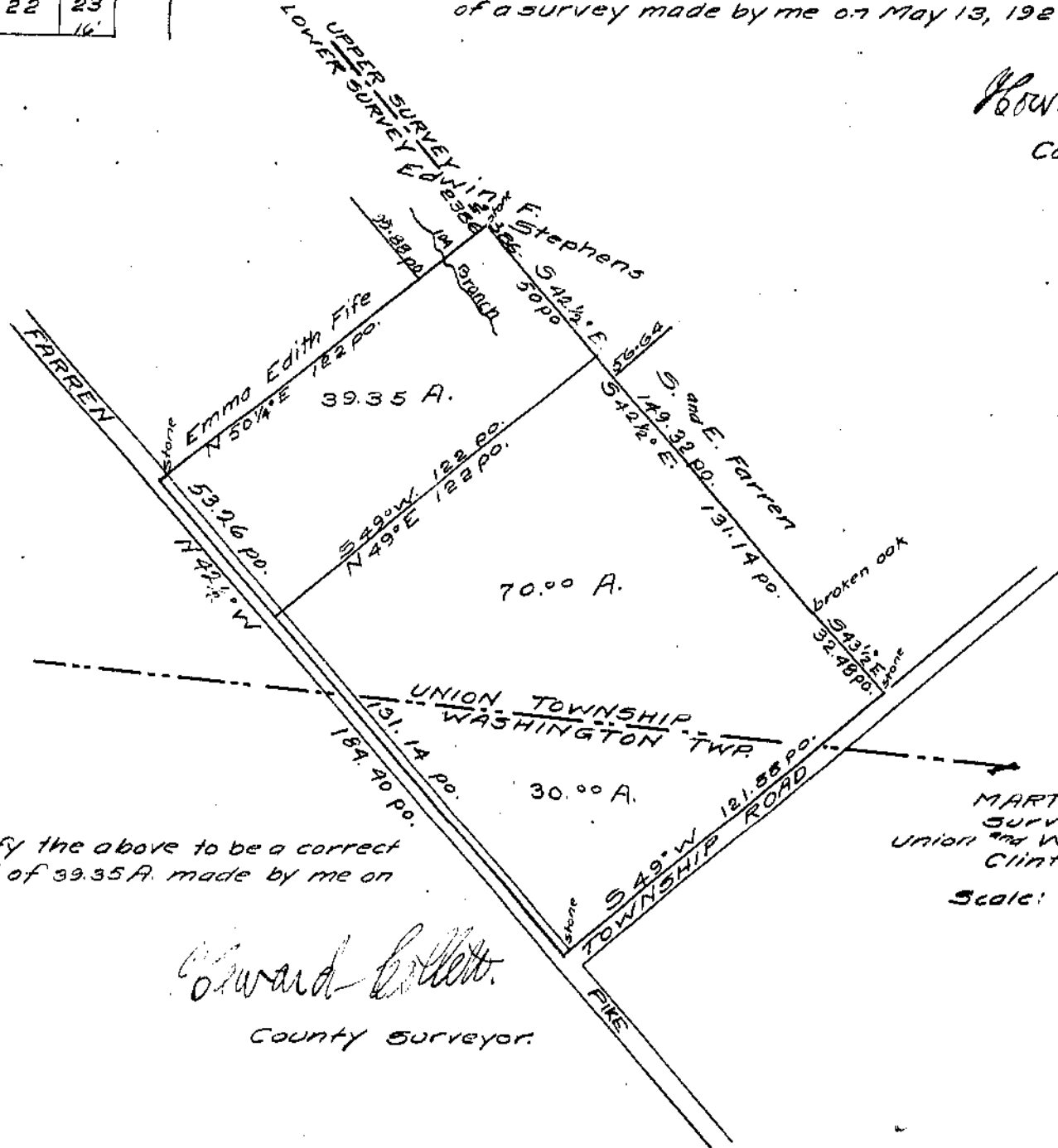


SECTION 9,
SUGARGROVE CEMETERY
Wilmington,
Ohio.
Scale: 1 inch = 40 ft.

LOTS 20' X 20'
WALKS 4' wide
DRIVE 16' wide

I hereby certify the above to be a correct plat
of a survey made by me on May 13, 1925

Howard Collett
County Surveyor.



I hereby certify the above to be a correct
plat of a survey of a tract of 39.35 A. made by me on
May 27, 1925.

Howard Collett
County Surveyor.

MARTHA J. COLE
Survey 2586
Union and Washington Twp.,
Clinton County,
Ohio.
Scale: 1 inch = 40 po.