

ELIJAH M. and JANE ANN WEST
 Survey No. 808,
 Wayne Township,
 Clinton County,
 Ohio.
 Scale: 1 inch = 4 chs.
 1 chain = 4 rds.

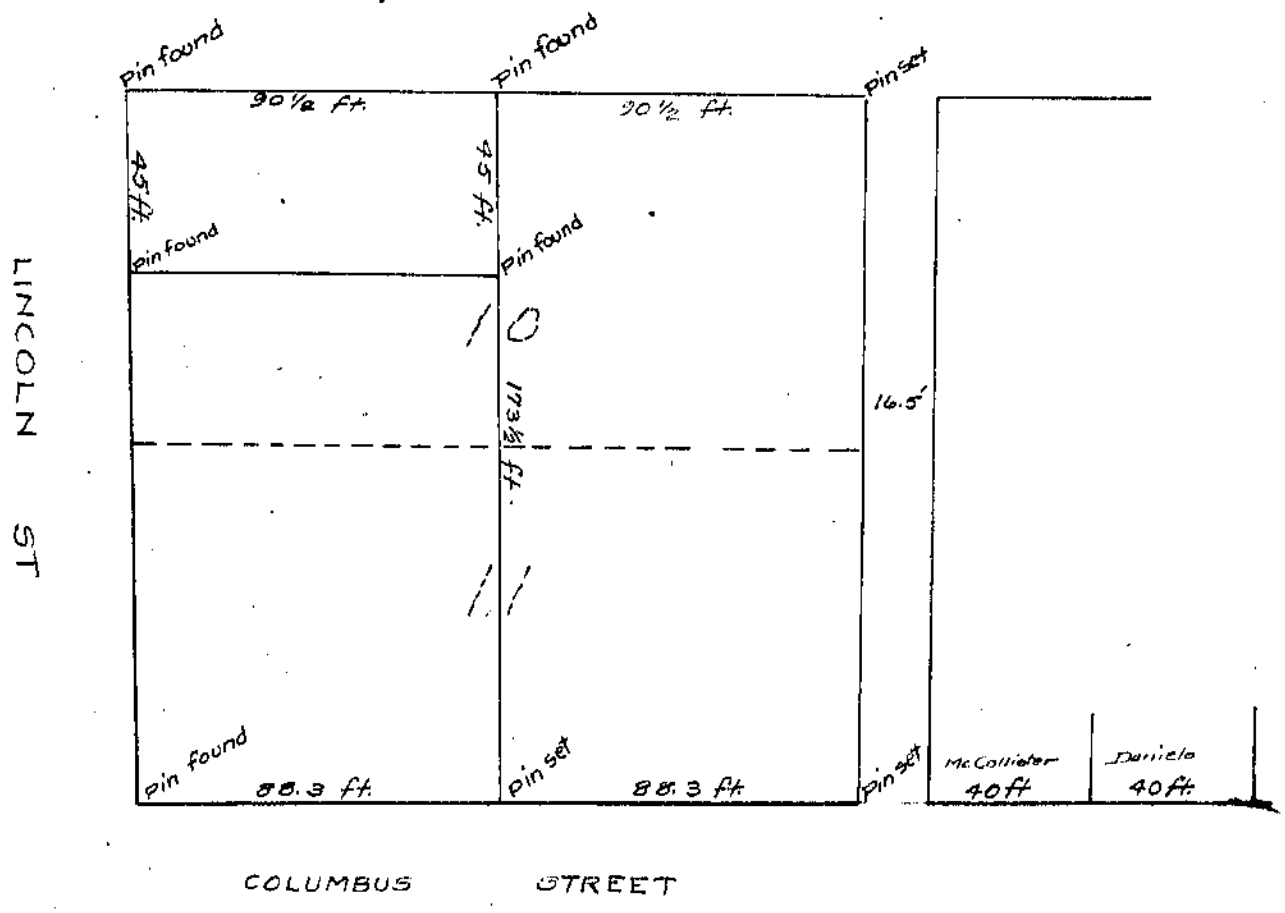
I hereby certify the above to be a correct plot of a survey made by me on Oct. 23, 1924.

Howard Collett
 County Surveyor.

J.S. THOMAS and A.L. RANNELLS
 Faulkners Add.
 Lots 10 and 11
 Wilmington,
 Ohio.

I hereby certify the above to be a correct plot of a survey made by me on Oct. 22, 1924.

Howard Collett



COLUMBUS STREET