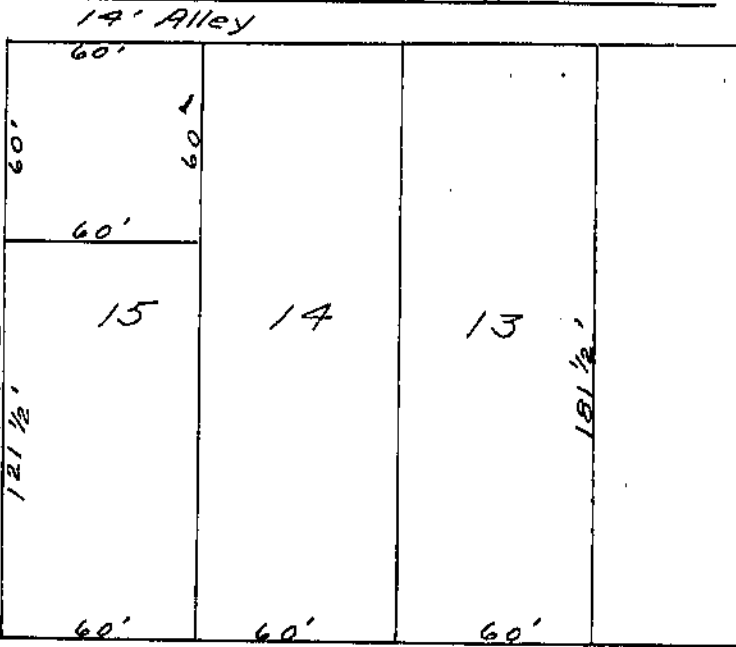
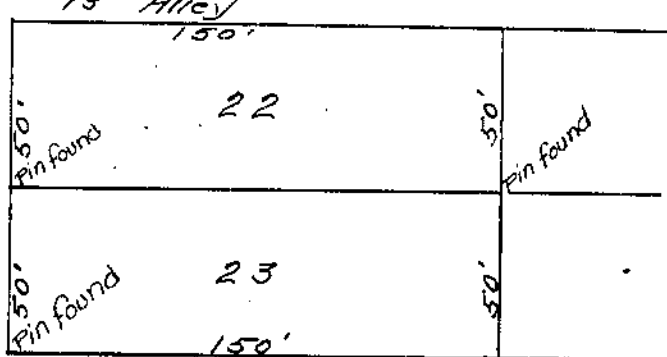
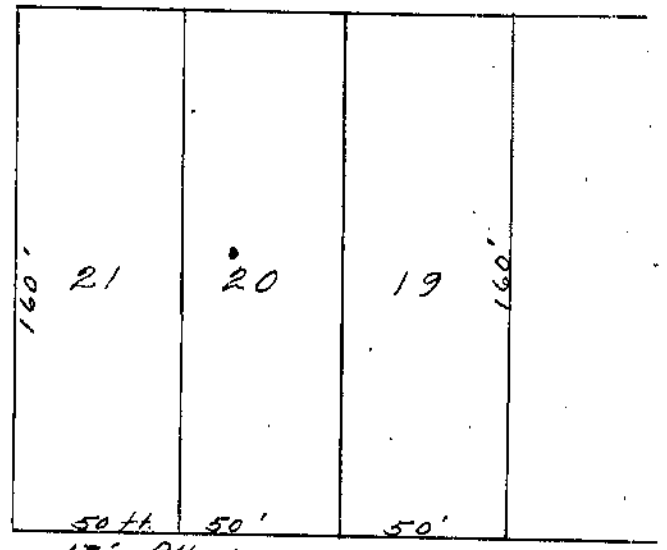


FULTON STREET



VINE STREET

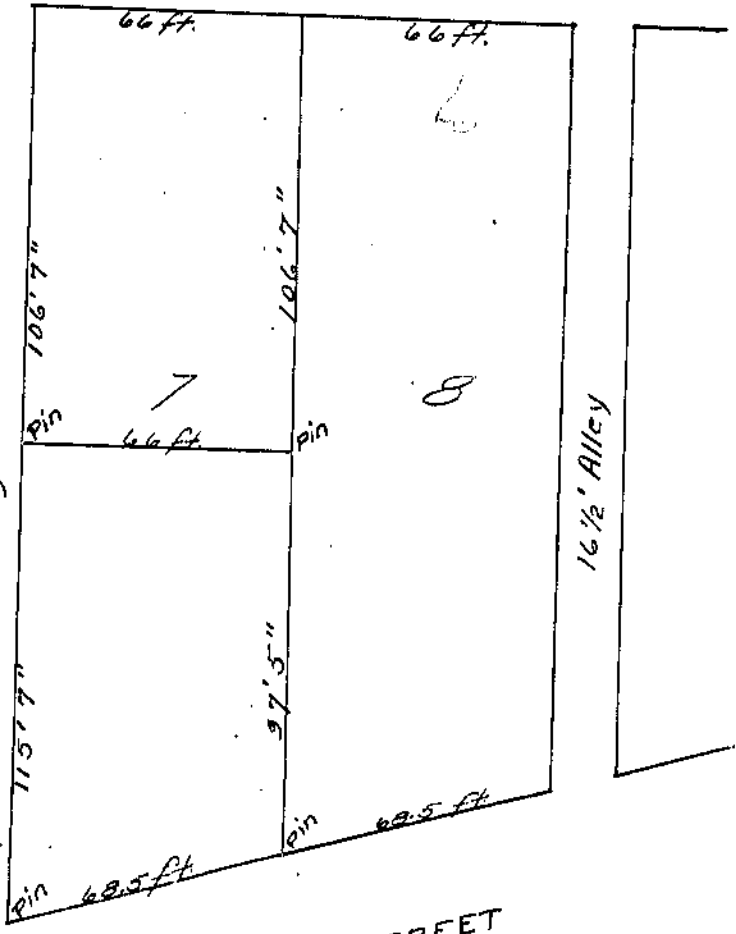
SPRING STREET

HERMAN VANDERVORT
 Part Lot 15,
 Van Cleves Addition
 Wilmington,
 Clinton County,
 Ohio
 Scale: 1 inch = 50 feet

I hereby certify the above to be a correct plat of
 a survey made by me on May 13, 1919.

Howard Collett
 County Surveyor

LOCUST STREET



MAIN STREET

GRANT ST.

JOHN W. CASHMAN
 Part of Lot No. 7,
 Fitzhugh's Addition
 Wilmington,
 Clinton Co.,
 Ohio
 Scale: 1 inch = 40 ft.

I hereby certify the above to be a correct
 plat of a survey made by me on March 8, 1923.

Howard Collett
 County Surveyor