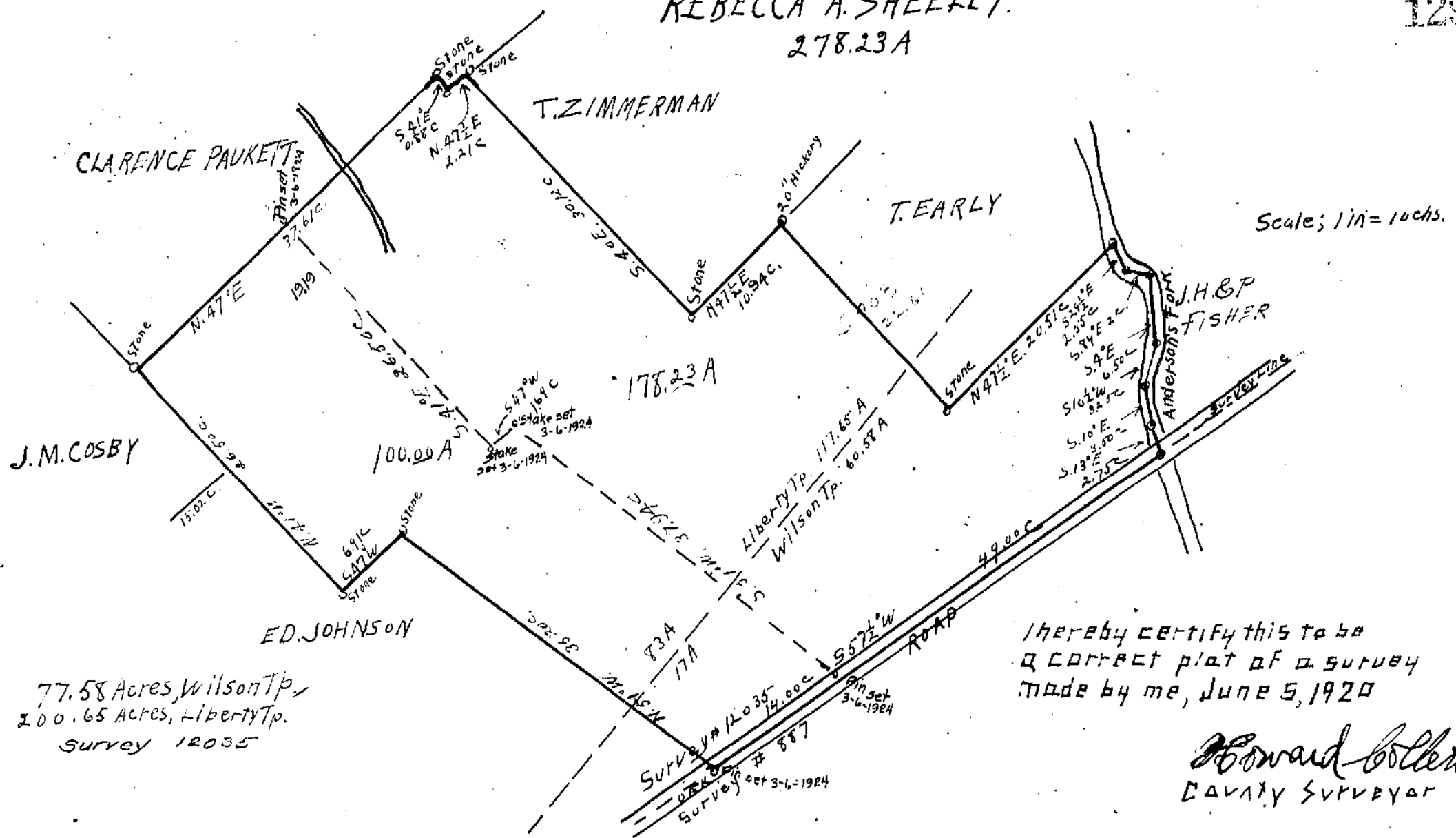
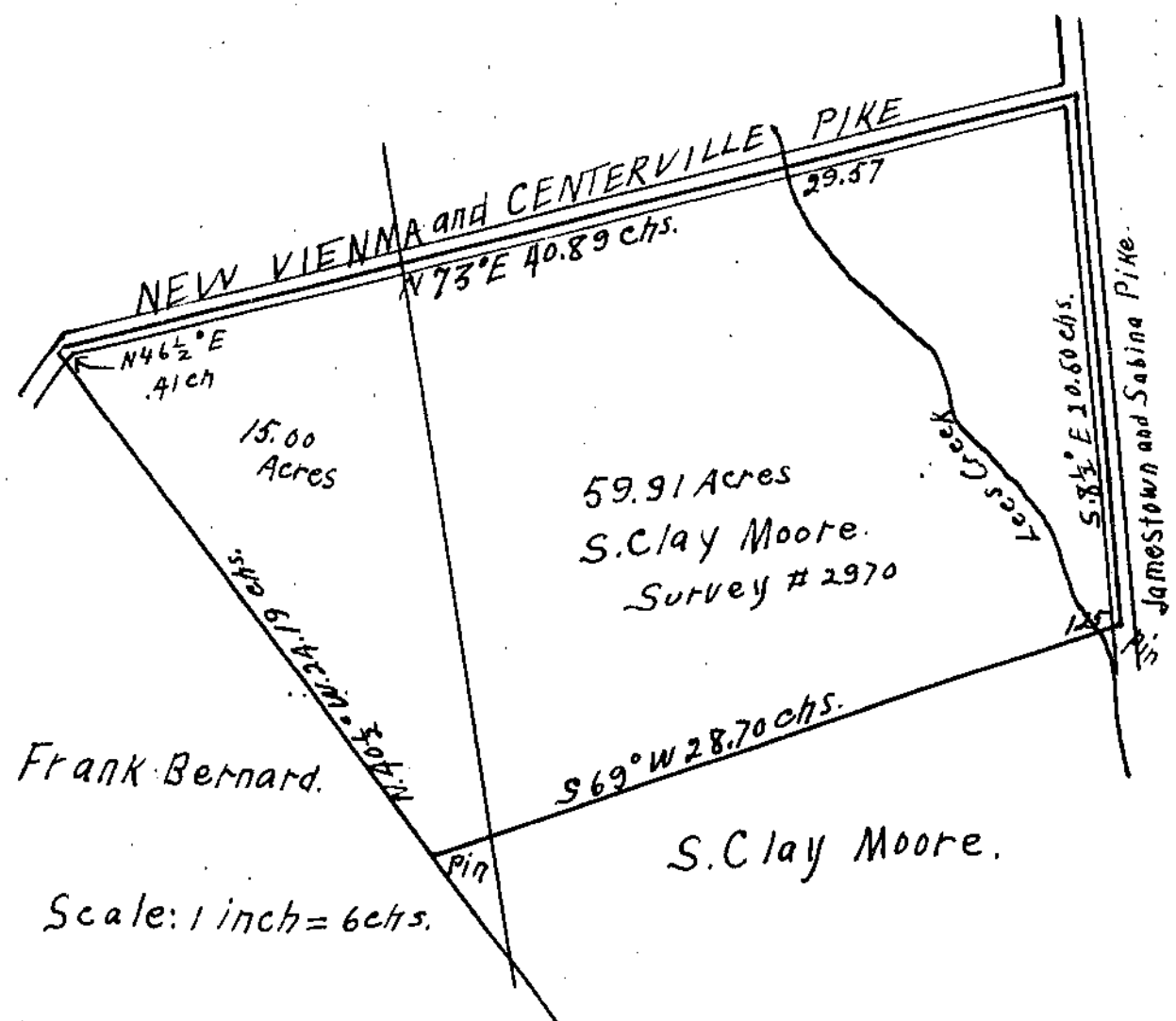


REBECCA A. SHEELEY.  
278.23A



15.00 Acres in Green Tp.  
59.91 Acres in Wayne Tp.  
74.91



I hereby certify the above to be a correct plat of a survey made by me on October 21, 1920.

Howard Collett  
COUNTY SURVEYOR.

Frank Bernard.

Notes in F.B. No A1 P. 00035.