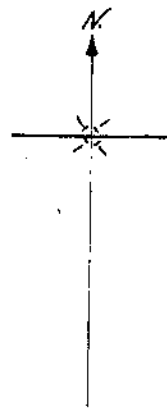


The D. Pickleheimer Estate (part)

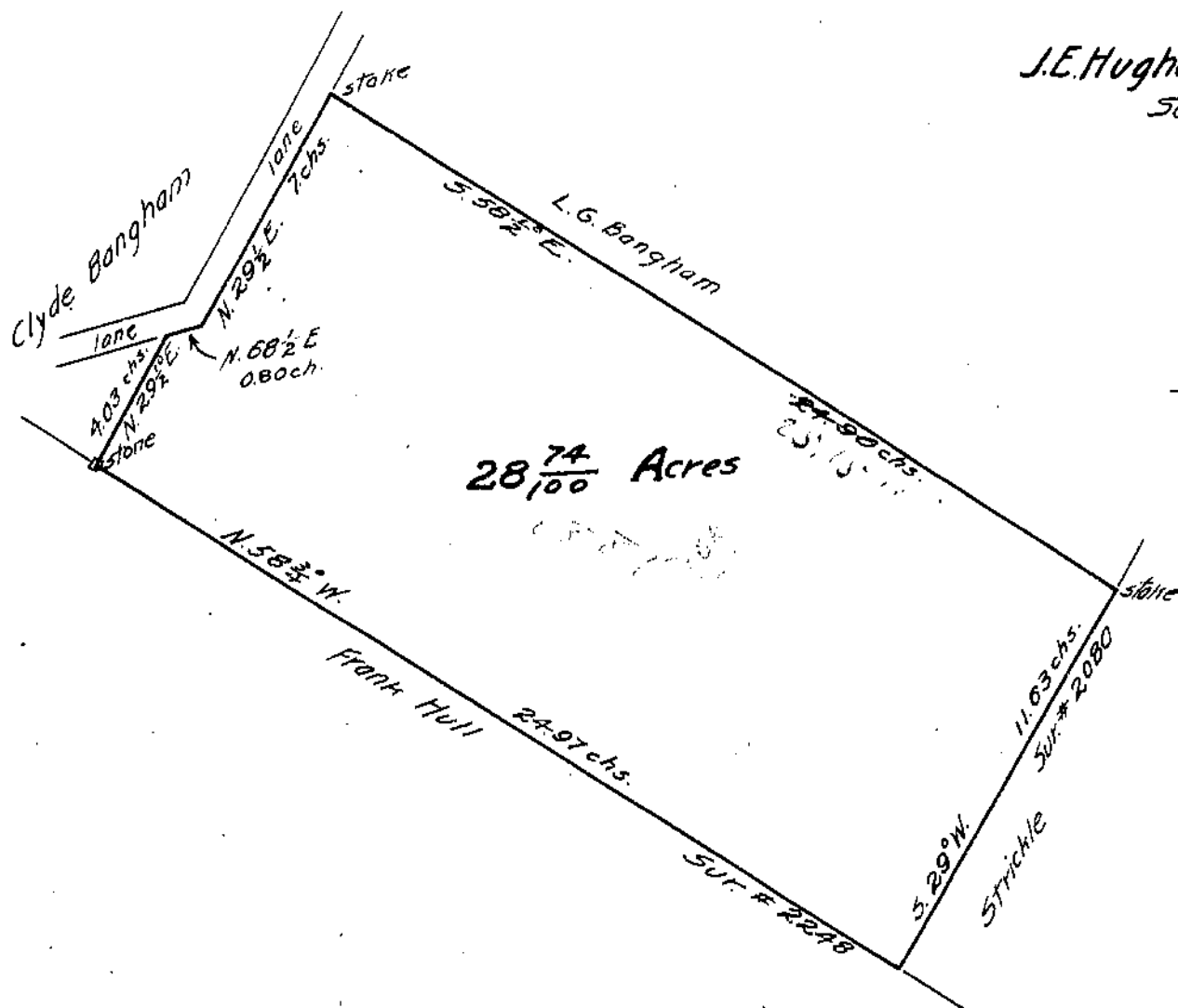
Extension to Blanchester,
Clinton County, Ohio.



I hereby certify this to be
a correct plat of a survey made
by me, August 6, 1919.

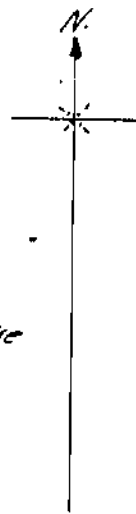
Howard Collett
County Surveyor

Scale; 1 inch = 3 chains
1 chain = 4 rods



J.E. Hughes land for L.G. BANGHAM

Survey No 1733, Liberty Township,
Clinton County, Ohio.



Scale; 1 inch = 4 chains
1 chain = 4 rods

I hereby certify this to be
a correct plat of a survey made
by me, August 14, 1919.

Howard Collett
County Surveyor