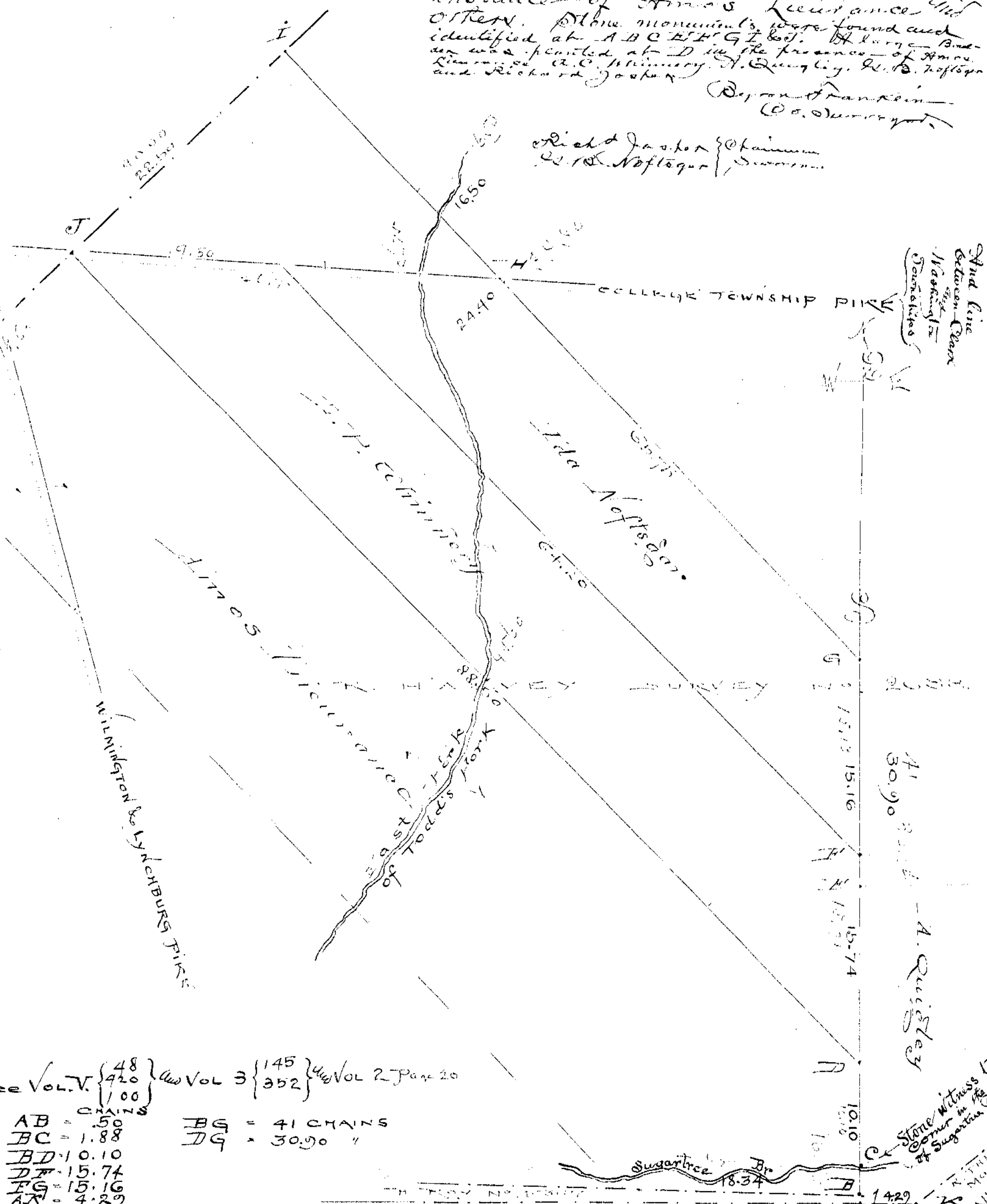


CLARK TWP. SCALE 6 CH. VARIATION 20 E.
SURVEY NO 2388

Surveyed Oct. 10, 1899 at the instance of Amos Licensance and others. Stone monuments were found and identified at A B C E F G I. A large pond was pointed at D in the presence of Amos Licensance, A.C. Munnery, N. Quigley, W.D. Noftsgor and Richard Joster. Byron Franklin Co. Surveyor.

Richard Joster } Chairman
W.D. Noftsgor } Surveyor

And line between Clark and Washington Townships



See Vol. V. { 48 } Vol 3 { 145 } Vol 2 Page 20
 { 420 } { 352 }

- AB = .50 CHAINS
- BC = 1.88
- BD = 10.10
- DE = 15.74
- FG = 15.16
- AK = 4.29
- BG = 41 CHAINS
- DG = 30.90 "

Stone witness to corner in the middle of Sugartree branch

1429