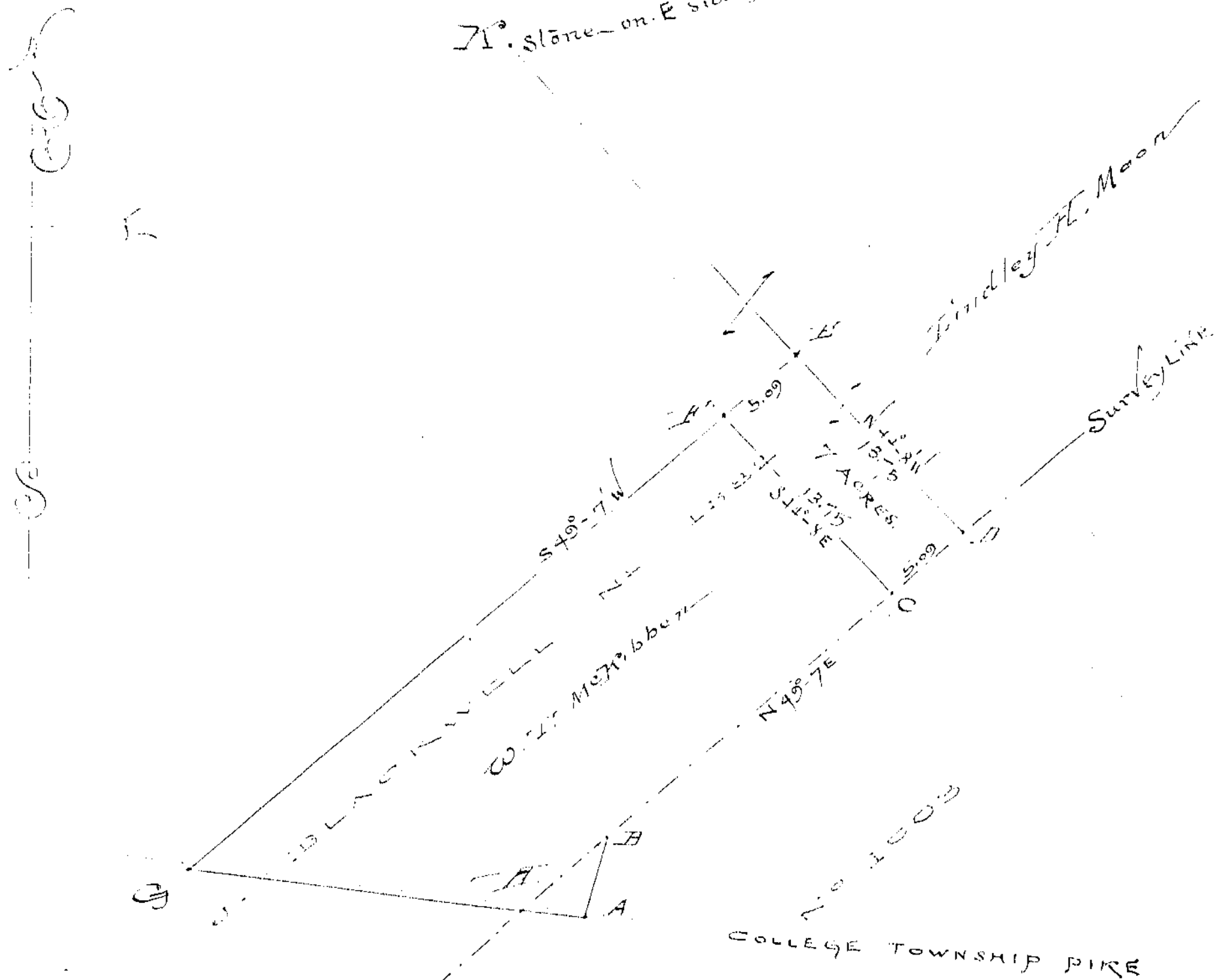


Surveyed Aug 27 1899 at the instance of
 Juddley H. Moon and Wm. J. McKibben
 Witnesses to the planting of the monuments at
 F & C. Wm. McKibben and Juddley H. Moon.



Stone monuments were found at
 A D & E and K. Stone monuments
 were planted at F & C.
 The angle D E K equals 178° 52'.

Byrn Franklin
 County Surveyor