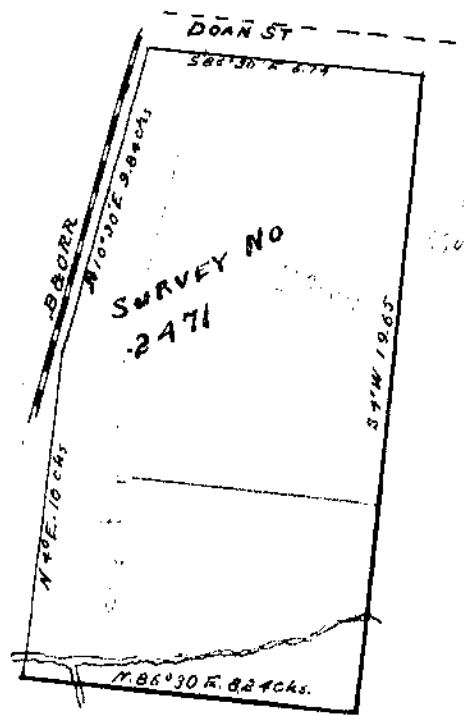


I hereby certify that this is a correct plat of a survey made by me this 14th day of April 1908 at the instance of A. J. Darbyshire.

E. P. Trickey
County Surveyor
Clinton Co.



I hereby certify that this is a correct plat of a survey made by me this 2nd day of May 1908 at the instance of Geo. D. Glass.
Chainmen { Loyal Irwin
 { James Keefe

E. P. Trickey
County Surveyor
Clinton Co.

Scale 1" = 5 chs.