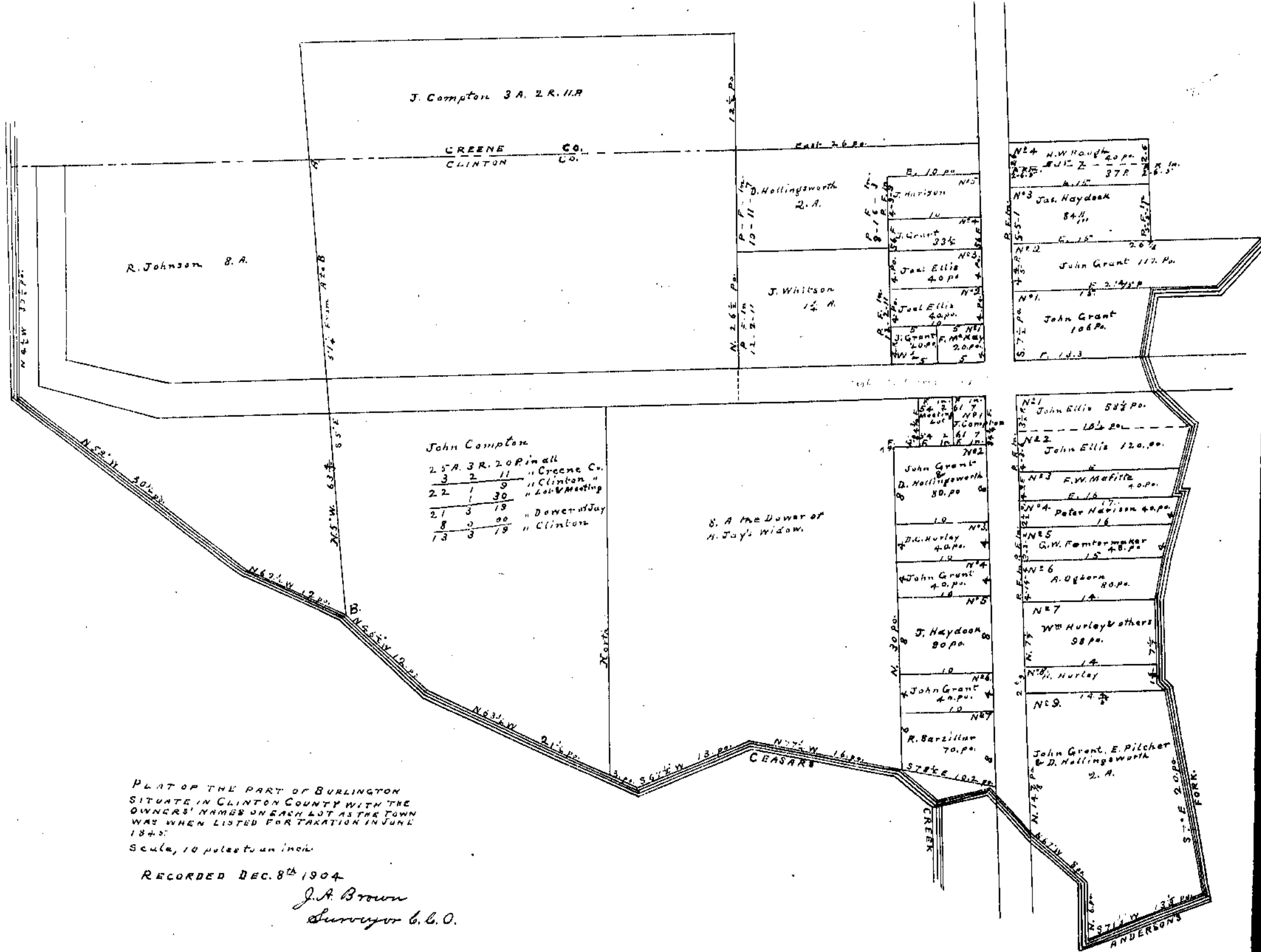


JOHN GRANT'S PLAT.



PLAT OF THE PART OF BURLINGTON  
 SITUATE IN CLINTON COUNTY WITH THE  
 OWNERS' NAMES ON EACH LOT AS THE TOWN  
 WAS WHEN LISTED FOR TAXATION IN JUNE  
 1845:  
 Scale, 10 poles to an inch

RECORDED DEC. 8<sup>th</sup> 1904  
 J. A. Brown  
 Surveyor C. C. O.