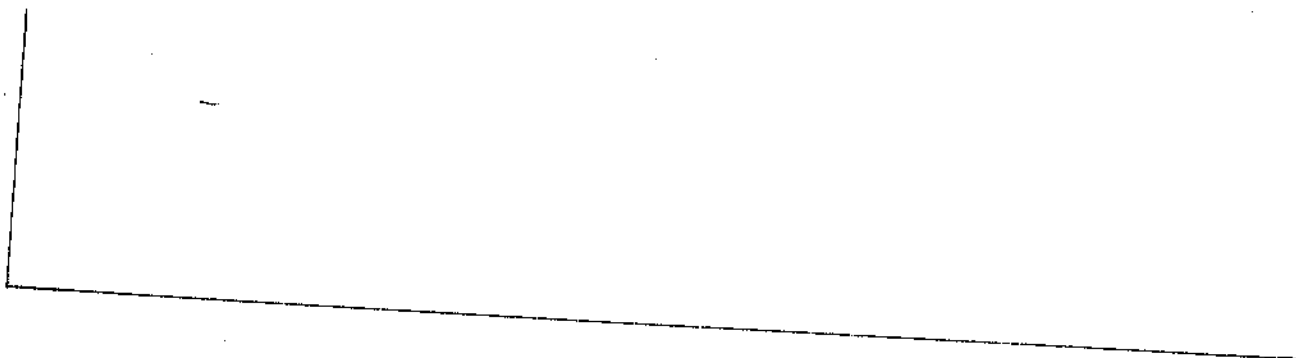




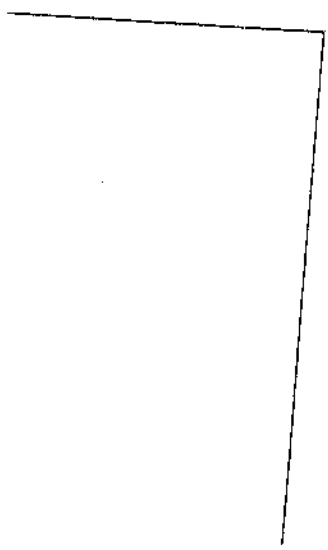
S 7/8 6 1/2



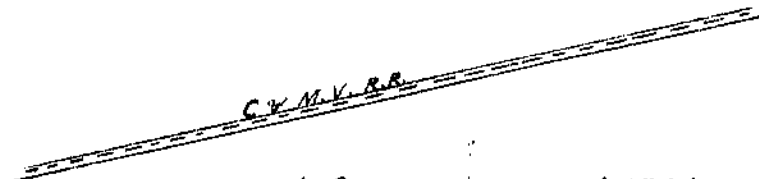
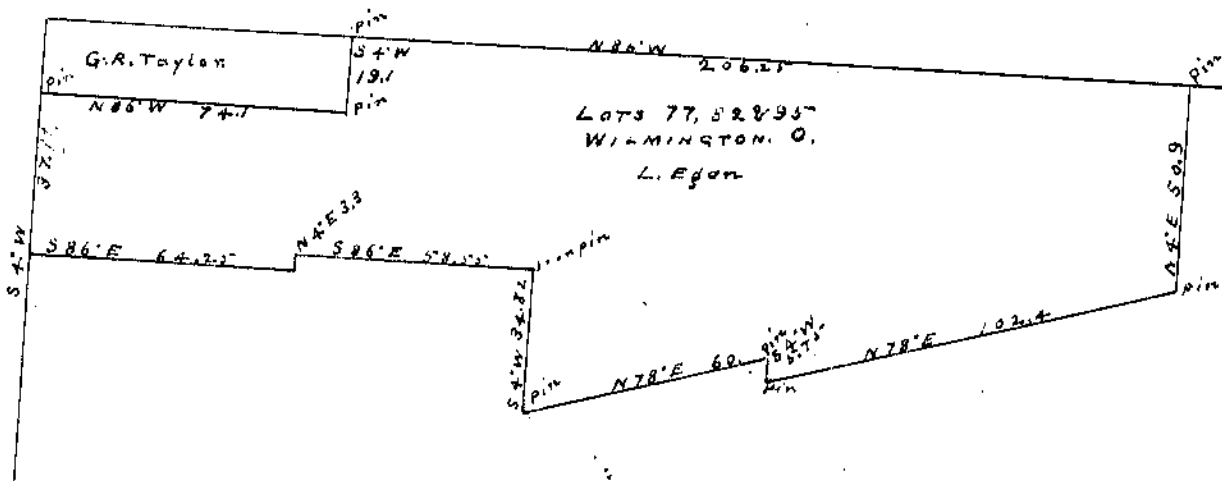
SUGARTREE

ST.

66

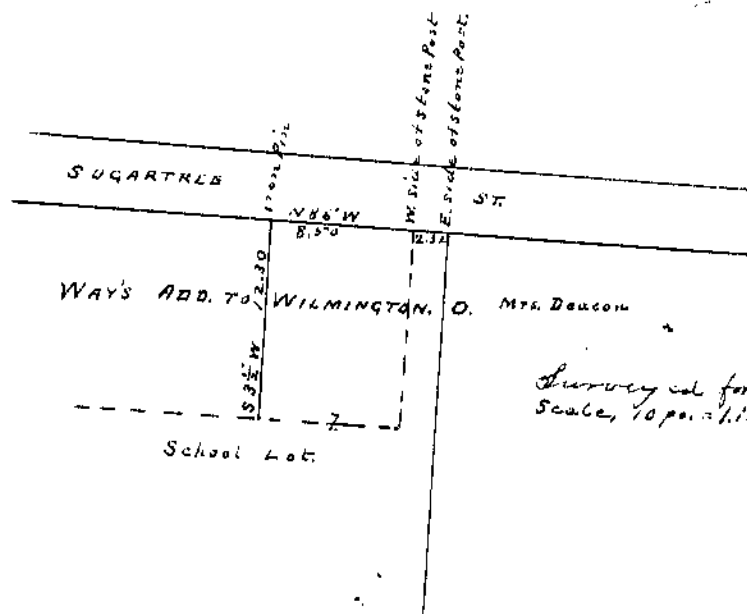


SOUTH



Surveyed for L. Egan July 21<sup>st</sup> 1904  
Scale, 40 ft. = 1 in.

J. A. Brown  
Surveyor C. C. O.



Surveyed for Wilmington Board of Education Aug. 9<sup>th</sup> 1904  
Scale, 10 ft. = 1 in.

J. A. Brown  
Surveyor C. C. O.