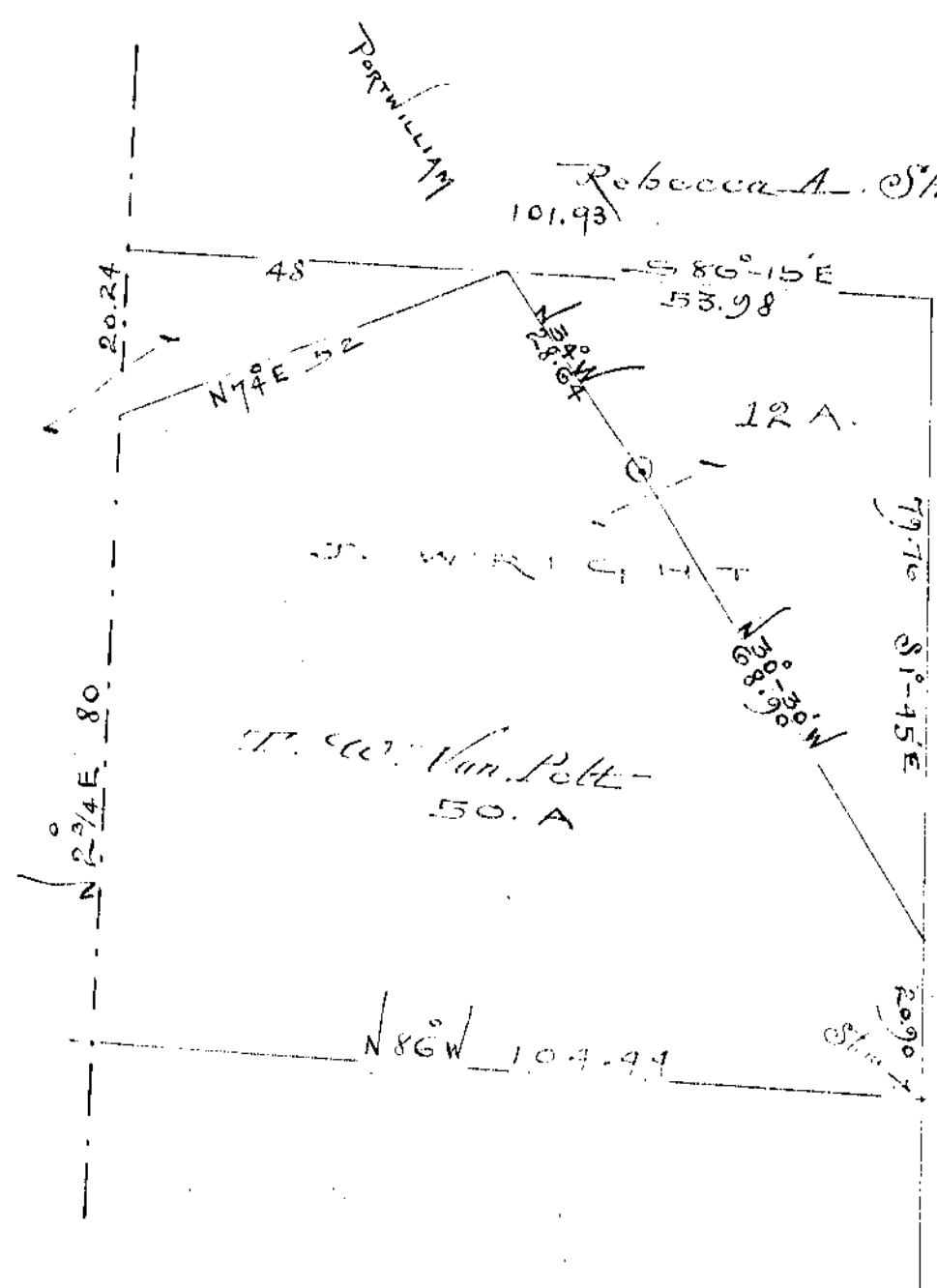


SECTION 17 T23N R23E

A. J. Van Pelt



PORTWILLIAM

Rebecca A. Steeley  
101.93

12 A.

J. WRIGHT

W. W. Van Pelt  
50. A

79.76  
S 1° 45' E

Harold Stephens

AND RESVILLE PIKE

March 29 1899.

Byron Franklin  
County Surveyor