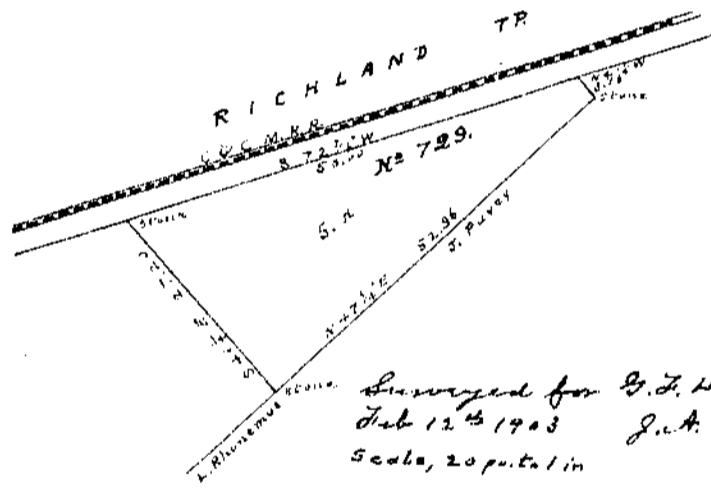


Surveyed for L.J. Lee + G.F. Hill  
 Feb 12<sup>th</sup> 1903  
 Scale, 20 feet to 1 in  
 J. A. Brown  
 Surveyor for Clinton Co., O.



Surveyed for G.F. Hill  
 Feb 12<sup>th</sup> 1903  
 Scale, 20 feet to 1 in  
 J. A. Brown  
 Surveyor for Clinton Co., O.