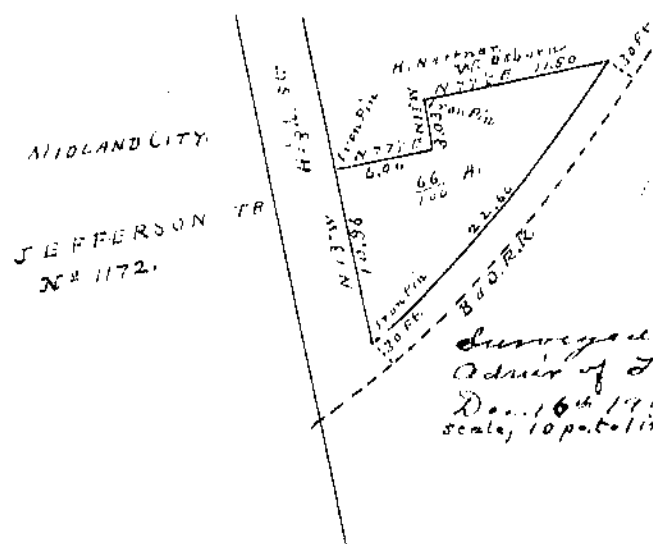


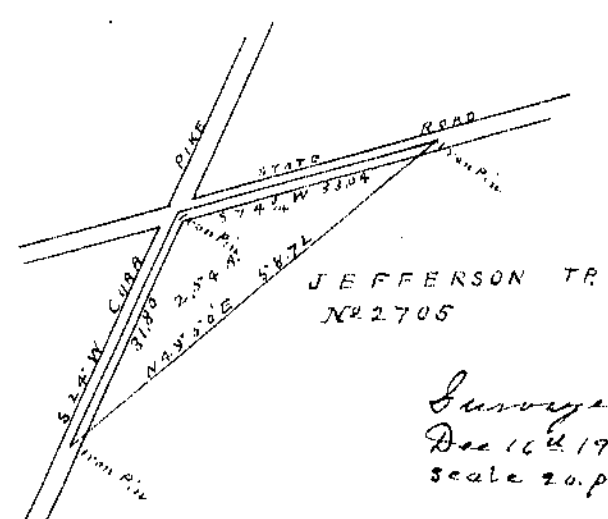
Surveyed for R.E. Mason
 Nov 17.02
 Scale, 20 p. to 1 in.

J. A. Brown
 Surveyor for Clinton Co., O.



Surveyed for L.A. Soblett
 Adm'r of F. S. West's land
 Dec. 16th 1902
 scale, 10 p. to 1 in.

J. A. Brown
 County Surveyor
 Clinton Co., O.



Surveyed for J. J. Sewell
 Dec 16th 1902
 scale 20 p. to 1 in.

J. A. Brown