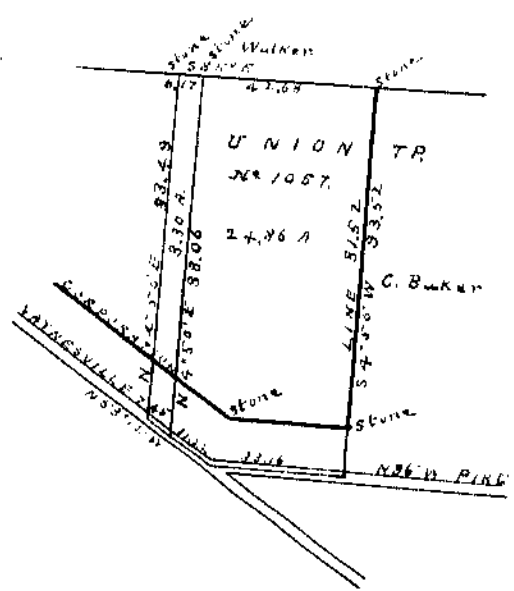


Surveyed for J.A. Hall  
 Oct. 16th 1907  
 Scale, 10 parts to 1 in.

J.A. Brown  
 Surveyor for Clinton Co., N.Y.



Surveyed for J.A. Brown  
 Oct 18th 1902  
 Scale, 40 parts to 1 in.

J.A. Brown  
 Surveyor for Clinton Co., N.Y.